

## MECHANICAL GROUNDING CONNECTORS

More than 60 years of technological innovation has made BURNDY® mechanical grounding connectors one of the most widely used, highly respected lines in the industry. There is virtually no grounding application problem that this diversified line cannot help solve.

All BURNDY mechanical grounding connectors have been designed for easy installation and for outstanding durability. Only the finest high copper alloys are used in their manufacture, ensuring top performance under the most extreme environmental conditions.

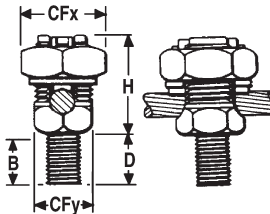
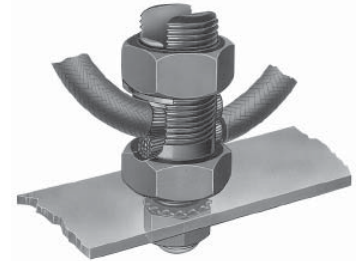
UL467 Listed for direct burial applications in earth or concrete.

### TYPES KC, K2C

#### SERVIT POST™

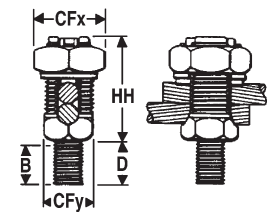
For Copper Cable to Flat

SERVIT POST™ used to ground one or two cables to steel structures, fence posts, transformers. Also used to tap one or two cables from bus bar. One-wrench installation.



Type KC

Type K2C



TYPE KC ①	TYPE K2C ②	Stranded	Solid	Stud Diameter	B	CFx	CFy	D	H	HH
KC15	K2C15	12 [4mm²]-9 [6mm²]	12 [4mm²]-8 [10mm²]	1/4 -20	3/8 [9.5]	1/2 [12.7]	3/8 [9.5]	1/2 [12.7]	5/8 [15.9]	7/8 [22.2]
KC15B1	K2C15B1				7/8 [22.2]	1/2 [12.7]	3/8 [9.5]	1 [25.4]		
KC17	K2C17	10 [6mm²]-7 [10mm²]	10 [6mm²]-6 [16mm²]	1/4 -20	3/8 [9.5]	5/8 [15.9]	7/16 [11.1]	1/2 [12.7]	7/8 [22.2]	1 [25.4]
KC17B1	K2C17B1				7/8 [22.2]	5/8 [15.9]	7/16 [11.1]	1 [25.4]		
KC20	K2C20	10 [6mm²]-5 [16mm²]	10 [6mm²]-4 [25mm²]	5/16 -18	13/32 [10.3]	11/16 [17.5]	1/2 [12.7]	5/8 [15.9]	7/8 [22.2]	1-1/8 [28.6]
KC20B1	K2C20B1				27/32 [21.4]	11/16 [17.5]	1/2 [12.7]	1 [25.4]		
KC22	K2C22	10 [6mm²]-3 [25mm²]	10 [6mm²]-2 [35mm²]	3/8 - 16	15/32 [11.9]	3/4 [19.0]	5/8 [15.9]	5/8 [15.9]	1 [25.4]	1-1/4 [31.8]
KC22B1	K2C22B1				31/32 [24.6]	3/4 [19.0]	5/8 [15.9]	1-1/8 [28.6]		
KC23	K2C23	8 [10mm²]-2 [35mm²]	10 [6mm²]-1 [35mm²]	3/8 - 16	15/32 [11.9]	13/16 [20.6]	5/8 [15.9]	5/8 [15.9]	1 [25.4]	1-3/8 [34.9]
KC23B1	K2C23B1				31/32 [24.6]	13/16 [20.6]	5/8 [15.9]	1-1/8 [28.6]		
KC25	K2C25	2 [35mm²]-1/0 [50mm²]	2 [35mm²]-2/0 [70mm²]	1/2 -13	9/16 [14.3]	15/16 [23.8]	3/4 [19.0]	3/4 [19.0]	1-1/8 [28.6]	1-5/8 [41.3]
KC25B1	K2C25B1				1-1/16 [27]	15/16 [23.8]	3/4 [19.0]	1-1/4 [31.8]		
KC26	K2C26	2 [35mm²]-2/0 [70mm²]	2 [35mm²]-3/0 [70mm²]	1/2 -13	17/32 [13.5]	1 [25.4]	7/8 [22.2]	3/4 [19.0]	1-3/8 [34.9]	1-7/8 [22.2]
KC26B1	K2C26B1				1-1/16 [27]	1 [25.4]	7/8 [22.2]	1-1/4 [31.8]		
KC28	K2C28	1 [35mm²]-4/0 [95mm²]	1 [35mm²]-4/0 [95mm²]	5/8 - 11	3/4 [19.0]	1-1/2 [38.1]	1-3/16 [30.2]	1 [25.4]	1-3/4 [44.5]	2-1/4 [57.2]
KC28B1	K2C28B1			1-1/4 [31.8]	1-1/2 [38.1]	1-3/16 [30.2]	1-1/2 [38.1]			
—	K2C28G3			1/2-13	1-1/4 [31.8]	1-1/2 [38.1]	1-3/16 [30.2]	1-1/2 [38.1]		
KC31	K2C31	1 [35mm²]-350 [185mm²]	-	5/8 - 11	3/4 [19.0]	1-11/16 [42.9]	1-3/8 [34.9]	1 [25.4]	2-1/4 [57.2]	2-7/8 [73.0]
KC31B1	K2C31B1				1-1/4 [31.8]	1-11/16 [42.9]	1-3/8 [34.9]	1-1/2 [38.1]		
KC34	K2C34	3/0 [70mm²]-500 [240mm²]	-	3/4 -10	1 [25.4]	2 [50.8]	1-5/8 [41.3]	1-1/4 [31.8]	2-3/8 [60.3]	3-1/4 [82.6]
KC34B1	K2C34B1				1-1/2 [38.1]	2 [50.8]	1-5/8 [41.3]	1-3/4 [38.1]		

① For 1 conductor  
 ② For 1 or 2 conductors

**NOTES:**  
 Add "-NSP" suffix to catalog numbers to have connector supplied with split lockwasher and nut

Equivalent Metric Size given in [ ]; Metric sizes provided for reference only.

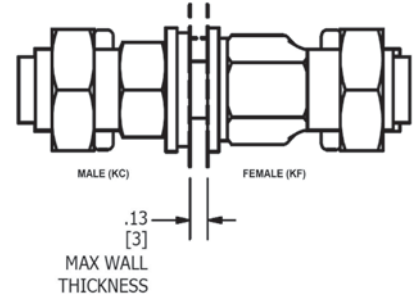
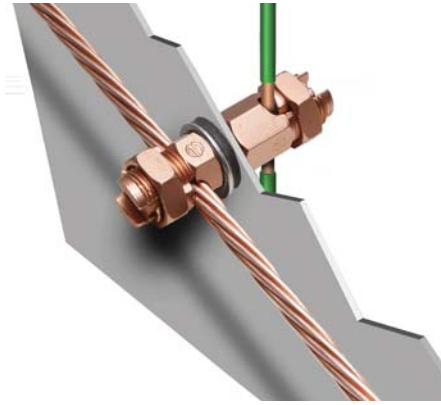
## TYPE KCKF

### Bulkhead Ground Connector

The “Bulkhead” connector is designed to allow a ground wire to be connected from the inside of a box or enclosure to the outside of a box or enclosure.

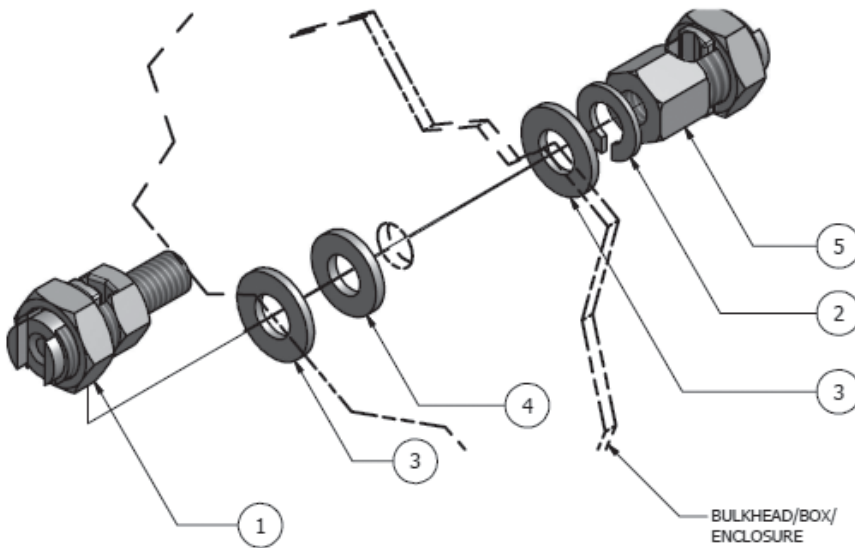
This new connector is supplied in kit form with a male SERVIT POST™, female SERVIT®, (2) stainless steel washers, split lock washer and sealing washer.

The available “Application Guideline” document helps describe the application with visuals and installation examples.



### Features & Benefits

- Provides an easy way to connect ground wires “through” an enclosure wall
- Includes Male SERVIT POST™, Female SERVIT®, (2) Stainless Steel Washers, Split Lock Washer, Sealing Washer
- Split Lock Washer allows adjustment of conductor orientation
- Made of Silicon Bronze material (connectors) and Stainless Steel Hardware, Sealing Washer
- Meets NEMA 4X requirements when installed correctly
- Application Guideline document available
- Industry proven split bolt/SERVIT POST™ technology



	Qty	Description
1	1	Male SERVIT POST™
2	1	Stainless Steel Split Lock Washer*
3	2	Stainless Steel Flat Washer*
4	1	Sealing Washer*
5	1	Female SERVIT®

\*One flat washer and sealing washer to be installed on outside of box or, where applicable, to side of wall exposed to atmospheric or contaminated conditions. Remaining hardware to be mounted to opposite side of the wall as shown.

Catalog Number	ACCOMMODATES			NUT TORQUE IN-LBS [N-M]	MAX. THRU HOLE
	AWG		METRIC		
	STRANDED	SOLID	STRANDED		
KCKF23	#8 (.146) - #2 (.292)	#10 (.102) - #1 (.289)	10mm <sup>2</sup> (4.1) - 35mm <sup>2</sup> (6.5)	275 [31.1]	7/16
KCKF25	#2 (.292) - 1/0 (.373)	#2 (.258) - 2/0 (.365)	35mm <sup>2</sup> (6.5) - 50mm <sup>2</sup> (9.3)	385 [43.5]	9/16
KCKF28	#1 (.332) - 4/0 (.528)	#1 (.289) - 4/0 (.460)	50mm <sup>2</sup> (9.3) - 95mm <sup>2</sup> (12.8)	500 [56.5]	11/16

**Notes:**

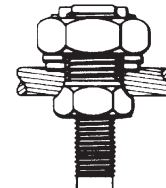
- Dimensions in ( ) are cable diameters.
- Diameters of AWG wires are in inches.
- Diameters for metric wires are given in mm.

**TYPES KC22J12T13, EQC632C**

**Transformer Ground Connectors**

For Copper

Fits all standard EEI NEMA distribution transformers as tank grounding terminal.



Type KC22B2  
1/2-13  
stud size

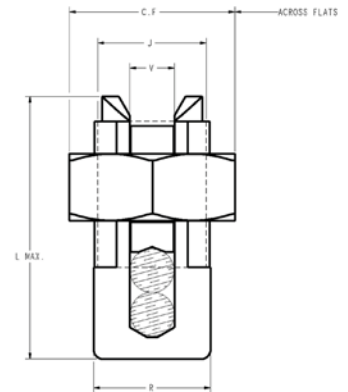
Catalog Number	Ranges
KC22J12T13	8 Sol. [10 mm <sup>2</sup> ]- 2 Sol. [35 mm <sup>2</sup> ]
KC26	2 Sol. [35 mm <sup>2</sup> ] - 2/0 Str. [70 mm <sup>2</sup> ]
KC34J12T13	3/0 [70 mm <sup>2</sup> ]- 500 Str. [240 mm <sup>2</sup> ]
EQC632C	8 Sol. [10mm <sup>2</sup> ] - 2 Str. [35mm <sup>2</sup> ]

**TYPE KS**

**SERVIT®**

For Copper, Copperweld

Compact, high strength, high copper alloy SERVIT® split-bolt has free-running threads and easy to grip wrench flats. Highly resistant to season cracking and corrosion, the SERVIT® provides maximum pressure and assures a secure connection on all combinations of run and tap conductors.



Catalog Number	Cross Flats	L	W	Conductor						Rebar with (1) #8 Sol. Cu	Recommended Tightening Torque (in-lb)
				Copper		Copperweld®					
				Equal Run & Tap	Min Tap with Max Run	Maximum Run and Tap		Sol.	Str.		
KS15	0.5 [12.7]	0.85 [21.6]	0.38 [9.7]	10 Str. [6 mm <sup>2</sup> ]- 8 Str. [10 mm <sup>2</sup> ]	14 Str.	#8	—	—	—	—	80
KS17	0.63 [16]	1.14 [29]	0.45 [11.4]	8 Str. [10 mm <sup>2</sup> ] - 6 Sol. [16 mm <sup>2</sup> ]	14 Str.	#6	3 #12	8A	9-1/2D	—	165
KS20	0.69 [17.5]	1.2 [30.5]	0.51 [13]	8 Str. [10 mm <sup>2</sup> ] - 4 Sol. [25 mm <sup>2</sup> ]	14 Str.	#4	3 #10	6A	8D	—	165
KS22	0.75 [19.1]	1.5 [38.1]	0.6 [15.2]	6 Str. [16 mm <sup>2</sup> ] - 2 Sol. [35 mm <sup>2</sup> ]	14 Str.	#2	3 #8	4A	6D	—	275
KS23	0.82 [20.8]	1.54 [39.1]	0.62 [15.7]	6 Str. [16 mm <sup>2</sup> ] - 2 Str. [35 mm <sup>2</sup> ]	14 Str.	#1	3 #7	3A	5D	—	275
KS25	0.94 [23.9]	1.77 [45]	0.73 [18.5]	4 Str. [25 mm <sup>2</sup> ] - 1/0 Str. [50 mm <sup>2</sup> ]	14 Str.	2/0	3 #5	2A	4D	—	385
KS26	1.05 [26.7]	1.94 [49.3]	0.82 [20.8]	2 Str. [35 mm <sup>2</sup> ] - 2/0 Str. [70 mm <sup>2</sup> ]	14 Str.	3/0	7 #7	—	—	#3 (3/8")	385
KS27	1.36 [34.5]	1.86 [47.2]	1.17 [29.7]	1 Str. [35 mm <sup>2</sup> ] - 3/0 Str. [70 mm <sup>2</sup> ]	8 Sol.	—	—	—	—	—	500
KS29	1.36 [34.5]	2.07 [52.6]	1.17 [29.7]	1 Str. [35 mm <sup>2</sup> ] - 250 [120 mm <sup>2</sup> ]	8 Str.	4/0	7 #5	—	—	#4 (1/2")	650
KS31	1.7 [43.2]	2.51 [63.8]	1.41 [35.8]	1/0 Str. [50 mm <sup>2</sup> ] - 350 [185 mm <sup>2</sup> ]	1/0 Str.	—	19 #8	—	—	#5 (5/8")	650
KS34	1.82 [46.2]	2.79 [70.9]	1.48 [37.6]	2/0 Str. [70 mm <sup>2</sup> ] - 500 [240 mm <sup>2</sup> ]	2/0 Str.	—	19 #6	—	—	#6 (3/4")	825

Equivalent Metric Size given in [ ]; Metric sizes provided for reference only.