

TABLE OF CONTENTS



Crimpers — Battery Actuated

PAT46LWS..... N-8
 PAT46LW N-9
 PAT750 N-10
 PAT644..... N-11
 PAT81KFT N-12
 PAT4PC834..... N-13
 PAT600..... N-14
 PAT500SJ6 Series N-15
 PATMD6 Series N-16
 PATMD6LIWCJ Series N-17
 PATMD6LICUTKIT1 Series N-18
 CSMD6 Series N-19



Crimpers — Self-Contained Hydraulic

Y750HSXT N-20
 Y35..... N-21
 Y39..... N-22
 Y644HSXT N-23
 Y81KFT N-24
 Y4PC834 N-25
 Y500CTHS..... N-26



Tooling

Table of Contents - Continued

Crimpers — Remote Hydraulic

Y60LW.....	N-27
Y46LWSBH.....	N-28
Y46LWBH.....	N-29
Y45.....	N-30
Y750BHXT.....	N-31
Y35BH.....	N-32
Y39BH.....	N-33
Y644MBH.....	N-34
Y81KFTMBH.....	N-35
Y4PC834MBH.....	N-36
Y34BH.....	N-37
Y29BH.....	N-38



Crimpers — Mechanical & Ratchet

Y10D.....	N-39
Y1022.....	N-39
Y2210FL.....	N-40
YFTOOL Series.....	N-41
Y8MRB1.....	N-42
MR8 Series.....	N-43
Y10MRSA1.....	N-44
MRE1022 Series.....	N-45
MR Series.....	N-46
MR4C.....	N-47
Y1MRTC.....	N-48
Y122CMR.....	N-49
Y122CMR Kits.....	N-50
M8ND.....	N-51
MRC840 Series.....	N-52
MY28/MY29 Series.....	N-53
OH25.....	N-54
OUR840.....	N-55
MD6 Series.....	N-56
MD7 Series.....	N-57
MD734R.....	N-58





Crimpers — OEM

Y46OEM12T N-59
Y46OEM11T N-60
OEM840NCP N-61
Y6NCP1 N-62
Y6NCP1SD N-63



Dies, Die Kits

60-Ton Dies (HPS/Fargo-equivalent) N-64 to N-69
12-Ton U Dies N-70
U Die Kit Series N-71
UM-Style Dies N-72
W Dies N-73
W Die Kit Series N-74
W Die Related N-75



Cutters — Battery Actuated

PATCUT4CUAL N-76
 PATCUT2156 N-77
 PATCUT129 N-78
 PATCUT245 N-79
 PAT500SJCUT Series N-80
 PATMDCUT Series N-81
 PATMDALLIF Series N-82
 BCC1000CUAL N-83



Cutters — Self-Contained Hydraulic

YCUT129ACSR N-84

Cutters — Remote Hydraulic

RHCC4CUAL N-85
 RHCC2156ACSR N-86
 RHCC129ACSR N-87
 RHCC245CUAL N-88



Cutters — Mechanical & Ratchet

MCC Series N-89
 RCC Cu/Al Series N-90
 RCC Cu/Al & ACSR Series N-91
 RWRC Series N-92



Hydraulic Pumps

Y10AC9 N-93
 EPP10 N-94
 EP10 N-95
 EPAC10 N-96
 HP10 N-97
 FP10 N-97
 GP10 N-98



Hydraulic Hoses; Pump Accessories

Hydraulic Hoses N-99 to N-100
 Pump Accessories N-101



Accessories

MD6 / MD7 Related N-102
Miscellaneous Accessories..... N-103



Gauges

FORCEGAUGE1215 N-104
PT292792..... N-104
WIREMIKE..... N-105

Adjustable Ratchet Torque Tools N-106



WEJTAP™ Installation Tooling

WEJTAP™ Tooling & Accessories..... N-107
Accessories and Kits..... N-108
Hotstick Accessories..... N-109



Auger BitsN-110



Low Pressure Hydraulic

HIW716ENF Impact WrenchN-111
HIW716MAG Impact WrenchN-112
LPHY750XT CrimperN-113
HBR Series BreakersN-114
Submersible PumpsN-115
HPT-R1 Series TampersN-116
HHS Series Hand Chain Saws.....N-117
HPS-LW Series Pole Saws.....N-118
HPP Series Power Packs.....N-119
Low Pressure Hydraulic Accessories N-120



Dieless Tool Expanded Cable Range Information

4-POINT® Series.....N-121 to N-122
Y644 Series N-123

IMPORTANT NOTES:

Unless noted, product is **not recommended for use on energized lines.**

Notes for battery operated crimpers and cutters:

It is recommended that battery be removed when changing jaws, changing dies or storing tool in case.

Select battery operated tools are available in alternate versions :

- Lithium-Ion; 3.0Ah, 5.0Ah
 - AC
 - DC
 - LCB (Less Charger, Batteries)
 - LCCB (Less Case, Charger, Batteries)

- Nickel Metal Hydride
 - AC
 - DC
 - 250 Volt

Contact Customer Service for further information.



EP (Enhanced Power) PATRIOT® tools operate on an 18V lithium-ion battery and are designed to accept an expanded range of Makita batteries, from larger capacity 5.0Ah to smaller 2.0Ah capacity, providing the user more choices and flexibility.

PLEASE NOTE: Prior models, tools **WITHOUT** the **EP Enhanced Power** label, will only accept Makita 18V 3.0Ah batteries. Do not force a 5.0Ah (or other size) battery into the tool. **Damage caused by doing so will void the warranty.**

Introduction

Installation Tools

The BURNDY® Engineered System features the most complete line of installation tools in the electrical industry. Available in various styles: battery actuated, mechanical, full cycle ratchet, self contained hydraulic, remote controlled hydraulic, along with power actuated pumps, hoses and accessories. BURNDY has the options to suit your needs. BURNDY tools are designed to integrate with the complete line of BURNDY connectors. Whether you're a small contractor working with #22 wire or a large utility working with 2500 kcmil conductor, there is a BURNDY tool available to do the job.

The benefits of the BURNDY® Engineered System are many, however, probably the most significant benefit is reliability. There is nothing more important to the electrical industry today than reliability. It represents the one area that leads to economical installations that will endure for the life of the installation.

Tool Center

An important element of the BURNDY® Engineered System is the BURNDY Tool Center, located at 150 Burndy Road, Littleton, NH 03561 (800-426-8720 or 603-621-4499). This center provides advice and information on the operation, maintenance and repair of BURNDY tools. The repair center is staffed with specialized technicians who provide the best possible service for all BURNDY tools, pumps and accessories.

BURNDY designed and produced the first self contained hydraulic compression electrical connector installation tool in 1934. In our continuing efforts to provide the highest quality and highest value connection systems, we offer the current BURNDY tool policy.

Limited Warranty

The majority of BURNDY tools are warranted to be free of defects in materials and workmanship for a period of five (5) years from the date of shipment. See specific tool page for length of warranty. If inspection by a certified technician

shows the trouble is caused by defective workmanship or material, BURNDY will repair or (at our option) replace the tool.

This Warranty does not apply where:

- Repairs or alterations have been made or attempted by others
- Repairs are required because of normal wear and tear
- The tool has been abused, misused or improperly maintained
- The use of any non-BURNDY product has resulted in damage to the tool

Repair Policy

All non-warranty repaired tools are completely reconditioned and receive a limited 1-year warranty. Non-warranty repair returns tools to like-new condition at a maximum cost of 40% of a new tool. A nominal service charge of \$5 is applied to all repairs to cover shop supplies, oil disposal and other miscellaneous services not covered as part of the standard repair.

If the decision is made not to repair, a handling charge of \$25.00 will be applied plus return freight costs.

Return Procedure

All tools sent to the BURNDY Tool Center (1-800-426-8720) or an authorized repair center must be accompanied by a purchase order with detailed bill to and ship to address authorizing repair. Requests for repair charges before work is done must be stated on the purchase order. All tools sent to the BURNDY Tool Center or an authorized repair center as a warranty claim must be accompanied by a proof of purchase such as a BURNDY invoice or invoice from any BURNDY distributor.

All tools must be shipped at the owner's expense, prepaid. BURNDY pays for the return freight, same surface freight as received. Airfreight returns will be returned same way collect for non-warranty repair and prepaid for warranty repairs.

This warranty and repair policy supercedes all previous policies and is in effect as of January 1, 2005.

PAT46LWS

15-Ton, Light Weight C-Head Hydraulic Self-Contained, 18V Lithium-Ion

- 2" jaw opening
- Used with P dies; U dies with PUADP1 adapter (sold separately)
- Light weight, scoop style C-head with 355° head rotation
- Overmolded, ergonomic handle
- Improved ergonomic balance
- Includes 2 batteries, charger, and polymer carrying case
- **EP Enhanced Power** labeled tools accept 2.0, 3.0, 4.0, and 5.0Ah Makita batteries

For Use On:

Copper - #8 AWG Str. - 1500 kcmil

Code Cable, Navy Cable, Flexible, Extra Flexible
1/2" - 1" Ground Rods

Terminals, grounding:

to 500 kcmil; YGA, YGHA, YGF

Terminals, uninsulated:

#8 - 1500 kcmil; YA, YA-2N, YA-L, YA-LB, YA-TC,
YA-2LN, YAB-4N, YAV-L, YAV-RS, YA-TC-FX

Terminals, insulated:

#8 - 2/0; YAEV-L, YAEV-H, YAEV-RS, YAEV-RH

Splices:

#8 - 1500 kcmil; YS, YS-T, YS-L, YS-LB, YST,
YSP-T, YGS, YGHS

Taps:

#14 - 1000 kcmil; YH, YCHC
to 4/0 AWG; YC-C

Taps, grounding:

to 500 kcmil; YGHC-C, YGHP-C, YGHR-C

Aluminum - #8 AWG - 1250 kcmil

Code Cables

Terminals: YA-A, AYP, AYPO

Splices: YS-A, YS-AT, YRB

Taps: YFD, YFN, YFO, YFR

ACSR - see Overhead Transmission & Distribution
Sections H & I of the current BURNDY® Master
Catalog



Specifications:

Output Force:	15 Tons
Tool Weight:	18.9 lbs
Size:	18.00" x 14.00" x 3.00"
Die Style:	P and U style (with PUADP1)
Jaw Opening:	2.00"
Operating Voltage:	18 V-DC Lithium-Ion
Recharge Time:	30 minutes (3.0Ah) 45 minutes (5.0Ah)
Warranty:	5 year limited warranty Lifetime warranty on INFINITY DRIVE® 3 year on batteries and charger

Accessories:

Catalog Number:	Description:
P15K:	Cutter Die, max. diameter 1.2"
PUADP1:	U Die Adapter
BAT18VLI:	3.0Ah Li-Ion battery
BAT18V5AHLI:	5.0Ah Li-Ion battery
PATCHGRLI:	120V-AC Charger
PATCHGRLLDC:	12/24V-DC Charger
PT208620:	Lanyard

Variations: (additional variations may be available)

Catalog Number:	Description:
PAT46LWSLI	with 3.0Ah Li-Ion batteries
PAT46CLWSLI	with rubber covered head (3.0Ah)
PAT46LWSL5	with 5.0Ah Li-Ion batteries
PAT46CLWSL5	with rubber covered head (5.0Ah)

See Important Notes on Page N-6.

PAT46LW

15-Ton, Light Weight Latch Head
Hydraulic Self-Contained, 18V Lithium-Ion

- 2" jaw opening
- Used with P dies; U dies with PUADP1 adapter (sold separately)
- Light weight, Latch-head
- 355° head rotation
- Ergonomically balanced
- Includes 2 batteries, charger, and polymer carrying case
- **EP Enhanced Power** labeled tools accept 2.0, 3.0, 4.0, and 5.0Ah Makita batteries

For Use On:

Copper - #8 AWG Str. - 1500 kcmil

Code Cable, Navy Cable, Flexible, Extra Flexible
1/2" - 1" Ground Rods

Terminals, grounding:

to 500 kcmil; YGA, YGHA, YGF

Terminals, uninsulated:

#8 - 1500 kcmil; YA, YA-2N, YA-L, YA-LB, YA-TC,
YA-2LN, YAB-4N, YAV-L, YAV-RS, YA-TC-FX

Terminals, insulated:

#8 - 2/0; YAEV-L, YAEV-H, YAEV-RS, YAEV-RH

Splices:

#8 - 1500 kcmil; YS, YS-T, YS-L, YS-LB, YST,
YSP-T, YGS, YGHS

Taps:

#14 - 1000 kcmil; YH, YCHC
to 4/0 AWG; YC-C

Taps, grounding:

to 500 kcmil; YGHC-C, YGHP-C, YGHR-C

Aluminum - #8 AWG - 1250 kcmil

Code Cables

Terminals: YA-A, AYP, AYPO

Splices: YS-A, YS-AT, YRB

Taps: YFD, YFN, YFO, YFR

ACSR - see Overhead Transmission & Distribution
Sections H & I of the current BURNDY® Master
Catalog



Specifications:

Output Force:	15 Tons
Tool Weight:	16.8 lbs
Size:	18.75" x 13.75" x 3.75"
Die Style:	P and U style (with PUADP1)
Jaw Opening:	2.00"
Operating Voltage:	18 V-DC Lithium-Ion
Recharge Time:	30 minutes (3.0Ah) 45 minutes (5.0Ah)
Warranty:	5 year limited warranty Lifetime warranty on INFINITY DRIVE® 2 year on batteries and charger

Accessories:

Catalog Number:	Description:
P15K:	Cutter Die, max. diameter 1.2"
PUADP1:	U Die Adapter
BAT18VLI:	3.0Ah Li-Ion battery
BAT18V5AHLI:	5.0Ah Li-Ion battery
PATCHGRLLI:	120V-AC Charger
PATCHGRLLDC:	12/24V-DC Charger
PT208620:	Lanyard

Variations: (additional variations may be available)

Catalog Number:	Description:
PAT46LWLI	with 3.0Ah batteries
PAT46LWL5	with 5.0Ah batteries

See Important Notes on Page N-6.

PAT750

PATRIOT® 12-Ton, C-Head
 Hydraulic Self-Contained, 18V Lithium-Ion

- 1.65" jaw opening
- Used with U dies
- C-head with 355° head rotation
- Bearing/alignment guide for HYGROUND® as well as other asymmetrical connectors
- Includes 2 batteries, charger, and polymer carrying case
- **EP Enhanced Power** labeled tools accept 2.0, 3.0, 4.0, and 5.0Ah Makita batteries



For Use On:

Tension Sleeves

Copper	#8 sol. - 500 kcmil
Aluminum	#8 sol. - 587.2 kcmil
ACSR	#4 - 556.5 kcmil

Taps

Copper	#14 sol. - 500 kcmil
Aluminum	#8 - 500 kcmil

Aerial Cable

Copper	#6 - 500 kcmil
--------	----------------

Terminals & Splices

Copper	#8 - 750 kcmil
Aluminum	#8 - 750 kcmil
ACSR	#4 - 556 kcmil

HYGROUND® (Compression Grounding)

Copper	#8 - 500 kcmil
Ground Rods	1/2" - 1" diameter



Wide U-dies (sold separately) can be used with long barrel terminals and splices saving time and labor!

Specifications:

Output Force:	12 Tons
Tool Weight:	15.7 lbs
Size:	15.75" x 13.50" x 3.50"
Die Style:	U style
Jaw Opening:	1.65"
Operating Voltage:	18 V-DC Lithium-Ion
Recharge Time:	30 minutes (3.0Ah) 45 minutes (5.0Ah)
Warranty:	5 year limited warranty Lifetime warranty on INFINITY DRIVE® 3 year on batteries and charger

Accessories:

Catalog Number:	Description:
BAT18VLI:	3.0Ah Li-Ion battery
BAT18V5AHLI:	5.0Ah Li-Ion battery
PATCHGRLI:	120V-AC Charger
PATCHGRLLDC:	12/24V-DC Charger
PT208620:	Lanyard

Variations: (additional variations may be available)

Catalog Number:	Description:
PAT750LI	with 3.0Ah Li-Ion batteries
PAT750CLI	PAT750LI with rubber covered head (3.0Ah)
PAT750KLI	PAT750LI with KEARNEY™ style head (3.0Ah) used with KEARNEY™ WH1 and WH2 and BURNDY U dies with KUADP adapter (sold separately)
PAT750L5	with 5.0Ah Li-Ion batteries
PAT750CL5	PAT750L5 with rubber covered head (5.0Ah)

See Important Notes on Page N-6.

PAT644

PATRIOT® 11-Ton, Latch Head
Hydraulic Self-Contained, 18V Lithium-Ion

- Dieless system
- Range taking capabilities
- 355° head rotation
- Ergonomically balanced
- Includes 2 batteries, charger, and polymer carrying case
- **EP Enhanced Power** labeled tools accept 2.0, 3.0, 4.0, and 5.0Ah Makita batteries



For Use On:

Copper #6 -1000 kcmil

Terminals: YA-L, YA-2LN, YA, YA-2N, YA-L-2TC, YAB-4N, YA-L-TC, YA-2L, YA-4N

Splices: YS-L, YS, YS-T

Aluminum #6 - 900 kcmil

Terminals: YA-A, YA-A-TN

Splices: YS-A

HYPLUG™: AYP, AYPO

See Expanded Range details in Reference Section

Variations: (additional variations may be available)

Catalog Number:	Description:
PAT644LI	with 3.0Ah Li-Ion batteries
PAT644L5	with 5.0Ah Li-Ion batteries

Specifications:

Output Force:	11 Tons
Tool Weight:	15.9 lbs
Size:	15.62" x 14.12" x 3.25"
Die Style:	Dieless
Operating Voltage:	18 V-DC Lithium-Ion
Recharge Time:	30 minutes (3.0Ah) 45 minutes (5.0Ah)
Warranty:	5 year limited warranty Lifetime warranty on INFINITY DRIVE® 3 year on batteries and charger

Accessories:

Catalog Number:	Description:
BAT18VLI:	3.0Ah Li-Ion battery
BAT18V5AHLI:	5.0Ah Li-Ion battery
PATCHGRLLI:	120V-AC Charger
PATCHGRLLIDC:	12/24V-DC Charger
PT208620:	Lanyard

See Important Notes on Page N-6.

PAT81KFT

6-Ton, 4-POINT® Dieless Latch Head Hydraulic Self-Contained, 18V Lithium-Ion

- Dieless system
- Range taking capabilities
- 360° head rotation
- Mechanical ram release (no battery consumption)
- Includes 2 batteries, charger, and polymer carrying case
- **EP Enhanced Power** labeled tools accept 2.0, 3.0, 4.0, and 5.0Ah Makita batteries

For Use On:

Copper #8 -1000 kcmil

Terminals: YA, YA-L

Splices: YS-L, YS, YS-T, Y-R

Copper Flex #8 - 777.7 kcmil Flex (750 Nominal)

Terminals: YA-FX, YAV, YA-L-FX

Splices: YS, YSV-FXB

Aluminum #8 - 750 kcmil

Terminals: YA-A, YA-A-TN

Splices: YS-A

HYPLUG™: AYP, AYPO

See Expanded Range details in Reference Section

Variations: (additional variations may be available)

Catalog Number:	Description:
PAT81KFTLI	with 3.0Ah Li-Ion batteries
PAT81KFL5	with 5.0Ah Li-Ion batteries



Specifications:

Output Force:	6 Tons
Tool Weight:	13.2 lbs
Size:	15.62" x 14.12" x 3.25"
Die Style:	Dieless
Operating Voltage:	18 V-DC Lithium-Ion
Recharge Time:	30 minutes (3.0Ah) 45 minutes (5.0Ah)
Warranty:	5 year limited warranty Lifetime warranty on INFINITY DRIVE® 3 year on batteries and charger

Accessories:

Catalog Number:	Description:
BAT18VLI:	3.0Ah Li-Ion battery
BAT18V5AHLI:	5.0Ah Li-Ion battery
PATCHGRLLI:	120V-AC Charger
PATCHGRLLDC:	12/24V-DC Charger
PT208620:	Lanyard

PAT4PC834

6-Ton, 4-POINT® Dieless, C-Head
Hydraulic Self-Contained, 18V Lithium-Ion

- Dieless system
- Range taking capabilities
- 360° head rotation
- Ergonomically balanced
- Includes 2 batteries, charger, and polymer carrying case
- **EP Enhanced Power** labeled tools accept 2.0, 3.0, 4.0, and 5.0Ah Makita batteries



For Use On:

Copper

Terminals: YA, YA-L (#8-1000 kcmil)

Splices: YS-L, YS, YS-T, Y-R (#8-500 kcmil)

Copper Flex

Terminals: YA-FX, YAV, YA-L-FX (#8-777.7 Flex)

Splices: YS, YSV-FXB (#8-500 kcmil)

Aluminum

Terminals: YA-A, YA-A-TN (#8-750 kcmil)

Splices: YS-A (#8-350 kcmil)

HYPLUG™: AYP, AYPO (#8-750 kcmil)

See Expanded Range details in Reference Section

Variations: (additional variations may be available)

Catalog Number:	Description:
PAT4PC834LI	with 3.0Ah Li-Ion batteries
PAT4PC834L5	with 35.0Ah Li-Ion batteries

Specifications:

Output Force:	6 Tons
Tool Weight:	13.0 lbs
Size:	15.62" x 14.12" x 3.25"
Die Style:	Dieless
Operating Voltage:	18 V-DC Lithium-Ion
Recharge Time:	30 minutes (3.0Ah) 45 minutes (5.0Ah)
Warranty:	5 year limited warranty Lifetime warranty on INFINITY DRIVE® 3 year on batteries and charger

Accessories:

Catalog Number:	Description:
BAT18VLI:	3.0Ah Li-Ion battery
BAT18V5AHLI:	5.0Ah Li-Ion battery
PATCHGRLI:	120V-AC Charger
PATCHGRLIDC:	12/24V-DC Charger
PT208620:	Lanyard

See Important Notes on Page N-6.

PAT600

PATRIOT® 6-Ton, Latch Head
 Hydraulic Self-Contained, 18V Lithium-Ion

- Permanent functional D3 groove (no die needed)
- Uses W, X, W-VT style dies
- 180° head rotation
- Enhanced clearance for tap connections
- Includes 2 batteries, charger, and polymer carrying case
- **EP Enhanced Power** labeled tools accept 2.0, 3.0, 4.0, and 5.0Ah Makita batteries

For Use On:

Copper #8 -600 kcmil

Terminals: YA, YA-L
Splices: YS-L, YS, YS-T, Y-R

Copper Flex #8 - 350 kcmil Flex

Terminals: YA-FX, YAV, YA-L-FX
Splices: YS, YSV-FXB

Aluminum #8 - 350 kcmil

Terminals: YA-A, YA-A-TN
Splices: YS-A

Variations: (additional variations may be available)

Catalog Number:	Description:
PAT600LI	with 3.0Ah Li-Ion batteries
PAT600L5	with 5.0Ah Li-Ion batteries



Specifications:

Output Force:	6 Tons
Tool Weight:	10.1 lbs
Size:	14.50" x 13.75" x 3.50"
Die Style:	W, V, W-VT style dies
Operating Voltage:	18 V-DC Lithium-Ion
Recharge Time:	30 minutes (3.0Ah) 45 minutes (5.0Ah)
Warranty:	5 year limited warranty Lifetime warranty on INFINITY DRIVE® 3 year on batteries and charger

Accessories:

Catalog Number:	Description:
BAT18VLI:	3.0Ah Li-Ion battery
BAT18V5AHLI:	5.0Ah Li-Ion battery
PATCHGRLLI:	120V-AC Charger
PATCHGRLLIDC:	12/24V-DC Charger
PT208620:	Lanyard
WDIETREE:	W die holder

PAT500SJ6

PATRIOT® 6-Ton, Scissor Action
Hydraulic Self-Contained, 18V Lithium-Ion

- Interchangeable scissor action crimping and cutting jaws
- 180° head rotation
- Uses W and X style dies
- Ergonomically balanced tool design
- Includes 2 batteries, charger, and polymer carrying case
- **EP Enhanced Power** labeled tools accept 2.0, 3.0, 4.0, and 5.0Ah Makita batteries



For Use On:

Copper, Aluminum, ACSR, Steel, Copperweld, Alumoweld, 6201, 5005, Compressed, and Compact Conductors

Taps:

Copper: #10 sol. to 2/0 str.
Aluminum & ACSR: #14 sol. to 4/0 ACSR

Stirrups:

#6 to 4/0 ACSR

Overhead Full Tension Deadends, Full Tension Splices and Terminals:

#10 str. to 4/0 ACSR

Installs Splices, Taps or Terminations:

#8 to 500 kcmil Copper Stranded (YA, YA-L, YS, YS-L)
#8 to 350 kcmil Copper Flex
#8 to 350 kcmil Aluminum (YA-A, YS-A)

Variations: (additional variations may be available)

Catalog Number:	Description:
PAT500SJ6LI	BG and D3 grooves (3.0Ah)
PAT500SJ68LI	O and D3 grooves (3.0Ah)
PAT500SJ66LI	D3 groove only (snub-nose) (3.0Ah)
PAT500SJ6L5	BG and D3 grooves (5.0Ah)
PAT500SJ68L5	O and D3 grooves (5.0Ah)
PAT500SJ66L5	D3 groove only (snub-nose) (5.0Ah)

Kits:

Catalog Number:	Description:
PAT500SJ6LICUTKIT1	Kit includes crimp head with BG & D3 grooves, cutter jaw, 120V charger and 2 batteries (3.0Ah)
PAT500SJ68LICUTKIT1	Kit includes crimp head with O & D3 grooves, cutter jaw, 120V charger and 2 batteries (3.0Ah)

Specifications:

Output Force:	6 Tons
Tool Weight:	11.5 lbs
Size:	17.00" X 14.25" X 3.00"
Die Style:	W and X (with crimping jaws)
Operating Voltage:	18 V-DC Lithium-Ion
Recharge Time:	30 minutes (3.0Ah) 45 minutes (5.0Ah)
Warranty:	5 year limited warranty Lifetime warranty on INFINITY DRIVE® 3 year on batteries and charger

Accessories:

Catalog Number:	Description:
BAT18VLI:	3.0Ah Li-Ion battery
BAT18V5AHLI:	5.0Ah Li-Ion battery
PATCHGRLLI:	120V-AC Charger
PATCHGRLLDC:	12/24V-DC Charger
PATMD6JC:	Jaw covers for PATMD6 and PATMD68 versions
PATMD66JC:	Jaw covers for PATMD66 snub-nose versions
PT10074020:	Wrist strap
W28K:	Cutter Dies (cuts 4-4/0 Cu, Al, ACSR)
WDIETREE:	W-die holder for 6 die sets

Interchangeable Jaw Assemblies:

Catalog Number:	Description:
PATJAWSMD6	BG and D3 grooves
PATJAWSMD68	O and D3 grooves
PATJAWSMD66	D3 groove only (snub-nose)
PATJAWSCUT	Cutter jaw set

See Important Notes on Page N-6.

PATMD6

6-Ton, IN-LINE®, Scissor Action

Hydraulic Self-Contained, 18V Lithium-Ion

- Interchangeable scissor action crimping and cutting jaws
- 350° head rotation
- Uses W and X style dies
- Ergonomically balanced tool design with trigger lock
- Includes 2 batteries, charger, and soft carrying case

For Use On:

Copper, Aluminum, ACSR, Steel, Copperweld, Alumoweld, 6201, 5005, Compressed, and Compact Conductors

Taps:

Copper: #10 sol. to 2/0 str.

Aluminum & ACSR: #14 sol. to 4/0 ACSR

Stirrups:

#6 to 4/0 ACSR

Overhead Full Tension Deadends, Full Tension Splices and Terminals:

#10 str. to 4/0 ACSR

Installs Splices, Taps or Terminations:

#8 to 500 kcmil Copper Stranded (YA, YA-L, YS, YS-L)

#8 to 350 kcmil Copper Flex

#8 to 350 kcmil Aluminum (YA-A, YS-A)

Variations: (additional variations may be available)

Catalog Number:	Description:
-----------------	--------------

PATMD6LI:	BG and D3 grooves (3.0Ah)
-----------	---------------------------

PATMD68LI:	O and D3 grooves (3.0Ah)
------------	--------------------------

PATMD66LI:	D3 groove only (snub-nose) (3.0Ah)
------------	------------------------------------

PATMD6KLI:	KEARNEY™ groove (snub-nose) (3.0Ah) [Accepts KEARNEY™ dies; BURNDY W and X dies with KWADP adapter, sold separately]
------------	---

Crimp/Cut Kits are also available supplied with both crimping and cutting jaws



Specifications:

Output Force:	6 Tons
Tool Weight:	7.8 lbs
Size:	21.00" x 5.50" x 3.75"
Die Style:	W and X (with crimping jaws)
Operating Voltage:	18 V-DC Lithium-Ion
Recharge Time:	30 minutes (3.0Ah)
Warranty:	5 year limited warranty Lifetime warranty on INFINITY DRIVE® 3 year on batteries and charger

Accessories:

Catalog Number:	Description:
BAT18VLI:	3.0Ah Li-Ion battery
PATCHGRLI:	120V-AC Charger
PATCHGRLIDC:	12/24V-DC Charger
PATMD6JC:	Jaw covers for PATMD6 and PATMD68 versions
PATMD66JC:	Jaw covers for PATMD66 snub-nose versions
PATMD6KJC:	Jaw covers for PATMD6K snub-nose versions
W28K:	Cutter Dies (cuts 4-4/0 Cu, Al, ACSR)
WDIETREE:	W-die holder for 6 die sets
TOOLBAGMDLI:	Tool bag (included with tool)
PT10074020:	Wrist strap

Interchangeable Jaw Assemblies:

Catalog Number:	Description:
PATJAWSMD6	BG and D3 grooves
PATJAWSMD68	O and D3 grooves
PATJAWSMD66	D3 groove only (snub-nose)
PATJAWSMD6K	KEARNEY™ groove (snub-nose)
PATJAWSCUT	Cutter jaw set

See Important Notes on Page N-6.

PATMD6LIWCJ

6-Ton, IN-LINE®, Crimp/Cut Kit
Hydraulic Self-Contained, 18V Lithium-Ion

- Interchangeable scissor action crimping and cutting jaws included
- 350° head rotation; trigger lock
- Actuated blade guide (with cutting jaws)
- Kit includes tool, crimping jaw, cutting jaw, 2 batteries, charger, and soft carrying case

For Use On:

Crimping:

Copper, Aluminum, ACSR, Steel, Copperweld, Alumoweld, 6201, 5005, Compressed, and Compact Conductors

Taps:

Copper: #10 sol. to 2/0 str.
Aluminum & ACSR: #14 sol. to 4/0 ACSR

Stirrups:

#6 to 4/0 ACSR

Overhead Full Tension Deadends, Full Tension Splices and Terminals:

#10 str. to 4/0 ACSR

Installs Splices, Taps or Terminations:

#8 to 500 kcmil Copper Stranded (YA, YA-L, YS, YS-L)
#8 to 350 kcmil Copper Flex
#8 to 350 kcmil Aluminum (YA-A, YS-A)

Cutting Capacity (Maximum):

ACSR:

556 kcmil (26/7 Dove)

AAC:

636 kcmil

Copper:

500 kcmil soft drawn copper



Specifications:

Output Force:	6 Tons
Tool Weight:	7.8 lbs
Size:	21.00" x 5.50" x 3.75"
Die Style:	W and X (with crimping jaws)
Operating Voltage:	18 V-DC Lithium-Ion
Recharge Time:	30 minutes
Warranty:	5 year limited warranty Lifetime warranty on INFINITY DRIVE® 3 year on batteries and charger

Variations: (additional variations may be available)

Catalog Number:	Description:
PATMD6LIWCJ	BG & D3 Grooves, soft case
PATMD68LIWCJ	O & D3 Grooves, soft case
PATMD66LIWCJ	D3 Groove only (Snub-nose), soft case
PATMD6KLIWCJ	KEARNEY™ (Snub-nose), hard case

Accessories:

Catalog Number:	Description:
BAT18VLI:	Hi-capacity LI battery (3.0 AH)
PATCHGRLI:	120V-AC Charger
PATCHGRLLDC:	12/24V-DC Charger
PATMD6JC:	Jaw covers for PATMD6 and PATMD68 versions
PATMD66JC:	Jaw covers for PATMD66 snub-nose versions
PATMD6KJC:	Jaw covers for PATMD6K snub-nose versions
W28K:	Cutter Dies (cuts 4-4/0 Cu, Al, ACSR)
WDIETREE:	W die holder for 6 sets (sold separately)
TOOLBAGMDLI:	Replacement Tool Bag
PT10074020:	Wrist Strap

See Important Notes on Page N-6.

PATMD6LICUTKIT1

6-Ton, IN-LINE®, Crimp/Cut Kit Hydraulic Self-Contained, 18V Lithium-Ion

- Interchangeable scissor action crimping and cutting jaws included
- 350° head rotation; trigger lock
- Actuated blade guide (with cutting jaws)
- Kit includes tool, crimping jaw, cutting jaw, 2 batteries, charger, and hard plastic carrying case

For Use On:

Crimping:

Copper, Aluminum, ACSR, Steel, Copperweld, Alumoweld, 6201, 5005, Compressed, and Compact Conductors

Taps:

Copper: #10 sol. to 2/0 str.

Aluminum & ACSR: #14 sol. to 4/0 ACSR

Stirrups:

#6 to 4/0 ACSR

Overhead Full Tension Deadends, Full Tension Splices and Terminals:

#10 str. to 4/0 ACSR

Installs Splices, Taps or Terminations:

#8 to 500 kcmil Copper Stranded (YA, YA-L, YS, YS-L)

#8 to 350 kcmil Copper Flex

#8 to 350 kcmil Aluminum (YA-A, YS-A)

Cutting Capacity (Maximum):

ACSR:

556 kcmil (26/7 Dove)

AAC:

636 kcmil

Copper:

500 kcmil soft drawn copper



Includes Case

Specifications:

Output Force:	6 Tons
Tool Weight:	7.8 lbs
Size:	21.00" x 5.50" x 3.75"
Die Style:	W and X (with crimping jaws)
Operating Voltage:	18 V-DC Lithium-Ion
Recharge Time:	30 minutes
Warranty:	5 year limited warranty Lifetime warranty on INFINITY DRIVE® 1 year on batteries and charger

Variations: (additional variations may be available)

Catalog Number:	Description:
PATMD6LICUTKIT1	BG & D3 Grooves, hard case
PATMD68LICUTKIT1	O & D3 Grooves, hard case
PATMD66LICUTKIT1	D3 Groove only (Snub-nose), hard case
PATMD6KLICUTKIT1	KEARNEY™ (Snub-nose), hard case

Accessories:

Catalog Number:	Description:
BAT18VLI:	Hi-capacity LI battery (3.0 AH)
PATCHGRLL:	120V-AC Charger
PATCHGRLLDC:	12/24V-DC Charger
PATMD6JC:	Jaw covers for PATMD6 and PATMD68 versions
PATMD66JC:	Jaw covers for PATMD66 snub-nose versions
PATMD6KJC:	Jaw covers for PATMD6K snub-nose versions
W28K:	Cutter Dies (cuts 4-4/0 Cu, Al, ACSR)
WDIETREE:	W die holder for 6 sets (sold separately)
PT50025151:	Replacement plastic carry case
PT10074020:	Wrist Strap

See Important Notes on Page N-6.

CSMD6LI

Contractor Series, 6-Ton, IN-LINE®
Hydraulic Self-Contained, 18V Lithium-Ion

- 2 economy versions available with a fixed jaw
- 350° head rotation
- Accepts all BURNDY W and X style die sets
- Safety lock, ergonomically balanced, non-slip grip
- Includes 1 (3.0Ah) battery and charger

For Use On:

Copper, Aluminum, ACSR, Steel, Copperweld, Alumoweld, 6201, 5005, Compressed, and Compact Conductors

Taps:

Copper: #10 sol. to 2/0 str.
Aluminum & ACSR: #14 sol. to 4/0 ACSR

Stirrups:

#6 to 4/0 ACSR

Overhead Full Tension Deadends, Full Tension

Splices and Terminals:

#10 str. to 4/0 ACSR

Installs Splices, Taps or Terminations:

#8 to 500 kcmil Copper Stranded (YA, YA-L, YS, YS-L)
#8 to 350 kcmil Copper Flex
#8 to 350 kcmil Aluminum (YA-A, YS-A)

Variations: (additional variations may be available)

Catalog Number:	Description:
CSMD6LI:	BG and D3 grooves
CSMD68LI:	O and D3 grooves



*Shown: CSMD6-LI
Scissor-action jaws,
safety orange*

Specifications:

Output Force:	6 Tons
Tool Weight:	7.8 lbs
Size:	21.00" x 5.50" x 3.75"
Die Style:	W and X
Operating Voltage:	18 V-DC Lithium-Ion
Recharge Time:	30 minutes
Warranty:	1 year limited warranty tool, battery, and charger

Accessories:

Catalog Number:	Description:
BAT18VLI:	Hi-capacity LI battery (3.0 AH)
PATCHGRLL:	120V-AC Charger
PATCHGRLLDC:	12/24V-DC Charger
PATMD6JC:	Jaw covers for CSMD6 and CSMD68 versions
W28K:	Cutter Dies (cuts 4-4/0 Cu, Al, ACSR)
WDIETREE:	W-die holder for 6 die sets
TOOLBAGMDLI:	Tool bag (sold separately)
PT10074020:	Wrist strap

See Important Notes on Page N-6.

Y750HSXT

12-Ton, C-Head, HYPRESS™
 Hydraulic Self-Contained, Hand Operated Tool

- 355° head rotation
- 1.65" jaw opening
- Rapid advance pump
- Uses standard BURNDY U dies (sold separately)

For Use On:

Tension Sleeves

Copper	#8 sol. - 500 kcmil
Aluminum	#8 sol. - 587.2 kcmil
ACSR	#4 - 556.5 kcmil

Taps

Copper	#14 sol. - 500 kcmil
Aluminum	#8 - 500 kcmil

Aerial Cable

Copper	#6 - 500 kcmil
--------	----------------

Terminals & Splices

Copper	#8 - 750 kcmil
Aluminum	#8 - 750 kcmil
ACSR	#4 - 556 kcmil

HYGROUNDR® (Compression Grounding)

Copper	#8 - 500 kcmil
Ground Rods	1/2" - 1" diameter

Variations:

Catalog Number:	Description:
Y750HSXT	Standard version
Y750CHSXT	Rubber covered head version



Specifications:

Output Force:	12 Tons
Tool Weight:	14.5 lbs
Size:	24.00" x 8.75" x 2.88"
Die Style:	U style
Jaw Opening:	1.65"
Warranty:	5 year limited warranty

Accessories:

Catalog Number:	Description:
PT10024162:	Plastic carrying case for Y750HSXT/Y750CHSXT
FORCEGAUGE1215:	Force test gauge for accurate reading of output force
PT29291:	Steel die case for U dies

Y35

12-Ton, C-Head, HYPRESS™
Hydraulic Self-Contained, Hand Operated Tool

- 180° head rotation
- Uses BURNDY U style dies (sold separately)
- Body and handles rubber covered for impact protection
- Trigger controlled ram release

For Use On:

Copper #8 str. - 500 kcmil code cable

- Grounding Terminals:**
YGH, YGHA, YGF
- Grounding Splices:**
YGS, YGHS

Copper #8 str. - 500 kcmil and up to 3/4" ground rod

- Grounding Taps:**
YGHC-C, YGHP-C, YGHR-C

Copper #8 str. - 750 kcmil code cable, N30 - N500 Navy cable, flexible, and extra flex

- Terminals (Bare):**
YA, YA-2N, YA-L, YA-LB, YA-2LN
- Terminals (Insulated):**
YAEV-L, YAEV-H, YAEV-RS, YAEV-RH
- Splices to 400 kcmil only:**
YS, YS-T, YS-L, YS-LB, YSV-L, YSM

Aluminum #8 str. - 750 kcmil code cable

- Terminals:**
YA-A, AYP, AYPO
- Splices to 350 kcmil only:**
YSA, YRB, YS-AT

ACSR:

See Overhead Transmission and Distribution sections in the BURNDY Master Catalog



Specifications:

Output Force:	12 Tons
Tool Weight:	13.0 lbs
Size:	23.25" x 8.75" x 4.75"
Die Style:	U style
Warranty:	5 year limited warranty

Variations:

Catalog Number:	Description:
Y35	Standard tool (rubber covered body and handles only)
Y352	Y35 with rubber covered head, body, and handles

Accessories:

Catalog Number:	Description:
PT2972:	Steel Carry Case for Y35 (included with tool)
PT29360:	Steel Carry Case for Y352 (included with tool)
Y35/Y39REPKITA:	Seal Repair Kit

Y39

12-Ton, Latch Head, HYPRESS™
Hydraulic Self-Contained, Hand Operated Tool

- 180° head rotation
- Body and handles rubber covered for impact protection
- Trigger controlled ram release
- Uses standard BURNDY U dies (sold separately)

For Use On:

Copper #6 AWG - 750 kcmil str. Code Cable
N30 - N650 Navy Cable, Flexible, and Extra Flexible

Terminals (Bare):

YA, YA-L, YA-LB, YGH, YGHA

Splices and Tees (Bare):

YS, YS-L, YS-LB, YS-T, YSP-T, YST

Copper AN or AIR #6 AWG - 4/0 str. Code Cable
AN6 - AN4/0 Aircraft Cable, Flexible, and Extra Flexible

Terminals (Bare):

YAV-L, YAV-RS

Splices (Bare):

YSV-L

Copper #8 AWG - 2/0 str. Code Cable
AN8 - AN2/0 Aircraft Cable, Flexible, and Extra Flexible

Terminals (Insulated):

YAEV-L, YAEV-RS, YAEV-RH

Copper #12 AWG sol. - 250 kcmil

Taps:

YC-C, YGHC-C, YGHP-C, YGHR-C

Aluminum #8 AWG - 750 kcmil Code Cable

Terminals:

YA-A

Splices:

YS-A, YS-AT, YRB

Aluminum #6 str. - 500 kcmil

Taps:

YFD, YFN, YFO



Specifications:

Output Force:	12 Tons
Tool Weight:	12.0 lbs
Size:	23.00" x 8.75" x 4.00"
Die Style:	U style
Warranty:	5 year limited warranty

Variations:

Catalog Number:	Description:
Y39	Standard tool (rubber covered body and handles)

Accessories:

Catalog Number:	Description:
PT2972:	Metal Carrying Case (included with tool)
Y35/Y39REPKITA:	Seal Repair Kit

Y644HSXT

11-Ton, Dieless Latch Head
Hydraulic Self-Contained, Hand Operated Tool

- 355° head rotation
- Dieless System
- Range taking capabilities
- Only “1” crimp necessary for most standard and long barrel terminals and splices
- Easy inspection; positive identification proved with BURNDY® ‘Bug’ (⊖) embossment after crimp completion

For Use On:

Copper #6 - 1000 kcmil

Terminals:

YA-L, YA-2-LN, YA, YA-FXB, YA-2N, YA-L-2TC, YA-L-FX,

YAB-4N, YA-L-TC, YA-2L, YA-4N, YEV-P-FX, YE-P,

YE-P-FX

Splices:

YS-L, YS, YS-T

Aluminum #6 str. - 900 kcmil

Terminals:

YA-A, YA-A-TN

Splices:

YS-A

HYPLUG™:

AYP, AYPO

See Expanded Range details in Reference Section



Specifications:

Output Force:	11 Tons
Tool Weight:	15.0 lbs
Size:	23.25" x 7.13" x 3.00"
Die Style:	Dieless
Warranty:	5 year limited warranty

Variations:

Catalog Number:	Description:
Y644HSXT	Standard tool

Accessories:

Catalog Number:	Description:
Y644HSCASE:	Plastic carrying case (included with tool)

Y81KFT

6-Ton, 4-POINT® Dieless Latch Head Hydraulic Self-Contained, Hand Operated Tool

- Dieless System
- Range taking capabilities
- Flip top latch head design
- 360° head rotation

For Use On:

Copper #8 -1000 kcmil

Terminals: YA, YA-L

Splices: YS-L, YS, YS-T, Y-R

Copper Flex #8 - 777.7 kcmil Flex (750 Nominal)

Terminals: YA-FX, YAV, YA-L-FX

Splices: YS, YSV-FXB

Aluminum #8 - 750 kcmil

Terminals: YA-A, YA-A-TN

Splices: YS-A

HYPLUG™: AYP, AYPO

See Expanded Range details in Reference Section



Specifications:

Output Force:	6 Tons
Tool Weight:	12.0 lbs
Size:	25.62" x 7.75" x 2.50"
Die Style:	Dieless
Warranty:	5 year limited warranty

Variations:

Catalog Number: Y81KFT	Description: Standard 4-POINT® Dieless Latch Head tool
----------------------------------	--

Accessories:

Catalog Number: PT10050733:	Description: Plastic Carrying Case (included with tool)
---------------------------------------	---

Y4PC834

6-Ton, 4-POINT® Dieless C-Head
Hydraulic Self-Contained, Hand Operated Tool

- 360° head rotation
- Dieless System
- Range taking capabilities
- Handle trigger release

For Use On:

Copper

Terminals: YA, YA-L (#8-1000 kcmil)

Splices: YS-L, YS, YS-T, Y-R (#8-500 kcmil)

Copper Flex

Terminals: YA-FX, YAV, YA-L-FX (#8-777.7 Flex)

Splices: YS, YSV-FXB (#8-500 kcmil)

Aluminum

Terminals: YA-A, YA-A-TN (#8-750 kcmil)

Splices: YS-A (#8-350 kcmil)*

HYPLUG™: AYP, AYPO (#8-750 kcmil)

*Range limited due to jaw opening. For a more expanded range, please see the PAT81KFT.

See Expanded Range details in Reference Section



Specifications:

Output Force:	6 Tons
Tool Weight:	11.9 lbs
Size:	25.62" x 7.75" x 2.50"
Die Style:	Dieless
Warranty:	5 year limited warranty

Variations:

Catalog Number:	Description:
Y4PC834	Standard 4-POINT® Dieless C-Head tool

Accessories:

Catalog Number:	Description:
PT10050733:	Plastic Carrying Case (included with tool)

Y500CTHS

6-Ton, Latch Head, L'IL CRIMP™
 Hydraulic Self-Contained, Hand Operated Tool

- Permanent functional D3 groove (no die needed)
- Used with W, X, and W-VT style dies
- 180° head rotation
- Enhanced clearance for tap connectors

For Use On:

Copper, Aluminum, ACSR, Steel, Copperweld, Alumoweld, 6201, 5005, Compressed, Compact, Stranded and Solid conductors

Installs Splices, Taps or Terminations:

- #8 - 600 kcmil Copper Str.
- #8 - 350 kcmil Flex
- #8 - 350 kcmil Aluminum



WDC4500 range taking die for #4 - 500 Cu Str. and #2 - 4/0 Cu Flex (sold separately)



WDA8300 range taking die for #8 - 300 Al, #6 - 400 Cu Str. and #2 - 4/0 Cu Flex (sold separately)



Specifications:

Output Force:	6 Tons
Tool Weight:	7.8 lbs
Size:	17.63" x 6.00" x 2.68"
Die Style:	W, W-VT and X styles
Warranty:	5 year limited warranty

Variations:

Catalog Number:	Description:
Y500CTHS	Standard Latch Head Tool

Accessories:

Catalog Number:	Description:
WDC4500:	Range taking die for #4 - 500 Cu Str. and #2 - 4/0 Cu Flex
WDA8300:	Range taking die for #8 - 300 Al, #6 - 400 Cu Str. and #2 - 4/0 Cu Flex
PT212851:	Metal Carrying Case (included with tool)

When used with UL Listed/CSA Certified YA, YS, YA-A, and YS-A series terminals and splices, connections are UL/CSA.

Range taking dies also for use on the YAV and YSV series.

Y60LW

60-Ton, Light Weight Remote Latch Head
Single Acting Light Weight Hydraulic Tool

- Remote power operated
- Used with BURNDY L, wide L style dies, and HPS/Fargo-equivalent 60 ton dies
- Base stand and metal carry case (for head only) included
- Side lift handle

For Use On:

Copper 300 - 2000 kcmil Str. Code Cable
Terminals: YA, YA-2N, YA-4N, YA-L, YA-2LN, YA-LB
Splices: YS, YST, YS-L, YS-T, YSP-T

Aluminum 250 - 2000 kcmil Str. Code Cable
Terminals: YA-A
Splices: YS-A, YS-AT

Transmission & Distribution Connectors:
Tension Sleeves:

- Copper: 1/0 str. - 1000 kcmil
- Aluminum: 1/0 str. - 2300 kcmil
- ACSR: 1/0 str. - 2156 (84/19 str.) kcmil
- Aerial:
 - Copper: 4/0 str. - 2500 kcmil
 - Aluminum: 3/0 str. - 2500 kcmil
- Types: YTS, YTN, YNS, YNA, YNT, YNTA, YNU, YDS, YDN, YCS, YCA, YCU



Wide L-dies (sold separately) can be used to save time and labor! Indicator marks on die set for ease of aligning connector properly. **L725W** shown.



Specifications:

Output Force:	60 Tons
Tool Weight:	43.0 lbs
Size:	13.00" x 8.12" x 8.12"
Die Style:	L style (standard or wide style); HPS/Fargo-equivalent 60 ton dies
Operating Pressure:	10,000 PSI
Warranty:	5 year limited warranty

Variations:

Catalog Number:	Description:
Y60LW	Light Weight Remote Latch Head Tool

Accessories:

Catalog Number:	Description:
Y60LWSTAND:	Metal stand for Y60LW (included with tool)
Y60LWCASE:	Steel carry case for Y60LW head (included with tool)

See Gas or Electric Pumps and Hydraulic Hoses; Pump Accessories for other necessary equipment.



Y60LW pictured on Y60LWSTAND (included with tool purchase)

Y46LWSBH

15-Ton, Remote Light Weight C-Head Remote Operated Hydraulic Tool

- 2" jaw opening
- Used with P dies; U dies with PUADP1 adapter (sold separately)
- Positive push button die locks
- Light weight scoop style open head design



For Use On:

Copper - #8 AWG Str. - 1500 kcmil

Code Cable, Navy Cable, Flexible, Extra Flexible
1/2" - 1" Ground Rods

Terminals, grounding:

to 500 kcmil; YGA, YGHA, YGF

Terminals, uninsulated:

#8 - 1500 kcmil; YA, YA-2N, YA-L, YA-LB, YA-TC,
YA-2LN, YAB-4N, YAV-L, YAV-RS, YA-TC-FX

Terminals, insulated:

#8 - 2/0; YAEV-L, YAEV-H, YAEV-RS, YAEV-RH

Splices:

#8 - 1500 kcmil; YS, YS-T, YS-L, YS-LB, YST,
YSP-T, YGS, YGHS

Taps:

#14 - 1000 kcmil; YH, YCHC
to 4/0 AWG; YC-C

Taps, grounding:

to 500 kcmil; YGHC-C, YGHP-C, YGHR-C

Aluminum - #8 AWG - 1250 kcmil

Code Cables

Terminals: YA-A, AYP, AYPO

Splices: YS-A, YS-AT, YRB

Taps: YFD, YFN, YFO, YFR

ACSR - See Overhead Transmission & Distribution
Sections H & I of the current BURNDY® Master
Catalog

Specifications:

Output Force:	15 Tons
Tool Weight:	14.6 lbs
Size:	14.93" x 5.12" x 3.12"
Die Style:	P style and U style with PUADP1 adapter
Operating Pressure:	10,000 PSI
Cycles:	10,000
Warranty:	5 year limited warranty

Variations:

Catalog Number:	Description:
Y46LWSBH	Standard Light Weight C-Head tool
Y46CLWSBH	Permanently molded head of 3/16" rubber included separate molded rubber boot for lower body and hydraulic coupler
Y46CLWSBHF	Y46CLWSBH (covered) tool with female coupler
Y46LWSBHF	Y46LWSBH tool with Female coupler (not rubber covered)

Accessories:

Catalog Number:	Description:
PUADP1:	U die adapter
P15K:	Cutter Die, max. diameter 1.2"
PT10054094:	Carry Bag (included with tool)

*See Hydraulic Pumps and Hydraulic Hoses;
Pump Accessories
for other necessary equipment.*

Y46LWBH

15-Ton, Light Weight Latch Head
Remote Operated Hydraulic Tool

- 2" ram travel
- Used with P dies; U dies with PUADP1 adapter (sold separately)
- Positive push button die locks
- Light weight latch head design

For Use On:

Copper - #8 AWG Str. - 1500 kcmil

Code Cable, Navy Cable, Flexible, Extra Flexible
1/2" - 1" Ground Rods

Terminals, grounding:

to 500 kcmil; YGA, YGHA, YGF

Terminals, uninsulated:

#8 - 1500 kcmil; YA, YA-2N, YA-L, YA-LB, YA-TC,
YA-2LN, YAB-4N, YAV-L, YAV-RS, YA-TC-FX

Terminals, insulated:

#8 - 2/0; YAEV-L, YAEV-H, YAEV-RS, YAEV-RH

Splices:

#8 - 1500 kcmil; YS, YS-T, YS-L, YS-LB, YST,
YSP-T, YGS, YGHS

Taps:

#14 - 1000 kcmil; YH, YCHC
to 4/0 AWG; YC-C

Taps, grounding:

to 500 kcmil; YGHC-C, YGHP-C, YGHR-C

Aluminum - #8 AWG - 1250 kcmil

Code Cables

Terminals: YA-A, AYP, AYPO

Splices: YS-A, YS-AT, YRB

Taps: YFD, YFN, YFO, YFR

ACSR - See Overhead Transmission & Distribution
Sections H & I of the current BURNDY® Master Catalog



Specifications:

Output Force:	15 Tons
Tool Weight:	12.5 lbs
Size:	15.50" x 5.12" x 3.12"
Die Style:	P style and U style with PUADP1 adapter
Operating Pressure:	10,000 PSI
Cycles:	10,000
Warranty:	5 year limited warranty

Variations:

Catalog Number:	Description:
Y46LWBH	Standard tool, Light Weight Latch Head
Y46LWBHF	Y46LWBH tool with Female coupler (not rubber covered)

Accessories:

Catalog Number:	Description:
PUADP1:	U die adapter
P15K:	Cutter Die, max. diameter 1.2"
PT10054094:	Carry Bag (included with tool)

*See Hydraulic Pumps and Hydraulic Hoses;
Pump Accessories
for other necessary equipment.*

Y45

15-Ton, Remote C-Head Remote Operated Hydraulic Tool

- Lifting eye
- Fully protected ram and die buttons
- Used with S dies; U dies with PT6515 adapter (sold separately)

For Use On:

Tension Sleeves:

- Copper #8 sol. - 500 kcmil
- Aluminum #6 sol. - 954 kcmil
- ACSR #4 - 795 (26/7) kcmil

Taps:

- Aluminum #14 - 954 (18/1) kcmil
- ACSR #6 - 795 (54/7) kcmil

Aerial Cable Connectors:

- Copper #6 str. - 1500 kcmil
- Aluminum #4 str. - 1000 kcmil

HYGROUND® Compression Grounding:

- Copper #6 - 500 kcmil
- 1/2" - 1" ground rods

Code Cable Terminals/Splices:

- Copper #8 - 1500 kcmil
- Aluminum #8 - 1000 kcmil

Code Cable Taps:

- Copper #14 - 1000 kcmil
- Aluminum #14 - 900 kcmil



Specifications:

Output Force:	15 Tons
Tool Weight:	15.75 lbs
Size:	14.25" x 7.25" x 2.62"
Die Style:	S style and U style with PT6515 adapter
Operating Pressure:	10,000 PSI
Cycles:	10,000
Warranty:	5 year limited warranty

Variations:

Catalog Number:	Description:
Y45	Standard Remote C-Head

Accessories:

Catalog Number:	Description:
PT6515:	Adapter for use with U die sets
PT6545:	Die carrying case for S and/or P die type dies. Holds eight (8) die sets. Dies sold separately.
433206016010:	Carry Case (included with tool)

*See Hydraulic Pumps and Hydraulic Hoses;
Pump Accessories
for other necessary equipment.*

Y750BHXT

12-Ton, Remote C-Head
Remote Operated Hydraulic Tool

- 1.65" jaw opening
- 355° head rotation
- Used with U style dies
- Exposed positive die lock buttons

For Use On:

Tension Sleeves

Copper	#8 sol. - 500 kcmil
Aluminum	#8 sol. - 587.2 kcmil
ACSR	#4 - 556.5 kcmil

Taps

Copper	#14 sol. - 500 kcmil
Aluminum	#8 - 500 kcmil

Aerial Cable

Copper	#6 - 500 kcmil
--------	----------------

Terminals & Splices

Copper	#8 - 750 kcmil
Aluminum	#8 - 750 kcmil
ACSR	#4 - 556 kcmil

HYGROUND® (Compression Grounding)

Copper	#8 - 500 kcmil
Ground Rods	1/2" - 1" diameter

Variations:

Catalog Number: Description:

Y750BHXT	Standard Remote C-Head tool
Y750CBHXT	Y750BHXT with molded rubber covering on head, body and hose fittings



Specifications:

Output Force:	12 Tons
Tool Weight:	10.3 lbs
Size:	12.88" x 5.25" x 3.12"
Die Style:	U style
Jaw Opening:	1.65"
Operating Pressure:	10,000 PSI
Warranty:	5 year limited warranty

Accessories:

Catalog Number:	Description:
PT294021:	Adjustable head grip for joining head to universal hot sticks
PT29291:	Steel die case for storage and protection of U dies
PT10054094:	Canvas carry bag (included with tool)

*See Hydraulic Pumps and Hydraulic Hoses;
Pump Accessories
for other necessary equipment.*

Y35BH

12-Ton, Remote C-Head Remote Operated Hydraulic Tool

- Lifting eye
- .95" jaw opening
- Uses U style dies
- Positive die lock buttons

For Use On:

Copper #8 str. - 500 kcmil code cable

Grounding Terminals:

YGH, YGHA, YGF

Grounding Splices:

YGS, YGHS

Copper #8 str. - 500 kcmil and up to 3/4" ground rod

Grounding Taps:

YGHC-C, YGHP-C, YGHR-C

Copper #8 str. - 750 kcmil code cable, N30 - N500 Navy cable, flexible, and extra flex

Terminals (Bare):

YA, YA-2N, YA-L, YA-LB, YA-2LN

Terminals (Insulated):

YAEV-L, YAEV-H, YAEV-RS, YAEV-RH

Splices to 400 kcmil only:

YS, YS-T, YS-L, YS-LB, YSV-L, YSM

Aluminum #8 str. - 750 kcmil code cable

Terminals:

YA-A, AYP, AYPO

Splices to 350 kcmil only:

YSA, YRB, YS-AT

ACSR: See Overhead Transmission & Distribution Sections H & I of the current BURNDY® Master Catalog



Specifications:

Output Force:	12 Tons
Tool Weight:	8.0 lbs
Size:	9.25" x 4.75" x 2.62"
Die Style:	U style
Jaw Opening:	.95"
Operating Pressure:	10,000 PSI
Cycles:	10,000
Warranty:	5 year limited warranty

Variations:

Catalog Number:	Description:
Y35BH	Standard Remote C-Head
Y35H	Y35BH head, PT294021 universal hot stick adapter, and steel carrying case
Y35B	Y35BH head, PT91 steel reinforced hydraulic hose, and an FP10 foot pump in a steel carrying case
Y35BH4	Permanent molded rubber head, 3/16" rubber for tool impact protection

Accessories:

Catalog Number:	Description:
PT2972:	Carry Case (included with tool)

*See Hydraulic Pumps and Hydraulic Hoses;
Pump Accessories
for other necessary equipment.*

Y39BH

12-Ton, Remote Latch Head
Remote Operated Hydraulic Tool

- Used with U style dies
- Positive push button die locks

For Use On:

Copper #6 AWG - 750 kcmil str. Code Cable
N30 - N650 Navy Cable, Flexible, and Extra Flexible
Terminals (Bare):

YA, YA-L, YA-LB, YGH, YGHA

Splices and Tees (Bare):

YS, YS-L, YS-LB, YS-T, YSP-T, YST

Copper AN or AIR #6 AWG - 4/0 str. Code Cable
AN6 - AN4/0 Aircraft Cable, Flexible, and Extra Flexible
Terminals (Bare):

YAV-L, YAV-RS

Splices (Bare):

YSV-L

Copper #8 AWG - 2/0 str. Code Cable
AN8 - AN2/0 Aircraft Cable, Flexible, and Extra Flexible
Terminals (Insulated):

YAEV-L, YAEV-RS, YAEV-RH

Copper #12 AWG sol. - 250 kcmil

Taps:

YC-C, YGHC-C, YGHP-C, YGHR-C, YH, YCHC

Aluminum #8 AWG - 750 kcmil Code Cable

Terminals:

YA-A

Splices:

YS-A, YS-AT, YRB

Aluminum #6 str. - 500 kcmil

Taps:

YFD, YFN, YFO



Specifications:

Output Force:	12 Tons
Tool Weight:	6.5 lbs
Size:	9.12" x 3.12" x 3.12"
Die Style:	U style
Operating Pressure:	10,000 PSI
Warranty:	5 year limited warranty

Variations:

Catalog Number:	Description:
Y39BH	Standard Remote Latch Head tool

Accessories:

Catalog Number:	Description:
PT2972:	Carry Case (included with tool)

*See Hydraulic Pumps and Hydraulic Hoses;
Pump Accessories
for other necessary equipment.*

Y644MBH

11-Ton, Dieless Remote Head Remote Operated Hydraulic Tool

- Dieless System
- Latch head design
- Range taking capabilities
- Infinitely rotatable head

For Use On:

Copper #6 - 1000 kcmil

Terminals:

YA-L, YA-2-LN, YA, YA-2N, YA-L-2TC, YAB-4N,
YA-L-TC, YA-2L, YA-4N

Splices:

YS-L, YS, YS-T

Aluminum #6 str. - 1000 kcmil

Terminals:

YA-A, YA-A-TN

Splices:

YS-A

HYPLUG™:

AYP, AYPO

See Expanded Range details in Reference Section

Variations:

Catalog Number: Description:

Y644MBH Standard Dieless Remote Latch Head



Specifications:

Output Force:	11 Tons
Tool Weight:	9.5 lbs
Size:	12.00" x 4.00" x 3.12"
Die Style:	Dieless
Operating Pressure:	10,000 PSI
Warranty:	5 year limited warranty

Accessories:

Catalog Number:	Description:
PT20719001	Steel Carry Case (included with tool)

*See Hydraulic Pumps and Hydraulic Hoses;
Pump Accessories
for other necessary equipment.*

Y81KFTMBH

6-Ton, 4-POINT® Dieless Head
Remote Operated Hydraulic Tool

- Dieless installation system
- Range taking capabilities
- Flip top design
- Incorporates Parker-type quick connect 3/8" male coupler
- 360° head rotation

For Use On:

Copper #8 -1000 kcmil

Terminals: YA, YA-L

Splices: YS, YS-L, YS-T, Y-R

Copper Flex #8 - 777.7 kcmil Flex (750 Nominal)

Terminals: YA-FX, YAV, YA-L-FX

Splices: YS, YSV-FXB

Aluminum #8 - 750 kcmil

Terminals: YA-A, YA-A-TN

Splices: YS-A

HYPLUG™: AYP, AYPO

See Expanded Range details in Reference Section

Variations:

Catalog Number: **Description:**

Y81KFTMBH Standard 4-POINT® Dieless Remote tool



Specifications:

Output Force:	6 Tons
Tool Weight:	8.5 lbs
Size:	13.88" x 5.38" x 2.00"
Die Style:	Dieless
Operating Pressure:	10,000 PSI
Warranty:	5 year limited warranty

Accessories:

Catalog Number:	Description:
PT10054094:	Canvas carry bag (included with tool)

*See Hydraulic Pumps and Hydraulic Hoses;
Pump Accessories
for other necessary equipment.*

Y4PC834MBH

6-Ton, 4-POINT®, Dieless Head Remote Operated Hydraulic Tool

- Dieless System
- Range taking capabilities
- C-shaped head design
- 360° head rotation

For Use On:

Copper

Terminals: YA, YA-L (#8-1000 kcmil)

Splices: YS-L, YS, YS-T, Y-R (#8-500 kcmil)

Copper Flex

Terminals: YA-FX, YAV, YA-L-FX (#8-777.7 Flex)

Splices: YS, YSV-FXB (#8-500 kcmil)

Aluminum

Terminals: YA-A, YA-A-TN (#8-750 kcmil)

Splices: YS-A (#8-350 kcmil)*

HYPLUG™: AYP, AYPO (#8-750 kcmil)

*Range limited due to jaw opening. For a more expanded range, please see the Y81KFTMBH.

See Expanded Range details in Reference Section



Specifications:

Output Force:	6 Tons
Tool Weight:	8.4 lbs
Size:	5.50" x 4.00" x 2.00"
Die Style:	Dieless
Operating Pressure:	10,000 PSI
Warranty:	5 year limited warranty

Variations:

Catalog Number: **Description:**

Y4PC834MBH Standard 4-POINT® Dieless Remote C-Head

Accessories:

Catalog Number: **Description:**

PT10054094: Canvas carry bag (included with tool)

*See Hydraulic Pumps and Hydraulic Hoses;
Pump Accessories
for other necessary equipment.*

Y34BH

9-Ton, Remote C-Head
Remote Operated Hydraulic Tool

- Molded rubber covering on head, body, and hose fittings
- Fast ram retraction
- Compact C-shaped forged head

For Use On:

Copper #4 - 500 kcmil code cable
Welding Cable: 350 kcmil
N40 to N500 Navy Cable
Flexible and Extra Flexible
#4 - 4/0 Aircraft Cable

HYLUG™ Terminals (Bare)
HYLINK™ Splices (Bare)

HYCRAB™ BURNDY® Network Connector System
Copper: #4 - 500 kcmil str.
Aluminum: #6 - 300 kcmil

Installation Die Charts for Y34BH

Copper Conductor		
Installation Die		Max. Conductor
Nest	Indenter	
B4CD	Y34PR	#4 Str.
B2CD	Y34PR	#2 Str.
B1CD	Y34PR	#1 Str.
B25D	Y34PR	1/0 Str.
B26D	Y34PR	2/0 Str.
B27D	Y34PR	3/0 Str.
B28D	Y34PR	4/0 Str.
B29D	Y34PR	250 kcmil
B30D	Y34PR	300 kcmil
B31D	Y34PR	350 kcmil
No Die Req'd	Y34PR	500 kcmil



Specifications:

Output Force: 9 Tons
Tool Weight: 8.0 lbs
Size: 16.75" x 3.00" x 3.00"
Die Style: B style nest & Y34 series indenter dies
Jaw Opening: 1.5"
Operating Pressure: 10,000 PSI
Warranty: 5 year limited warranty

Variations:

Catalog Number: Y34BH
Description: 9-Ton Remote C-Head

Catalog Number: Y34BH1
Description: Y34BH with 10' non-conductive hose attached at factory

*See Hydraulic Pumps and Hydraulic Hoses;
Pump Accessories for other necessary equipment.*

Aluminum Conductor		
Installation Die		Max. Conductor
Nest	Indenter	
B4CD	Y34PA	#6 Str.
B1CD	Y34PA	#4 Str.
B25D	Y34PA	#2 Str.
B26D	Y34PR5	#1 Str.
B27D	Y34PR5	1/0 Str.
B29D	Y34PR5	2/0 Str.
B30D	Y34PR5	3/0 Str.
B31D	Y34PR5	4/0 Str.
B32D	Y34PR5	250 kcmil
No Die Req'd	Y34PR11	300 kcmil

Y29BH

4.5-Ton, 6,000 PSI Remote Head
 Remote Operated Hydraulic Tool

- D series nest dies and Y29 series indenter dies
- Light weight, portable design
- C-shaped head; 1.2" jaw opening
- Easy placement/removal on continuous conductor lengths

For Use On:

Copper #8 - 2/0 AWG Code/Flex

Nylon Insulated Lugs:

(Connectors meet MIL-T-7928 requirements)
 YAEV-L, YAEV-H, YAEV-RS, YAEV-RH

Non-Insulated Lugs:

(Connectors meet MIL-T-7928 requirements)
 YAV-L, YAV-R, YAV-RS

Copper #8 - 4/0 AWG

Non-Insulated Splices:

(Type YSV-L connectors UL Listed/CSA Certified)
 YSM, YSV-L

Installation Die Chart for Y29BH
 (Connectors meet MIL-T-7928 requirements)

Non-Insulated Connectors		Maximum Conductor	Insulated Connectors	
Nest	Indenter	Size	Nest	Indenter
DV8L1	Y29PL	#8 AWG	DEV8L	Y29PLE1
DV6L	Y29PL	#6 AWG	DEV6L	Y29PLE1
DV4L	Y29PL	#4 AWG	DEV4L	Y29PLE1
DV2L	Y29PL	#2 AWG	DEV2L	Y29PLE
DV1L	Y29PL	#1 AWG	DEV1L	Y29PLE
DV25L	Y29PL	1/0 AWG	DEV25L	Y29PLE
DV26L	Y29PL	2/0 AWG	DEV26L	Y29PLE



Specifications:

Output Force:	4.5 Tons
Tool Weight:	5.0 lbs
Size:	10.75" x 3.00" x 1.25"
Die Style:	D style nest & Y29 series indenter dies
Jaw Opening:	1.15"
Operating Pressure:	6,000 PSI
Warranty:	5 year limited warranty

Variations:

Catalog Number:	Description:
Y29BH	4.5-Ton, 6,000 PSI Remote Head

Accessories:

*See Hydraulic Pumps and Hydraulic Hoses;
 Pump Accessories
 for other necessary equipment.*



PT30250 metal carrying case (included with tool)

Plier Hand Tools

Y10D for Nylon & Bare

Hand-held plier tool for #22 - #10 AWG

- One tool for both nylon insulated and bare connectors
- Precision machined wire cutter for aluminum and copper
- Heavy duty forged steel, rust resistant finish

Y1022 for Nylon, Vinyl & Bare

Hand-held plier tool for #22 - #10 AWG

- One step stripping #22 - #10 AWG
- Cuts common size mild steel, non-ferrous screws
- Crimps full range of Nylon, Vinyl and Bare terminals and splices

For Use On:

Y10D:

#22 - #10 AWG Nylon Insulated Terminals

Types: TN, TN-F, YAE-N, YAE-N-F, YAE-Z, YAEV, YAES, YAES-E

#22 - #10 AWG Nylon Insulated Splices

Types: SN, YSE-HN*, SNM, YSES, YSE-H*

#22 - #10 AWG Bare Uninsulated Terminals

Types: T, YAD, T-F, YAD-F, YAV, YAV-T-F, YAV-H*, YAV-H-F*, YAV-Z

#22 - #10 AWG Bare Uninsulated Splices

Types: YSV, YSV-H*

Y1022 all of above and also:

#22 - #10 AWG Vinyl Insulated Terminals

Types: TP, BA, TP-F, BA-EF, TP-Z, BA-EZ

#22 - #10 AWG Vinyl Insulated Splices

Types: SP, BS

*Conductor crimp only



Specifications: (Catalog Number: Y10D)

Size:	9.75" x 5.00" x 1.00"
Weight:	13.5 oz.
Warranty:	5 year limited warranty



Specifications: (Catalog Number: Y1022)

Size:	8.63" x 5.00" x .75"
Weight:	11 oz.
Warranty:	5 year limited warranty

YF2210FL

Dieless, Front Load, for Ferrules

Full cycle ratchet tool for insulated/bare ferrules

- Front load crimping position
- Dieless crimping without multiple grooves
- Full cycle ratchet mechanism
- Ratchet release lever



For Use On:

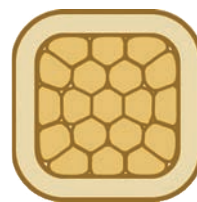
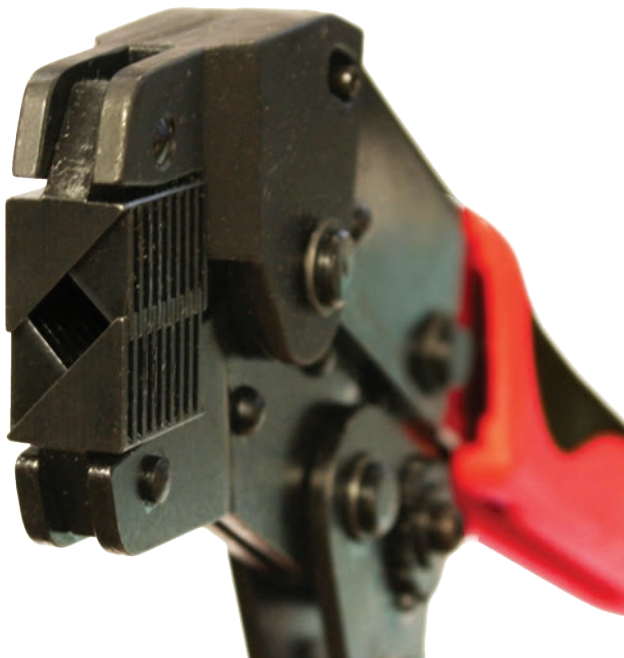
Catalog Number: YF2210FL

#22 - #10 AWG Insulated and Uninsulated (Bare) Ferrules

Types: YF, YF-UI Wire End Ferrules

Specifications:

Size:	7.75" x 2.38 x 1.00"
Die Style:	Dieless
Weight:	.8 lbs
Output Force:	1,600 lbs
Warranty:	5 year limited warranty



Crimp Profile

Close up of YF2210FL front load ratchet tool

YFTOOL Series

Ratchet Tools for Ferrules

Tools covering from #32 AWG to 250 kcmil

- Release mechanism
- Low handle force
- Ergonomic handle design
- Trapezoidal crimp profile unless noted
- For use on insulated or uninsulated ferrules

For Use On:

#32 - #6 AWG Insulated and Uninsulated (Bare) Ferrules
Tool: **YF3206TOOL** (Square crimp profile)

#26 - #10 AWG Insulated and Uninsulated (Bare) Ferrules
Tool: **YF2610TOOL**

#22 - #14 AWG Insulated and Uninsulated (Bare) Ferrules
Tool: **YF2214TOOL**

#22 - #10 AWG Insulated and Uninsulated (Bare) Ferrules
Tool: **YF2210TOOL**

#10 - #6 AWG Insulated and Uninsulated (Bare) Ferrules
Tool: **YF1006TOOL**

#8 - #1 AWG Insulated and Uninsulated (Bare) Ferrules
Tool: **YF0801TOOL**

#4 - #1 AWG Insulated and Uninsulated (Bare) Ferrules
Tool: **YF0401TOOL**

#1/0 - #3/0 kcmil Insulated and Uninsulated (Bare) Ferrules
Tool: **YF1/03/0TOOL**

#4/0 - #250 kcmil Insulated and Uninsulated (Bare) Ferrules
Tool: **YF4/0250TOOL**



Specifications:

Length:	Varies
Weight:	Varies from 1.02 to 1.80 lbs
Warranty:	2 year limited warranty

Y8MRB1

Full Cycle Ratchet Tool

Hand-held ratchet tool for #22 - 8 AWG

- Light weight
- Each indenter has unique identifying marks for inspectability
- Fully enclosed, protected ratchet mechanism does not allow the handles to be opened until full ratchet cycle is completed
- Inspection gauges (sold separately) available to check each groove

For Use On:

Catalog Number: Y8MRB1

#22 - 8 AWG Uninsulated (Bare) Terminals:

Types: T, YAD, T-F, YAD-F, YAV, YAV-L, YAV-T-F, YAV-Z

#22 - 8 AWG Uninsulated (Bare) Splices:

Types: YSV, YSV-L



Specifications:

Weight:	1.2 lbs
Size:	10.56" x 3.50" x 1.12"
Die Style:	Permanent Dies
Warranty:	5 year limited warranty

Accessories:

Catalog Number:	Description:
PG3951	Inspection gauge for #18 groove
PG3961	Inspection gauge for #14 groove
PG3971	Inspection gauge for #10 groove
PG3981	Inspection gauge for #8 groove

MR8 Series

Fully Protected Ratchet Mechanism

Full cycle ratchet tools for critical applications

- Fully enclosed, protected ratchet mechanism does not allow the handles to be opened until full ratchet cycle is completed
- Designed for critical applications such as nuclear-class 1E terminations, heavy duty industrial, aircraft
- Lightweight aluminum
- Easy groove identification with color-coded dies

For Use On:

Catalog Number: **Description:**
MR81A: #22 - #10 AN Copper Cable
 INSULUG™ terminals/splices
 YAE

MR89Q: #18 - #8 AN Copper Cable
 #22 - #10 AWG Sol. Cable
 #22 - #8 AWG Str. Cable
 YAV, YSV, T, T-F, YAD, YAD-F

MR833S1,
MR833T1: #18 - #10 MIL-W-5086 Str.
 YSE, YSE-H

MR8G96: #22 - #14
 TP, BA

MR8G98: #22 - #10
 YAV, T, YAD



Specifications:	
Size:	10.50" x 3.50" x 1.50"
Weight:	1.5 lbs
Die Style:	Permanent Dies
Warranty:	5 year limited warranty

Y10MRSA1

Ergonomic Full Cycle Ratchet

Hand-held tool using J-dies for #22 - #10 AWG

- Compact, narrow nose with scissor action
- Uses J-style die inserts (sold separately)
- High-strength steel frame, rubber covered comfort handles
- Ergonomic design requires less handle force

Catalog Number Y10MRSA1 For Use On:

with J1022NC1 die (sold separately):
#22 - #10 AWG Nylon Insulated Terminals/Splices
Types: YAE, YAE-N, YAE-N-F, YAE-Z

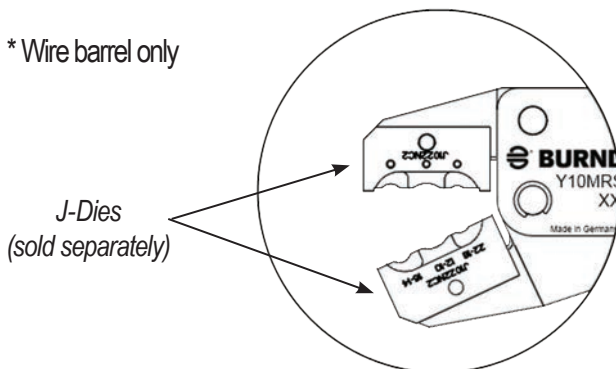
with J1022NC2 die (sold separately):
#22 - #10 AWG Nylon Insulated Terminals/Splices
Types: YAEV, YAEV-L, YAEV-H, YAEV-RH, YAEV-RS

with J1022NC3 die (sold separately):
#22 - #10 AWG Nylon Insulated Terminals/Splices
Types: TN, YAES, TN-F, YAES-F, SN, YSE-HN

with J1022NC4 die (sold separately):
#22 - #10 AWG Vinyl Insulated Terminals/Splices
Types: TP, BA, TP-F, BA-EF, TP-Z, BA-EZ, TP-LF, BA-EL, SP, BS

with J1022NC5 die (sold separately):
#22 - #10 AWG Uninsulated (Bare) Terminals/Splices*
Types: T, YAD, T-F, YAD-F, YAV, YAV-L, YAV-H, YAV-R, YAV-RS, YAV-T-F, YAV-H-F, YAV-Z, YSV, YSV-H, YSV-L

* Wire barrel only



Specifications:

Size:	10.75" x 3.12" x 1.88"
Die Style:	J style
Weight:	1.3 lbs
Warranty:	5 year limited warranty

Accessories:

Catalog Number:	Description:
J1022NC1:	J die set see detail under For Use On section
J1022NC2:	J die set see detail under For Use On section
J1022NC3:	J die set see detail under For Use On section
J1022NC4:	J die set see detail under For Use On section
J1022NC5:	J die set see detail under For Use On section

MRE1022 Series

Ergonomic Full Cycle Ratchet

Hand-held tools for #22 - #10 AWG Nylon/Vinyl & Bare

- Ratchet mechanism does not allow handles to open until full cycle is complete
- Stop plate ensures proper location for consistent reliable connection
- Die Inspection Gauges available (sold separately)
- Easy groove identification with color coded dies
- Ratchet release lever in case of misalignment

For Use On:

Catalog Number: MRE1022B

#22 - #10 AWG Uninsulated (Bare) Terminals/Splices

Types: T, YAD, T-F, YAD-F, YAV, YAV-H, YAV-R, YAV-T-F, YAV-H-F, YAV-Z, YSV, YSV-H

Catalog Number: MRE1022NV

#22 - #10 AWG Nylon & Vinyl Insulated Terminal/Splices

Types: TP, BA, TP-F, BA-EF, TP-Z, BA-EZ, TP-LF, BA-EL, SP, BS, TN, YAES, TN-F, YAES-F, SNM*, YSES*, YAE-N, YAE-N-F, YAE-Z, YSE-HN, YSE-H, YAEV

*Excludes #10 size



Specifications:

Weight:	1.3 lbs
Size:	10.50" x 3.00" x 1.00"
Width:	3"
Die Style:	Permanent Dies
Warranty:	5 year limited warranty

Accessories:

Catalog Number:	Description:
PG4032R:	Die Inspection Gauge for #22 - #14 AWG for MRE1022B
PG4031R:	Die Inspection Gauge for #12 - #10 AWG for MRE1022B
PG4061:	Die Inspection Gauge for #22 - #18 AWG (Red) for MRE1022NV
PG4071:	Die Inspection Gauge for #16 - #14 AWG (Blue) for MRE1022NV
PG4081:	Die Inspection Gauge for #12 - #10 AWG (Yellow) for MRE1022NV



Close-up
MRE1022NV

MR Series

Full Cycle Ratchet

Hand-held tools for #22 - #10 AWG

- Ratchet mechanism does not allow handles to open until full cycle is complete
- Easy groove identification with color coded dies
- Compact, narrow nose
- Comfort grip handles
- Ratchet release lever in case of misalignment

For Use On:

Catalog Number: MR15

#22 - #10 AWG Vinyl Insulated Terminals/Splices

Types: TP, BA, TP-F, BA-EF, TP-Z, BA-EZ, TP-LF, BA-EL, SP, BS

Catalog Number: MR18

#22 - #10 AWG Nylon Insulated Terminals/Splices

Types: TN**, TN-F, YAES, YAES-F, SN, SNM, YSE-HN, YSES

Catalog Number: MR20

#22 - #10 AWG Uninsulated (Bare) Terminals/Splices

Types: T, YAD-F, T-F, YAV-H*, YAV, YAV-H-F*, YAD, YAV-T-F, YSV, YSV-H*

*Conductor crimps only

**Excludes #10 Size



Specifications:

Size:	8.88" x 6.00" x 2.50"
Weight:	1.1 lbs
Warranty:	5 year limited warranty

Accessories:

Catalog Number:	Description:
MR15DIESETD1:	MR15 interchangeable die set
MR18DIESETD1:	MR18 interchangeable die set
MR20DIESETD1:	MR20 interchangeable die set

MR4C

Full Cycle Ratchet

Hand-held tool for #9 - #4 AWG Bare Terminals/ Splices

- Reinforced heavy duty back with high strength aluminum body
- Fully protected ratchet mechanism does not allow handles to open until full cycle is completed
- Inspection gauges available to check each groove (sold separately)
- Spring loaded indenter jaw, keeps jaws closed

Catalog Number: MR4C

For Use On:

#9 - #4 AWG Uninsulated (Bare) Terminals/Splices

Types: YAV-L, YA-L, YSV, YS-L



Specifications:

Length:	11.75" x 3.62" x 1.00"
Weight:	2.3 lbs
Die Style:	Permanent Dies
Warranty:	5 year limited warranty

Accessories:

Catalog Number:	Description:
PG1211:	Die Inspection Gauge for #9 - #8 AWG groove
PG1251:	Die Inspection Gauge for #6 AWG groove
PG1331:	Die Inspection Gauge for #4 AWG groove

Y1MRTC

Rotating Die Full Cycle Ratchet

For #8 - #1 Copper HYDENT™ Terminals, Splices,
#6 - #6 Thin-Wall C-Taps

- Die index embossment
- Rotating die with color coding to match connectors
- Ratchet mechanism with release in case of misalignment



For Use On:

See charts for details

#8 - #1 AWG Uninsulated (Bare) Terminals and Splices

Types: YA, YAV, YS, YSV

Thin Wall C-Taps:

YC10L12, YC8L12, YC6L12, YC4L12

Specifications:

Size:	9.88" x .75" x 2.75"
Weight:	1.7 lbs
Die Style	Rotating Die Wheel
Warranty:	5 year limited warranty

Copper Terminals & Splices				
Copper Wire Size	Connector Catalog Types	Die Index # (Color)	# Crimps per Barrel Length	
			Std	Long
#8 AWG Code & Flex	YA8C- YS8C- YAV8C- YSV8C-	49 (Red)	1	2
#6 AWG Code	YA6C- YS6C-	7 (Blue)	1	2
#6 AWG Code & Flex	YAV6C- YSV6C-			
#4 AWG Code	YA4C- YS4C-	8 (Grey)	2	4
#4 AWG Code & Flex	YAV4C- YSV4C-			
#3 AWG #2 Sol.	YA3C- YS3C-	9 (White)	2	4
#2 AWG Code	YA2C- YS2C-	10 (Brown)**	2	4
# 2 AWG Code & Flex	YAV2C- YSV2C-			
#1 AWG Code	YA1C- YS1C-	11 (Green)**	2	4

Copper C-Tap Connectors				
Catalog Number	Wire Size Cu Str. AWG		Die Index # (Color)	# of Crimps
	Run	Tap		
YC10L12	14	16-14	49 (Red)	1
	12	16-14		
	10	16		
YC8L12	10	10	7 (Blue)	1
	8	12		
YC6L12	8	10-8	8 (Grey)	1
	6	12-10		
YC4L12	6	8-6	10 (Brown)	2
	5, 4	12-8		

Variations:

Catalog Number:	Description:
Y1MRTC	Standard tool only
Y1MRKIT	Y1MRTC tool, sturdy metal carrying case and select terminals/splices
Y1MRTCKIT	Y1MRTC tool, sturdy metal carrying case, selected terminals and YC4L12 Thin-Wall C-Tap

**Die Index 10/Brown and 11/Green use the same die wheel crimp groove.

Y122CMR

Ergonomic Full Cycle

For #12 - #2 AWG Stranded, Solid, and Flex

- Overmolded comfort grip handles
- Easy groove identification with color coded dies
- UL Listed/CSA Certified connections when used with recommended BURNDY terminals/splices
- Die index embossment for all 6 wire ranges
- Emergency release mechanism in case of misalignment or mistaken die choice
- Two different kits are also available with a selection of connectors in a sturdy metal carrying case (Y122CMRKIT and Y122CMRCIKIT)



Accommodates Copper Terminals and Splices				
Copper Wire Size	Connector Catalog Types	Die Index # (Color Code)	Number of Crimps	
			Standard Barrel	Long Barrel
#10 - #12 AWG Sol. & Str.	T10-, YAD10-, YAV10, YAZ10, YAZV10-	-- (Yellow)	1	N/A
#8 AWG Code & Flex	YA8C-, YAV8C-, YAZ8C-, YAZV8C-, YS8C, YSV8C-	49 (Red)	1	2
#6 AWG Code	YA6C-, YAZ6C-, YS6C-	7 (Blue)	1	2
#6 AWG Code & Flex	YAV6C-, YAZV6C-, YSV6C-			
#4 AWG Code	YA4C-, YAZ4C-, YS4C-	8 (Gray)	2	4
#4 AWG Code & Flex	YAV4C-, YAZV4C-, YSV4C-			
#3 AWG Code & #2 AWG Sol	YA3C-, YS3C	9 (White)	2	4
#2 AWG Code	YA2C-, YAZ2C-, YS2C-	10 (Brown)	2	4
#2 AWG Code & Flex	YAV2C-, YAZV2C-, YSV2C-			

Specifications:	
Catalog Number	Y122CMR
Size:	10.50" x 3.00" x 1.00"
Weight:	1.3 lbs
Die Style:	Rotating Die Wheel
Warranty:	5 year limited warranty

Copper C-Tap Connectors				
Catalog Number	Wire Size Cu Str. AWG		Die Index # (Color)	# of Crimps
	Run	Tap		
YC10L12	14	16-14	49 (Red)	1
	12	16-14		
	10	16		
YC8L12	10	10	7 (Blue)	1
	8	12		
YC6L12	8	10-8	8 (Grey)	1
	6	12-10		
YC4L12	6	8-6	10 (Brown)	2
	5, 4	12-8		

Accessories:

Die Inspection Gages are available and sold separately. See table to the right for information.

Gage Catalog Number	AWG Size	Die Index	Color Code
PG4091	#10 - #12	--	Yellow
PG4092	#8	49	Red
PG4093	#6	7	Blue
PG4094	#4	8	Gray
PG4095	#3	9	White
PG4096	#2	10	Brown

N-49

Y122CMR Kits

Y122CMR Tool with select connectors For #12 - #2 AWG Stranded, Solid, and Flex

- Overmolded comfort grip handles
- Easy groove identification with color coded dies
- UL Listed/CSA Certified connections when used with recommended BURNDY terminals/splices
- Die index embossment for all 6 wire ranges
- Two kits available that include popular connectors in a sturdy metal carrying case
- **Y122CMRKIT** offers select LONG barrel connectors
- **Y122CMRCIKIT** offers select STANDARD barrel connectors



Y122CMRKIT shown

Y122CMRKIT Contents: (all connectors are LONG Barrel)		
Catalog Number	Description	Qty
Y122CMR	HYTOOL™ Full Cycle Ratchet Tool	1
Y1MRKITCASE	Metal Case for Tool and Connectors	1
YAV102TC14	#10 Sol & Str, 1/4" Stud, 2 Holes	15
YAZV10TC14	#10 Sol & Str, 1/4" Stud, 1 Hole	15
YAZV102TC14	#10 AWG, 1/4" Stud, 2 Holes	15
YAZ8CTC14	#8 AWG, 1/4" Stud, 1 Hole	15
YAZ8C2TC38	#8 AWG, 3/8" Stud, 2 Holes	15
YAZ6CTC14	#6 AWG, 1/4" Stud, 1 Hole	15
YAZ6C2TC38SL	#6 AWG, 3/8" Stud, 2 Slotted Holes	15
YAZ6C2TC14	#6 AWG, 1/4" Stud, 2 Holes	15
YAZV6C2TC14FX	#6 Code & Flex, 1/4" Stud, 2 Holes	15
YAZ6C2TC38	#6 AWG, 3/8" Stud, 2 Holes	15
YAZ4C2TC38	#4 AWG, 3/8" Stud, 2 Holes	15
YAZ3C2TC14	#3 AWG, 1/4" Stud, 2 Holes	15
YAZ3C2TC38SL	#3 AWG, 3/8" Stud, 2 Slotted Holes	15
YAZ2C2TC38	#2 AWG, 3/8" Stud, 2 Holes	15
YAZ2C2TC38SL	#2 AWG, 3/8" Stud, 2 Slotted Holes	15
YAZV2C2TC14FX	#2 Code & Flex, 1/4" Stud, 2 Holes	15
Y122MRSOMI	Safety Operating & Maintenance Instructions	1

Specifications:

Size:	18.00" x 7.50" x 2.00"
Weight:	13.7 lbs
Die Style	Rotating Die Wheel
Warranty:	5 year limited warranty

Y122CMRCIKIT Contents: (all connectors are STANDARD Barrel)		
Catalog Number	Description	Qty
Y122CMR	HYTOOL™ Full Cycle Ratchet Tool	1
Y1MRKITCASE	Metal Case for Tool and Connectors	1
YAV10T3	#10 Sol & Str, 1/4" Stud, 1 Hole	15
YA8CL	#8 AWG, #10 Stud, 1 Hole	15
YA8CL1	#8 AWG, 1/4" Stud, 1 Hole	15
YA6CL	#6 AWG, 1/4" Stud, 1 Hole	15
YAV6CLTC14FX	#6 AWG & Flex, 1/4" Stud, 1 Hole	15
YA4CL	#4 AWG, 1/4" Stud, 1 Hole	15
YAV4CLTC516FX	#4 AWG & Flex, 5/16" Stud, 1 Hole	15
YA2CL	#2 AWG, 5/16" Stud, 1 Hole	15
YAV2CLTC516FX	#2 AWG & Flex, 5/16" Stud, 1 Hole	15
YSV10	#10 Sol & Str Splice	15
YS8CL	#8 AWG Splice	15
YS6CL	#6 AWG Splice	15
YS4CL	#4 AWG Splice	15
YS2CL	#2 AWG Splice	15
Y122MRSOMI	Safety Operating & Maintenance Instructions	1

N-50

Accessories:

Die Inspection Gages are available and sold separately. See **Y122CMR** catalog page for details.

M8ND

Full Cycle Ratchet

Hand-held tools for #26 - #8 AWG Terminals/Splices

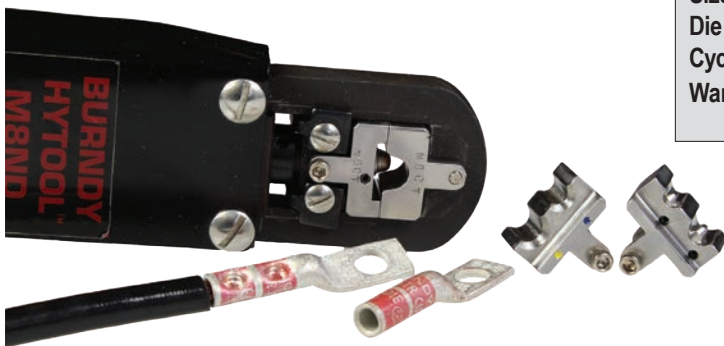
- Ratchet mechanism does not allow handles to open until full cycle is complete
- Fully protected ratchet mechanism
- Uses standard BURNDY N style dies (sold separately)
- Easy groove identification with color coded dies

Catalog Number M8ND For Use On:

#26 - #8 AWG Terminals/Splices

Terminal Types: YAD, BA-E, YAD-F, BA-EF, YAE, BA-ES, YAE-F, BA-EZ, YAE-Z, BA-EL, YAES, YAEV-H, YAEV-L, YAV, YAV-F, YAV-H, YAV-H-F

Splice Types: YSV, YSM, YSV-H, YRV-L



M8ND shown with N8CT die set installed. (Dies sold separately.)

Specifications:

Weight:	1.8 lbs
Size:	10.88" x 2.00" x .88"
Die Style:	N style
Cycles:	10,000
Warranty:	5 year limited warranty

MRC840 Series

Mechanical Rotating Crimp Tool

For #8 - 4/0 AWG Uninsulated (Bare) Terminals/
Splices

- Heat treated steel jaws
- Spring loaded mechanism locks die wheel into position
- Multiple crimp selection with rotatable die wheels
- Die index embossment for inspectability

For Use On:

Catalog Number: MRC840

#8 - #4/0 AWG Copper Terminals/Splices

Types: YA, YA-L, YS, YS-L

Catalog Number: MRC840AL

#8 - #4/0 AWG Aluminum Terminals/Splices

Types: YA-A, YS-A



Specifications:

Size:	26.00" x 8.00" x 1.50"
Weight:	8.3 lbs
Die Style:	Rotating Die Wheel
Warranty:	5 year limited warranty

MY28/MY29 Series

Dieless Mechanical Compression Tools

#8 Str. - 250 kcmil Copper; #8 Str. - 4/0 Str. Aluminum

- Easy to adjust nest die with knurled steel knob and machine threads
- Rugged tool design with heavy duty forged steel with reinforced back and handles
- Bench mount adapter (sold separately) available

For Use On:

Catalog Numbers: MY293, MY293C (covered handles), MY293CF (fully covered)

#8 Str. - 250 kcmil Copper commercial (code) cable
30 Navy - 250 Navy Copper Navy cable
#8 Str. - 4/0 Str. Aluminum commercial (code) cable
Types (Copper): YA, YA-L, YS-L
Types (Aluminum): YA-A, YS-A

Catalog Numbers: MY2911, MY2911C (covered handles), MY29UNIVERSALKIT (MY2911 tool with select connectors)

#8 Str. - 250 kcmil Copper commercial (code) cable
30 Navy - 250 Navy Copper Navy cable
#8 Str. - 4/0 Str. Flexible copper mine machine cable
Types (Copper): YA, YA-L, YS, YAV-FX, YS-L, YAV-L, YSV-L

Catalog Number: MY28

#8 Str. - 4/0 Str. Copper aircraft cable
Types (Copper): YAV-L, YSV-L

Catalog Number: MY284

#8 Str. - 4/0 Str. Aluminum aircraft cable
Types (Aluminum): YAV-A-L, YSV-A-L, YAV-A-R

Catalog Number: MY286

#8 Str. - 2/0 Str. Copper aircraft cable (flexible)
Types (Copper): Nylon Insulated: YAE-L, YAEV-RS, YAEV-H, YAEV-RH



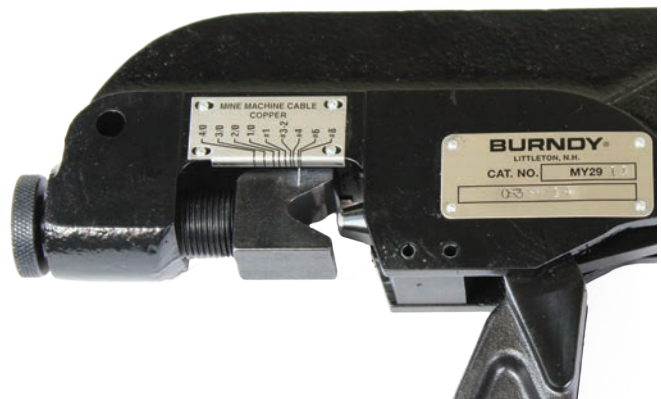
Specifications:

Weight:	8.0 lbs
Size:	22.65" x 4.88" x 1.12"
Die Style:	Dieless
Cycles:	10,000
Warranty:	5 year limited warranty

Accessories:

Catalog Number:	Description:
BMVBCHMT:	Bench Mount Adapter

Close-up of dieless mechanism



OH25

Dieless Full Cycle Ratchet

Installs Service Entrance Splice Connectors #10 - 1/0

- Ratchet mechanism does not allow handles to open until full cycle is complete
- Easy, one-hand operation incrementally closes jaws with each handle stroke
- Spring-loaded comfort grip handles
- Forged steel jaws and stainless steel indenter

Catalog Number OH25 For Use On:

Conductor Range: #10 - 1/0

5/8" Service Entrance Sleeves:

INSULINK™ Type ES (insulated) #10 - 1/0 Str.

LINKIT™ Type YSU (bare) #8 - 1/0 Str.

5/8" Neutral Tension Sleeves HYSPLICE™

Types: YS-S, YCS-R, YDS-AT (#4 - 1/0)

AYP Type HYPLUG™ #6 - 1/0 Str.



Specifications:

Handle Force:	50 lbs max.
Force Developed:	6,000 lbs max.
Size:	12.25" x 3.75" x 1.50"
Weight:	2 lbs. 11 oz.
Die Style:	Dieless
Warranty:	5 year limited warranty

Accessories:

Catalog Number:	Description:
PT4583:	Leather Holster
PT8504:	Go/No-Go Gauge; used to check crimp dimensions



N-54

PT4583 Leather Holster
(sold separately; shown with
OH25 tool)

OUR840

840 POPPER™ HYTOOL™
Overhead/Underground Applications; Full Cycle Ratchet

- Allows proper crimping of sleeves/terminations in underground applications
- Uses X dies for reduced handle force and W dies for fewer number of crimps
- UL Listed connections when used with BURNDY Listed connectors and color-coded X dies



Catalog Number OUR840 For Use On:

See charts for details

Selected Applications

Copper conductors #8 AWG - 250 kcmil

Aluminum conductors #8 AWG to 4/0 AWG

Specifications:

Handle Force: 8 lbs max.
Force Developed: 8,000 lbs max.
Die Style: W and X style dies
Size: 13.00" x 3.75" x 1.50"
Weight: 2 lbs. 14 oz.
Warranty: 5 year limited warranty

Accessories:

Catalog Number: Description:
XOH25: Nest/Indenter die set for OUR840
W28K: Cutter die for #4 - 4/0 ACSR, Copper, Aluminum
PT4583: Leather Holster made from top grain cowhide saddle leather with large grommet
OUR840WC: Metal carrying case with die tray - holds OUR840 tool and up to eleven (11) X dies (sold separately)

Copper Terminals & Splices					
Copper Wire Size	Connector Catalog Types	Die	Die Index # (Color)	# Crimps per Barrel Length	
				Std	Long
#8 AWG Str.	YA / YS 8C-	X8CRT	49 (Red)	1	2
#6 AWG Str. #5 AWG Str.	YA / YS 6C-, YA / YS 5C-	X5CRT	7 (Blue)	1	2
#4 AWG Str.	YA / YS 4C-	X4CRT	8 (Gray)	1	2
#2 AWG Str.	YA / YS 2C-	X2CRT	10 (Brown)	1	2
#1 AWG Str.	YA / YS 1C-	X1CRT	11 (Green)	1	2
1/0 AWG Str.	YA / YS 25-	X25RT	12 (Pink)	2	4
2/0 AWG Str.	YA / YS 26-	X26RT	13 (Black)	2	4
3/0 AWG Str.	YA / YS 27-	X27RT	14 (Orange)	3	6
4/0 AWG Str.	YA / YS 28-	X28RT	15 (Purple)	3	6
250 kcmil	YA / YS 29-	X29RT	16 (Yellow)	4	8
Aluminum Terminals & Splices					
Aluminum Wire Size	Connector Catalog Types	Die	Die Index # (Color)	# Crimps	
#8 AWG Str.	YA / YS 8CA	X8CART	374 (Blue)	2	
#6 AWG Str.	YA / YS 6CA-	X6CART	346 (Gray)	2	
#4 AWG Str.	YA / YS 4CA-	X4CART	375 (Green)	3	
#2 AWG Str.	YA / YS 2CA-	X2CART	348 (Pink)	4	
#1 AWG Str.	YA / YS 1CA-	X1CART	471 (Gold)	3	
1/0 AWG Str.	YA / YS 25A-	X25ART	296 (Tan)	4	
2/0 AWG Str.	YA / YS 26A-	X26ART	297 (Olive)	4	
3/0 AWG Str.	YA / YS 27A-	X27ART	467 (Ruby)	4	
4/0 AWG Str.	YA / YS 28A-	X28ART	298 (White)	6	

MD6 Series

Hand-Operated HYTOOL™

Installs full range of connectors #14 - 4/0

- Uses BURNDY® W dies
- Spring loaded positive lock die retainer buttons
- Multiple variations available

For Use On:

Copper, Aluminum, ACSR, Steel, Copperweld, Alumoweld, 6201, 5005, Compressed, and Compact Conductors

Taps:

Copper: #10 sol. to 2/0 str.

Aluminum & ACSR: #14 sol. to 4/0 ACSR

Stirrups:

#6 to 4/0 ACSR

Overhead Full Tension Deadends, Full Tension Splices and Terminals:

#10 str. to 4/0 ACSR

Installs Splices, Taps or Terminations:

#8 to 500 kcmil Copper Stranded (YA, YA-L, YS, YS-L)

#8 to 350 kcmil Copper Flex

#8 to 350 kcmil Aluminum (YA-A, YS-A)

Variations:

Catalog Number:	Description:
MD6	Permanent BG (5/8) and D3 grooves; with WO die (sold separately) can install the CABLELOK CRIMPIT™ and HYCRIMP™ tap connectors
MD68	Permanent O and D3 grooves; with WBG die (sold separately) can install the CABLELOK CRIMPIT™ and HYCRIMP™ tap connectors
MD66	Snub-nose, permanent D3 groove only
MD637	Permanent 161, 162, 163, 171 dies in jaw (J, M & P, T & X)
MD638	Permanent K, BG, C dies in jaw
MD6K	Snub-nose, accepts KEARNEY™ type O dies; using KWADP adapter (sold separately) will accept BURNDY W and X dies

Hotstick Tools Available - Contact Customer Service



Specifications:

Crimp Force:	4.5 Tons
Life Cycle:	Tested over 90,000 cycles with no adjustments or part replacement
Length:	25.50" x 4.50" x 2.00"
Weight:	6.0 lbs
Die Style:	W and X styles
Warranty:	5 year limited warranty

Variations (continued):

Catalog Number: MD64	Description: Permanent BG (5/8) and D3 grooves; straight fiberglass handles 24" long; fiberglass rated 100kV per foot for 5 min.
MD614	Permanent BG (5/8) and D3 grooves; straight fiberglass handles 19" long with grips; fiberglass rated 100kV per foot for 5 min.
MD612	Permanent O and D3 grooves; straight fiberglass handles 24" long; fiberglass rated 100kV per foot for 5 min.

Accessories:

Catalog Number: WBG:	Description: Common die set for MD68, MD612
WO:	Common die set for MD6, MD64, MD614
KWADP:	Adapter to use BURNDY W and X dies with MD6K variation
WDIETREE:	W die holder for 6 die sets

MD7 Series

Hand-Operated HYTOOL™
Installs full range of connectors #14 - 4/0

- Accepts W and X Dies
- Ergonomic, one-piece composite polymer handles
- Nickel plated jaws and jaw links

For Use On:

Copper, Aluminum, ACSR, Steel, Copperweld, Alumoweld, 6201, 5005, Compressed, and Compact Conductors

Taps:

Copper: #10 sol. to 2/0 str.
Aluminum & ACSR: #14 sol. to 4/0 ACSR

Stirrups:

#6 to 4/0 ACSR

Overhead Full Tension Deadends, Full Tension Splices and Terminals:

#10 str. to 4/0 ACSR

Installs Splices, Taps or Terminations:

#8 to 500 kcmil Copper Stranded (YA, YA-L, YS, YS-L)
#8 to 350 kcmil Copper Flex
#8 to 350 kcmil Aluminum (YA-A, YS-A)

Variations:

Catalog Number:	Description:
MD7	Permanent BG (5/8) and D3 grooves; with WO die (sold separately) can install the CABLELOK CRIMPIT™ and HYCRIMP™ tap connectors
MD78	Permanent O and D3 grooves; with WBG die (sold separately) can install the CABLELOK CRIMPIT™ and HYCRIMP™ tap connectors
MD76	Snub-nose, permanent D3 groove only



Specifications:

Output Force:	4.5 Tons
Size:	25.00" x 4.50" x 2.00"
Weight:	7.0 lbs.
Die Style:	W and X styles
Life Cycle:	Tested over 90,000 cycles with no adjustments or part replacement
Warranty:	5 year limited warranty

Accessories:

Catalog Number:	Description:
WBG:	Common die set for MD78
WO:	Common die set for MD7, MD76
WDIETREE:	W die holder for 6 die sets

MD734R

Hand-Operated POSI-PRESS™

Hand-operated full cycle ratchet tool

- Full stroke ratchet mechanism
- Ergonomical one-piece composite polymer handles
- Allows use of complete W-VT, W-RT and X-RT line of BURNDY dies with die embossment

For Use On:

Copper Lugs/Splices #8 - 500 kcmil:

Types: YA, YA-L, YA-L-TC, YA-L-NT, YS-L, YS, YST, YA-TC

Copper Lugs/Splices #8 - 350 kcmil Flex

Types: YAV-L-TC-FX, YA-LB, YA-TC-FXB, YSV-L, YAV-L-NT-FX, YAV-L-FX, YAV-FXB

Copper Battery Lugs #8 - 350 kcmil Flex

Type: YAG-TC-LD

Thin Wall C-Taps #12 - 3/0 AWG

Type: YC-L

Variations:

Catalog Number:	Description:
MD734R	POSI-PRESS™ Full Cycle Ratchet Tool
MD734RC	MD734R tool with EPDM rubber covering
MD734RKIT1	MD734R tool, metal carrying case and all dies for #8 - 500 kcmil copper HYDENT™ and C-Taps for #12 - 3/0 AWG
MD734	Supplied <u>without</u> the ratchet mechanism
MD734KIT1	MD734 tool (no ratchet mechanism), metal carrying case and all dies for #8 - 500 kcmil copper HYDENT™ and C-Taps for #12 - 3/0 AWG



Specifications:

Crimp Force:	4.5 Tons
Length:	26.00" x 4.50" x 2.00"
Width:	8.00" at handles; 4.50" at jaws
Die Style:	W-VT, W-RT, and X-RT Styles
Handle Material:	Reinforced composite polymer
Warranty:	5 year limited warranty

Accessories:

Catalog Number:	Description:
PT49521:	Metal carry case (sold separately)
PT4925:	Canvas bag (sold separately)
WDIETREE:	W die holder for 6 sets of dies (sold separately)

Y46OEM12T

12 Ton Remote Operated HYPRESS™
Designed for Specific OEM Applications; Bench Mount

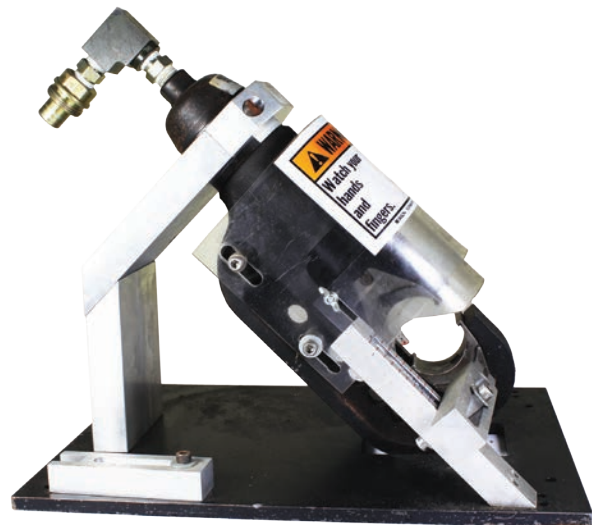
- Head mounted at 45° angle
- U dies for copper and aluminum
- Forged steel tool, precision machined components
- Coupler at 90° angle

For Use On:

Copper Terminals (Bare) #6 - 750 kcmil Code/Navy:
Types: YA, YA-2N, YA-L, YA-LB, YA-TC, YA-2LN, YAB-4N, YAV-L, YAV-RS, YA-TC-FX

Copper Terminals (Insulated) #8 - 2/0 Flex/Extra Flex
Types: YAEV-L, YAEV-H, YAEV-RS, YAEV-RH

Aluminum Terminals #6 - 750 kcmil Code
Types: YA-A, AYP, AYPO



Specifications:

Operating Pressure:	8,800 PSI
Force Developed:	12 Tons
Weight:	34.5 lbs
Size:	14.00" x 12.25" x 10.00"
Die Style:	U Dies (with PUADP-1 adapter, included)
Warranty:	2 year limited warranty

Variations:

Catalog Number:	Description:
Y46OEM12T	Y46OEM12T tool only
Y46OEM12TKIT	Kit complete with Y46OEM12T tool, Y8AC9 pump, and PT2990010 hose
Y46OEM12TKITFC	Kit complete with Y46OEM12TKIT (see above) and YACFC foot switch
Y46OEM12TKIT1	Kit complete with Y46OEM12TKIT (see above), Y46OEMGUARD, Y46OEMLOCATOR, and 12TONP1
Y46OEM12TKIT1FC	Kit complete with Y46OEM12TKIT1 (see above) and YACFC foot switch

Accessories:

Catalog Number:	Description:
Y8AC9:	5/8 HP Electric Hydraulic Pump 8,800 PSI
PT2990010:	10 foot long hydraulic hose
YACFC:	Foot switch for Y8AC9 pump
Y46OEMGUARD:	Clear safety shield
Y46OEMLOCATOR:	Adjustable connector locator
12TONP1:	Factory installed stroke limiter
UDIEKITCU:	U die kit complete with 15 U die sets for crimping #6 AWG - 750 kcmil copper, provided in one metal storage case
UDIEKITAL:	U die kit complete with 15 U die sets for crimping #6 AWG - 750 kcmil aluminum, provided in one metal storage case

Y46OEM11T

11 Ton Remote Operated HYPRESS™ Designed for OEM Applications, Bench Mounted

- Same crimp profile as 644 Series tools with dedicated P644 die set permanently affixed
- “1 Crimp” technology for most long and standard length barrel terminals
- Expanded range taking capacity

For Use On:

Copper Terminals #6 - 750 kcmil Code/Navy (Terminals):
Types: YA-L, YA-2LN, YA, YA-2N, YA-L-2TC,
YAB-4N, YA-L-TC, YA-2L, YA-4N

Copper Terminals #6 - 500 kcmil Code/Navy (Splices):
Types: YS-L, YS-T, YS

Aluminum #6 - 500 kcmil
Terminal Types: YA-A, YA-A-TN
HYPLUG™ Types: AYP, AYPO

Aluminum #6 - 350 kcmil
Splice Type: YS-A

Variations:

Catalog Number:	Description:
Y46OEM11T	Tool only
Y46OEM11TKIT	Kit complete with Y46OEM11T tool, Y7AC9 electric pump (7,300 PSI), and PT2990010 10' hydraulic hose

NOTE:

Not to be used with 10,000 PSI operating pressure.
Ensure ONLY 7,300 PSI is used for this 11-Ton output force tool.



Specifications:

Operating Pressure:	7,300 PSI
Force Developed:	11 Tons
Weight:	34.5 lbs
Size:	14.00" x 12.25" x 10.00"
Die Style:	P644 die permanently affixed
Warranty:	2 year limited warranty

Accessories:

Catalog Number:	Description:
Y7AC9:	7,300 PSI Electric Hydraulic Pump
PT2990010:	10 foot long hydraulic hose
Y46OEMGUARD:	Clear safety shield
Y46OEMLOCATOR:	Adjustable connector locator

OEM840NCP

OEM Pneumatic Press

Installs #8 - 4/0 AWG

- Customizable clear safety guard for left, right, or front feed cable entry
- Guarded foot switch
- Adjustable connector locator
- Cycle counter
- Accommodates UM, U and W dies
- Testing for UL Listing performed up to:
 - U dies: UL Listed to 1/0 AWG (YA-L), #2 AWG (YAV-L)
 - W dies: UL Listed to 3/0 AWG (YA-L), 1/0 AWG (YAV-L)

Variations:

Catalog Number: OEM840NCP
Description: OEM Pneumatic Press

Accessories:

Catalog Number: PT50024685
Description: U / UM Die Holder Assembly

Catalog Number: PT50024683
Description: W Die Holder Assembly

Catalog Number: PT50024605
Description: Front Safety Guard



Specifications:

Weight: 60.0 lbs
Size: 22.75" x 12.38" x 10.25"
 (18.56" L with air gauge)
Die Style: UM, U, W Styles
Crimp Speed: 3 seconds (approximately)
Life Cycles: 2.5 M cycles (min)
Air Pressure: 90-100 PSI
Connector Port: 3/8" NPT female thread
Warranty: 2 year limited warranty

See Connector and Die Selection Matrix below
 all dies, nest and indenters are sold separately

Connector and Die Selection Matrix				
Wire Size	YAD-M Connectors		YA and YA-L Connectors	
	UM Dies (DLO Copper)		U Dies (Code)	W Dies (Code)
	Indenter	Nest	Copper	Copper
#8 AWG	UMA	UM8CN	U8CRT	W8CRT
#6 AWG	UMB	UM6CN	U6CRT	W6CRT
#4 AWG	UMB	UM4CN	U4CRT	W4CRT
#2 AWG	UMB	UM2CN	U2CRT	W2CRT
1/0 AWG	UMC	UM25N	U25RT	W25RT
2/0 AWG	UMC	UM26N	U26RT	W26RT
3/0 AWG	UMC	UM27N	U27RT	W27RT
4/0 AWG	UMC	UM28N	U28RT	W28RT



UM Nest/Indenter



UM Crimped Terminal

N-61

Y6NCP1

Pneumatic OEM Crimp Tool

Accepts J-dies for wider wire range

- UL Listed connections used with BURNDY UL Listed connectors
- 360° rotating head
- Reliable crimp performance
- Tested to 300,000 crimps without a failure
- Pull Out Force exceeds Mil Spec/SAE*

For Use On:

Copper - #22 - #4 AWG

Nylon, Vinyl and Bare Terminals/Splices

Nylon:

YAE, YAE-N, YAE-N-F, YAE-Z, YAEV, YAEV-L, YAEV-H, YAEV-RH, YAEV-RS, TN*, YAES*, TN-F*, YAES-F*, SN, YSE-HN

Vinyl:

TP, BA, TP-F, BA-EF, TP-Z, BA-EZ, TP-LF, BA-EL, SP, BS

Bare:

T, YAD, T-F, YAD-F, YAV, YAV-L, YAV-H, YAV-R, YAV-RS, YAV-T-F, YAV-H-F, YAV-Z, YSV, YSV-H, YSV-L, YA, YAV, YS, YSV

*Excludes TN and YAES terminals with #12 AWG wire

Pneumatic crimp tool Catalog Number

Y6NCP1 includes:

- Y6NCP1 Tool
- Tool Case
- 1/8" NPT air hose
- Crimp head for J-Dies

Variations:

Catalog Number:	Description:
Y6NCP1SD	Pneumatic OEM Tool using SD-dies (industry standard profile); See separate cut sheet for more information



Specifications:

Tool Weight:	4.4 lbs
Length x Dia.:	12.88" x 2.63" x 2.63"
Die Style:	J style
Air Pressure:	90-110 PSI
Crimp Motion:	Scissor Action
Pull Out Force:	Exceeds Mil Spec/SAE*
Warranty:	1 year limited warranty

Accessories:

Catalog Number:	Description:
Y6NCP1FTSW:	Foot Switch
Y6NCP1BMNT:	Bench Mount Unit
J6NCP1CH:	Replacement J-die crimp head (included)
J1022NC1:	Die set for YAE, YAE-N, YAE-N-F, YAE-Z
J1022NC2:	Die set for YAEV, YAEV-L, YAEV-H, YAEV-RH, YAEV-RS
J1022NC3:	Die set for TN, YAES, TN-F, YAES-F, SN, YSE-HN
J1022NC4:	Die set for TP, BA, TP-F, BA-EF, TP-Z, BA-EZ, TP-LF, BA-EL, SP, BS
J1022NC5:	Die set for T, YAD, T-F, YAD-F, YAV, YAV-L, YAV-H, YAV-R, YAV-RS, YAV-T-F, YAV-H-F, YAV-Z, YSV, YSV-H, YSV-L
J8CNC:	Die set used with Y2CNC (sold separately) for #8 size YA, YAV, YS, YSV
J6CNC:	Die set used with Y2CNC (sold separately) for #6 size YA, YAV, YS, YSV
J4CNC:	Die set used with Y2CNC (sold separately) for #4 size YA, YAV, YS, YSV
Y2CNC:	Used with J8CNC, J6CNC, and J4CNC (sold separately)

Y6NCP1SD

Pneumatic OEM Crimp Tool For Loose Piece Terminals/Splices

- UL Listed connections used with BURNDY® UL Listed connectors
- 360° rotating head
- Reliable crimp performance
- Tested to 300,000 crimps without a failure
- Pull Out Force exceeds UL 486A/B
- Industry standard die envelope; identical to MRE1022B and MRE1022NV hand tools crimp profiles

For Use On:

Copper - #22 - #10 AWG

Nylon, Vinyl and Bare Terminals/Splices

Nylon:

YAE, YAE-N, YAE-N-F, YAE-Z, YAEV, YAEV-L, YAEV-H, YAEV-RH, YAEV-RS, TN, YAES, TN-F, YAES-F, SN, YSE-HN

Vinyl:

TP, BA, TP-F, BA-EF, TP-Z, BA-EZ, TP-LF, BA-EL, SP, BS

Bare:

T, YAD, T-F, YAD-F, YAV-, YAV-L, YAV-H, YAV-R, YAV-RS, YAV-T-F, YAV-H-F, YAV-Z, YSV, YSV-H, YSV-L

Pneumatic crimp tool Catalog Number Y6NCP1SD includes:

- Tool Case
- 1/8" NPT air hose
- Crimp head for SD-Dies
- Nylon/Vinyl SD Die Set
- Bare SD Die Set
- Terminal Locator Plate

Variations:

Catalog Number:	Description:
Y6NCP1	Pneumatic OEM Tool using J-dies (sold separately) See separate cut sheet for more information

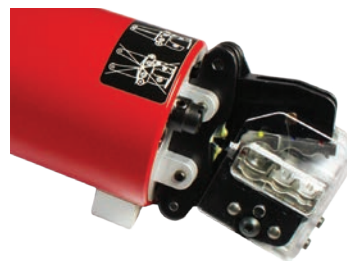


Specifications:

Tool Weight:	4.4 lbs
Length x Dia.:	12.88" x 2.63" 2.63"
Die Style:	SD Industry-Standard Die Envelope
Air Pressure:	90-110 PSI
Crimp Motion:	Scissor Action
Pull Out Force:	Exceeds UL 486A/B
Warranty:	1 year limited warranty

Accessories:

Y6NCP1FTSW:	Foot Switch
Y6NCP1BMNT:	Bench Mount Unit
SD10NCP1CH:	Replacement SD-die crimp head (included)
BECNVSD:	Replacement Nylon/Vinyl SD-die set (included)
BECBSD:	Replacement Bare SD-die set (included)
SD10NCP1LP1:	Replacement Locator Plate (included)



Spring-loaded Terminal Locator



Y6NCP1BMNT
(tool not included
sold separately)

60 Ton Dies



60-Ton HPS/Fargo-equivalent Dies

CD Index; Circumferential Profile

BURNDY Die Catalog Number	Conductor Code Name	Conductor Size	Typical HPS/Fargo Connectors	
			UNI-GRIP® Splice	UNI-GRIP® Deadend
07CD60	Peony	300.0 AAC	C150707	C010707
	Tulip	336.4 AAC	C150707	C010707
	Daffodil	350.0 AAC	C150707	C010707
	no name (0.595-0.680 dia.)	281.4-312.8 AAAC	AB150707	AB010707
	Owl	266.8 ACSR 6/7 Str.	A150709	A010709
	Partridge	266.8 ACSR 26/7 Str.	A150710	A010710
08CD60	Canna	397.5 AAC	C150808	C010808
	Four-O'Clock	400.0 AAC	C150808	C010808
	no name (0.681-0.765 dia.)	394.5-419.6 AAAC	AB150808	AB010808
	Ostrich	300.0 ACSR 26/7 Str.	A150811	A010811
	Merlin	336.4 ACSR 18/1 Str.	A150812	A010812
	Linnet	336.4 ACSR 26/7 Str.	A150813	A010813
	Chickadee	397.5 ACSR 18/1 Str.	A150815	A010815
09CD60	Goldentuft	450.0 AAC	C150909	C010909
	Yarrow	450.0 AAC	C150909	C010909
	Cosmos	477.0 AAC	C150909	C010909
	Syringa	477.0 AAC	C150909	C010909
	Zinnia	500.0 AAC	C150909	C010909
	Hyacinth	500.0 AAC	C150909	C010909
	Ganzania	550.0 AAC	C150909	C010909
	no name (0.772-0.855 dia.)	465.4-503.6 AAAC	AB150909	AB010909
	Oriole	336.4 ACSR 30/7 Str.	A150914	A010914
	Brant	397.5 ACSR 24/7 Str.	A150916	A010916
	Ibis	397.5 ACSR 26/7	A150917	A010917
	Pelican	477.0 ACSR 18/1 Str.	A150919	A010919
	Flicker	477.0 ACSR 24/7 Str.	A150920	A010920
10CD60	Dahlia	556.5 AAC	C151010	C011010
	Mistletoe	556.5 AAC	C151010	C011010
	Meadowsweet	600.0 AAC	C151010	C011010
	Orchid	636.0 AAC	C151010	C011010
	Heuchera	650.0 AAC	C151010	C011010
	no name (0.856-0.950 dia.)	545.0-657.3 AAAC	AB151010	AB011010
	Hawk	477.0 ACSR 26/7 Str.	A1510211	A0110211

60 Ton Dies



60-Ton HPS/Fargo-equivalent Dies

CD Index; Circumferential Profile
(Continued)

BURNDY Die Catalog Number	Conductor Code Name	Conductor Size	Typical HPS/Fargo Connectors	
			UNI-GRIP® Splice	UNI-GRIP® Deadend
10CD60 (Continued)	Osprey	556.5 ACSR 18/1 Str.	A151023	A011023
	Parakeet	556.5 ACSR 24/7 Str.	A151024	A011024
	Dove	556.5 ACSR 26/7 Str.	A151025	A011025
	Swift	636.0 ACSR 36/1 Str.	A151030	A010030
	Kingbird	636.0 ACSR 18/1 Str.	A151031	A010031
11CD60	Verbena	700.0 AAC	C151111	C011111
	Flag	700.0 AAC	C151111	C011111
	Violet	715.5 AAC	C151111	C011111
	Nasturtium	715.5 AAC	C151111	C011111
	Petunia	750.0 AAC	C151111	C011111
	Cattail	750.0 AAC	C151111	C011111
	Arbutus	795.0 AAC	C151111	C011111
	Lilac	795.0 AAC	C151111	C011111
	Fuchsia	800.0 AAC	C151111	C011111
	Heliotrope	800.0 AAC	C151111	C011111
	no name (0.940-1.036 dia.)	739.8-740.8 AAAC	AB151111	AB011111
	Hen	477.0 ACSR 30/7 Str.	A151122	A011122
	Eagle	556.5 ACSR 30/7 Str.	A151126	A011126
	Peacock	605.0 ACSR 24/7 Str.	A151127	A011127
	Squab	605.0 ACSR 26/7 Str.	A151128	A011128
	Rook	636.0 ACSR 24/7 Str.	A151132	A011132
	Grosbeak	636.0 ACSR 26/7 Str.	A151133	A011133
	Flamingo	666.6 ACSR 24/7 Str.	A151136	A011136
	Gannett	666.6 ACSR 26/7 Str.	A151137	A011137
	Stilt	715.5 ACSR 24/7 Str.	A151138	A011138
Coot	795.0 ACSR 36/1 Str.	A151141	A011141	
12CD60	Anemone	874.5 AAC	C151212	C011212
	Crocus	874.5 AAC	C151212	C011212
	Cockscomb	900.0 AAC	C151212	C011212
	Snapdragon	900.0 AAC	C151212	C011212
	Magnolia	954.0 AAC	C151212	C011212
	Goldenrod	954.0 AAC	C151212	C011212
	no name (1.026-1.131 dia.)	833.6-932.6 AAAC	AB151212	AB011212
	Teal	605.0 ACSR 30/19 Str.	A151229	A011229
	Egret	636.0 ACSR 30/19 Str.	A151234	A011234

N-65

60 Ton Dies



60-Ton HPS/Fargo-equivalent Dies

CD Index; Circumferential Profile
(Continued)

BURNDY Die Catalog Number	Conductor Code Name	Conductor Size	Typical HPS/Fargo Connectors	
			UNI-GRIP® Splice	UNI-GRIP® Deadend
12CD60 (continued)	Starling	715.5 ACSR 26/7 Str.	A151239	A011239
	Tern	795.0 ACSR 45/7 Str.	A151242	A011242
	Cuckoo	795.0 ACSR 24/7 Str.	A151243	A0112431
	Condor	795.0 ACSR 54/7 Str.	A1512441	A0112441
	Drake	795.0 ACSR 26/7 Str.	A1512451	A0112451
	Ruddy	900.0 ACSR 45/7	A151247	A011247
	Catbird	954.0 ACSR 36/1 Str.	A151249	A011249
13CD60	Hawkweed	1000.0 AAC 37 Str.	C151313	C011313
	Camelia	1000.0 AAC 61 Str.	C151313	C011313
	Bluebell	1033.5 AAC 37 Str.	C151313	C011313
	Larkspur	1033.5 AAC 61 Str.	C151313	C011313
	Marigold	1113.0 AAC 61 Str.	C151313	C011313
	no name (1.140-1.235 dia.)	1000.0-1127.0 AAAC	AB151313	AB011313
	Mallard	795.0 ACSR 30/19 Str.	A151346	A011346
	Canary	900.0 ACSR 54/7 Str.	A151348	A011348
	Rail	954.0 ACSR 45/7 Str.	A151350	A011350
	Cardinal	954.0 ACSR 54/7 Str.	A1513511	A011351
	Ortolan	1033.5 ACSR 45/7 Str.	A151353	A011353
14CD60	Hawthorn	1192.5 AAC 61 Str.	C151414	C011414
	Narcissus	1272.0 AAC 61 Str.	C151414	C011414
	no name (1.236-1.330 dia.)	1172.0-1300.0 AAAC	AB151414	AB011414
	Curlew	1033.5 ACSR 54/7 Str.	A151454	A011454
	Bluejay	1113.0 ACSR 45/7 Str.	A151455	A011455
	Finch	1113.0 ACSR 54/19 Str.	A151456	A011456
Bunting	1192.5 ACSR 45/7 Str.	A151457	A011457	
15CD60	Columbine	1351.5 AAC 61 Str.	AC151515	AC011515
	Carnation	1431.0 AAC 61 Str.	AC151515	AC011515
	Gladiolus	1510.5 AAC 61 Str.	AC151515	AC011515
	no name (1.331-1.425 dia.)	1361.0-1500.0 AAAC	AB151315	AB011515
	Grackle	1192.5 ACSR 54/19 Str.	A151558	A011558
	Bittern	1272.0 ACSR 45/7 Str.	A1515591	A0115591
	Pheasant	1272.0 ACSR 54/19 Str.	A151560	A011560
	Dipper	1351.5 ACSR 45/7 Str.	A151561	A011561
Martin	1351.5 ACSR 54/19 Str.	A151562	A011562	

60 Ton Dies



60-Ton HPS/Fargo-equivalent Dies
CD Index; Circumferential Profile
(Continued)

BURNDY Die Catalog Number	Conductor Code Name	Conductor Size	Typical HPS/Fargo Connectors	
			UNI-GRIP® Splice	UNI-GRIP® Deadend
16CD60	Coreopsis	1590.0 AAC 61 Str.	C151616	C011616
	Dogwood	1590.0 AAC 91 Str.	C151616	C011616
	no name (1.426-1.520 dia.)	1534.0-1703.0 AAAC	AB151616	AB011616
	Bobolink	1431.0 ACSR 45/7 Str.	A151663	A011663
	Lapwing	1590.0 ACSR 45/7 Str.	A151667	A011667
17CD60	Jessamine	1750.0 AAC 61 Str.	C151717	C011717
	Falcon	1590.0 ACSR 54/19 Str.	A1517681	A0117681
	Chukar	1780.0 ACSR 84/19 Str.	A151769	A011769
	Seahawk	1869.0 ACSR 68/7 Str.	A151770	A011717



Top: close up of marking on Fargo splice requiring 12CD die index.

Bottom: Fargo splice requiring 12CD die index.



60 Ton Dies



60-Ton HPS/Fargo-equivalent Dies

SH Index; Hexagonal Profile

AH Index; Hexagonal Profile

Two Die Sets Required (sold separately)		Conductor Code Name	Conductor Size	Typical HPS/Fargo Connectors	
BURNDY Catalog # Aluminum Die	BURNDY Catalog # Steel Die			2-Die Splice	2-Die Deadend
75AH60	75SH60	Pigeon	3/0 ACSR 6/1 Str.	TJA7829	SEDA7829
76AH60	75SH60	Penguin	4/0 ACSR 6/1 Str.	TJA7929	SEDA7929
	74SH60	Waxwing	266.8 ACSR 18/1 Str.	TJA1102	SEDA1102
	76SH60	Partridge	266.8 ACSR 26/7 Str.	TJA1109	SEDA1109
20AH60	74SH60	Merlin	336.4 ACSR 18/1 Str.	TJA1302	SEDA1302
	74SH60	Chickadee	397.5 ACSR 18/1 Str.	TJA1502	SEDA1502
	10SH60	Ostrich	300.0 26/7 Str.	TJA1209	SEDA1209
	10SH60	Linnet	336.4 ACSR 26/7 Str.	TJA1309	SEDA1309
	10SH60	Oriole	336.4 ACSR 30/7 Str.	TJA1313	SEDA1313
	10SH60	Brant	397.5 ACSR 24/7 Str.	TJA1508	SEDA1508
	10SH60	Ibis	397.5 ACSR 26/7 Str.	TJA1509	SEDA1509
	12SH60	Lark	397.5 ACSR 30/7 Str.	TJA1513	SEDA1513
24AH60	75SH60	Pelican	477.0 ACSR 18/1 Str.	TJA1802	SEDA1802
	75SH60	Osprey	556.5 ACSR 18/1 Str.	TJA2202	SEDA2202
	10SH60	Flicker	477.0 ACSR 24/7 Str.	TJA1808	SEDA1808
	10SH60	Parakeet	556.5 ACSR 24/7 Str.	TJA2208	SEDA2208
	12SH60	Hawk	477.0 ACSR 26/7 Str.	TJA1809	SEDA1809
	12SH60	Hen	477.0 ACSR 30/7 Str.	TJA1813	SEDA1813
	12SH60	Dove	556.5 ACSR 26/7 Str.	TJA2209	SEDA2209
27AH60	12SH60	Peacock	605.0 ACSR 24/7 Str.	TJA2408	SEDA2408
	12SH60	Squab	605.0 ACSR 26/2 Str.	TJA2409	SEDA2409
	12SH60	Rook	636.0 ACSR 24/7 Str.	TJA2508	SEDA2508
	12SH60	Grosbeak	636.0 ACSR 26/7 Str.	TJA2509	SEDA2509
	12SH60	Flamingo	666.6 ACSR 24/7 Str.	TJA2808	SEDA2808
	12SH60	Gannet	666.6 ACSR 26/7 Str.	TJA2809	SEDA2809
	14SH60	Eagle	556.5 ACSR 30/7 Str.	TJA2213	SEDA2213
	14SH60	Wood Duck	605.0 ACSR 30/7 Str.	TJA2413	SEDA2413
	14SH60	Teal	605.0 ACSR 30/19 Str.	TJA2417	SEDA2417
	14SH60	Scoter	636.0 ACSR 30/7 Str.	TJA2513	SEDA2513
	14SH60	Egret	636.0 ACSR 30/19 Str.	TJA2517	SEDA2517
30AH60	10SH60	Tern	795.0 ACSR 45/7 Str.	TJA3318	SEDA3318
	10SH60	Ruddy	900.0 ACSR 45/7 Str.	TJA3818	SEDA3818
	10SH60	Rail	954.0 ACSR 45/7 Str.	TJA4118	SEDA4118
	12SH60	Stilt	715.5 ACSR 24/7 Str.	TJA3008	SEDA3008
	12SH60	Cuckoo	795.0 ACSR 24/7 Str.	TJA3308	SEDA3308

60 Ton Dies



60-Ton HPS/Fargo-equivalent Dies

SH Index; Hexagonal Profile
AH Index; Hexagonal Profile
(Continued)

Two Die Sets Required (sold separately)		Conductor Code Name	Conductor Size	Typical HPS/Fargo Connectors	
BURNDY Catalog # Aluminum Die	BURNDY Catalog # Steel Die			2-Die Splice	2-Die Deadend
30AH60 (Continued)	12SH60	Condor	795.0 ACSR 54/7 Str.	TJA3321	SEDA3321
	12SH60	Crane	874.5 ACSR 54/7 Str.	TJA3721	SEDA3721
	14SH60	Starling	715.5 ACSR 26/7 Str.	TJA3009	SEDA3009
	14SH60	Drake	795.0 ACSR 26/7 Str.	TJA3309	SEDA3309
	14SH60	Canary	900.0 ACSR 54/7 Str.	TJA3821	SEDA3821
	14SH60	Towhee	954.0 ACSR 48/7 Str.	TJA4119	SEDA4119
	14SH60	Cardinal	954.0 ACSR 54/7 Str.	TJA4121	SEDA4121
	16SH60	Redwing	715.5 ACSR 30/19 Str.	TJA3017	SEDA3017
	16SH60	Mallard	795.0 ACSR 30/19 Str.	TJA3317	SEDA3317
34AH60	10SH60	Ortolan	1033.5 ACSR 45/7 Str.	TJA4418	SEDA4418
	12SH60	Bluejay	1113.0 ACSR 45/7 Str.	TJA4718	SEDA4718
	12SH60	Bunting	1192.5 ACSR 45/7 Str.	TJA4918	SEDA4918
	14SH60	Curlew	1033.5 ACSR 54/7 Str.	TJA4421	SEDA4421
	14SH60	Finch	1113.0 ACSR 54/19 Str.	TJA4724	SEDA4724
36AH60	12SH60	Bittern	1272.0 ACSR 45/7 Str.	TJA5118	SEDA5118
	12SH60	Dipper	1351.5 ACSR 45/7 Str.	TJA5218	SEDA5218
	12SH60	Bobolink	1431.0 ACSR 45/7 Str.	TJA5418	SEDA5418
	14SH60	Grackle	1192.5 ACSR 54/19 Str.	TJA4924	SEDA4924
	16SH60	Pheasant	1272.0 ACSR 54/19 Str.	TJA5124	SEDA5124
38AH60	16SH60	Martin	1351.5 54/19 Str.	TJA5224	SEDA5224
	16SH60	Plover	1431.0 54/19 Str.	TJA5424	SEDA5424
	12SH60	Nuthatch	1510.5 45/7 Str.	TJA5618	SEDA5618
40AH60	16SH60	Parrot	1510.5 54/19 Str.	TJA5624	SEDA5624
	12SH60	Lapwing	1590.0 45/7 Str.	TJA5718	SEDA5718



Above: close up of marking on Fargo splice requiring 14SH die index.



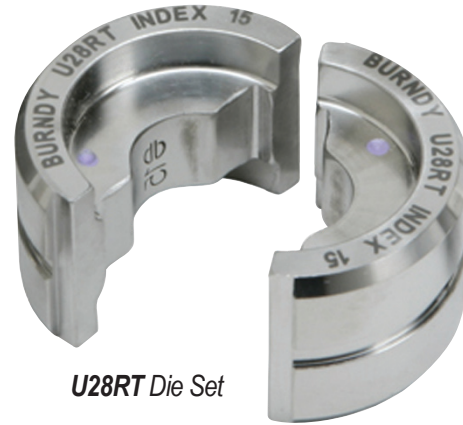
Left: Fargo splice requiring 30AH die index.

12-Ton U Dies*

**For Y35, Y39, Y750, PAT750 Series
PAT46 Series (with PUADP1 Adapter)**

* Non-tension U-type 12 ton dies for YA, YS, YA-A, YS-A style connectors

** Wide dies are intended for use on long barrel terminals and splices (YA/YS) only.

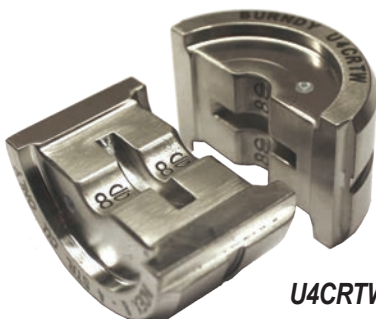


U28RT Die Set

Die Sets sold separately; U Die Kits also available; see following page

Note: N/A = not applicable

Wire Size	Copper	Copper Wide Die**	Aluminum
#8 AWG	U8CRT	U8CRTW	U8CABT
#6 AWG	U5CRT	U5CRTW	U6CABT
#4 AWG	U4CRT	U4CRTW	U4CABT
#3 AWG	U3CRT	U3CRTW	N/A
#2 AWG	U2CRT	U2CRTW	U2CABT
#1 AWG	U1CRT1	U1CRT1W	U1CART
1/0 AWG	U25RT	U25RTW	U25ART
2/0 AWG	U26RT	U26RTW	U26ART
3/0 AWG	U27RT	U27RTW	U27ART
4/0 AWG	U28RT	U28RTW	U28ART
250 kcmil	U29RT	N/A	U29ART
300 kcmil	U30RT		U30ART
350 kcmil	U31RT		U31ART
400 kcmil	U32RT		U32ART
500 kcmil	U34RT		U34ART
535 Flex	U38XRT		N/A
600 kcmil	U36RT		U36ART
750 kcmil	U39RT		U39ART2
777 Flex	U44XRT		N/A



U4CRTW Wide Die Set



PT29291 die box is available (sold separately) holding up to 15 "U" style (standard or wide) die sets; dies not included.

N-70

U Die Kits

**For Y35, Y39, Y750, PAT750 Series
PAT46 Series (with PUADP1 Adapter)**

UDIEKITCU and **UDIEKITAL** include 15 sets of “U” dies and die case. These stainless steel color coded dies are for crimping YA, YS, YA-A, and YS-A types of connectors, ranging from #6 AWG through 750 kcmil.

UDIEKITCUW includes 9 sets of wide stainless steel color coded dies for crimping long barrel YA and YS types of connectors up to 4/0 AWG. The wide dies require only one crimp compared to 2 for the standard width dies.

Note: N/A = not applicable

UDIEKITCU



Wire Size	UDIEKITCU includes	UDIEKITCUW includes	UDIEKITAL includes
#8 AWG	N/A	U8CRTW	N/A
#6 AWG	U5CRT	U5CRTW	U6CABT
#4 AWG	U4CRT	U4CRTW	U4CABT
#2 AWG	U2CRT	U2CRTW	U2CABT
#1 AWG	U1CRT1	U1CRT1W	U1CART
1/0 AWG	U25RT	U25RTW	U25ART
2/0 AWG	U26RT	U26RTW	U26ART
3/0 AWG	U27RT	U27RTW	U27ART
4/0 AWG	U28RT	U28RTW	U28ART
250 kcmil	U29RT	N/A	U29ART
300 kcmil	U30RT		U30ART
350 kcmil	U31RT		U31ART
400 kcmil	U32RT		U32ART
500 kcmil	U34RT		U34ART
600 kcmil	U36RT		U36ART
750 kcmil	U39RT		U39ART2
Die Case	PT29291	PT29291	PT29291

UDIEKITHYGRD includes 8 dies sets. Seven die sets are used to install the BURNDY® HYGROUND® irreversible compression grounding connectors; the U2CABT die set is for pre-crimping 1/2”, 5/8” and 3/4” ground rods for increased rotational resistance. The UDIEKITHYGRD also includes the PT29291 die case.

UDIEKITHYGRD includes UC, UO, U997, PU998, U1011, U1104, U1105, U2CABT (Ground rod pre-crimp die), and PT29291 die case

N-71

UM-Style Dies

**For Y35, Y39, Y750, PAT750 Series,
Y46 and PAT46 Series (with PUADP1 Adapter),
OEM840NCP (up to 4/0 size)**



UM-style Nest and Indenter dies are specifically designed to work with the YAD lugs. The distinctive “M” crimping profile design straddles the brazed seam of the YAD-M and YAV-L series lugs to provide a consistent, long term, reliable connection. Accepts copper cable sizes from 8 AWG to 600 kcmil for DLO/ Flex cable.

CNC machined from stainless steel, these dies are compatible with all BURNDY® tooling that accepts a “U” die envelope.

Sold individually or in a kit (**UMDIEKIT**) which has select dies/indenters covering #8 to 4/0 AWG in a metal die case.

Copper Wire Size	Catalog Number (Indenter Dies)	Catalog Number (Nest Dies)	Crimps Lug Series
8 AWG DLO	UMA	UM8CN	YAD-M, YAV-L
6 AWG DLO	UMB	UM6CN	YAD-M, YAV-L
4 AWG DLO	UMB	UM4CN	YAD-M, YAV-L
2 AWG DLO	UMB	UM2CN	YAD-M, YAV-L
1/0 AWG DLO	UMC	UM25N	YAD-M, YAV-L
2/0 AWG DLO	UMC	UM26N	YAD-M, YAV-L
3/0 AWG DLO	UMC	UM27N	YAD-M, YAV-L
4/0 AWG DLO	UMC	UM28N	YAD-M, YAV-L
300 kcmil DLO	UME	UM30N	YAD-M
350 kcmil DLO	UME	UM31N	YAD-M
450 kcmil DLO	UME	UM33N	YAD-M
600 kcmil DLO	UME	UM36N	YAD-M



**Close up of “M”
Profile Crimp**

N-72

UMDIEKIT Contents		
Catalog Number	Description	Quantity
UMA	Indenter #8 AWG	1
UMB	Indenter #6, #4, #2 AWG	1
UMC	Indenter 1/0-4/0	1
UM8CN	Nest #8 AWG	1
UM6CN	Nest #6 AWG	1
UM4CN	Nest #4 AWG	1
UM2CN	Nest #2 AWG	1
UM25N	Nest 1/0 AWG	1
UM26N	Nest 2/0 AWG	1
UM27N	Nest 3/0 AWG	1
UM28N	Nest 4/0 AWG	1
PT29291	UM Die Kit Case	1

W Dies

For MD6, MD7, Y500CTHS, PAT500SJ, PAT600, PATMD6 and CSMD Series

* These sizes (250 - 500) for Y500CTHS, MD734, and MD734R only.

** For PAT600 and PAT500SJ series and Y500CTHS only.

Note: N/A = not applicable

Suitable for use on YA, YS, YA-A, YS-A type non-tension connectors.

Die Sets sold separately; W Die Kits also available; see following page



W25RT Die Set

Wire Size	Copper (-VT)	Copper (-RT)	Aluminum
#8 AWG	W8CVT	W8CRT	X8CART
#6 AWG	W5CVT	W5CRT	W161
#4 AWG	W4CVT	W4CRT	W162
#3 AWG	W3CRT	W3CRT	N/A
#2 AWG	W2CVT	W2CRT	W239
#1 AWG	W1CVT	W1CRT1	W163
1/0 AWG	W25VT	W25RT	W241
2/0 AWG	W26VT	W26RT	W245
3/0 AWG	W27VT	W27RT	W166
4/0 AWG	W28VT	W28RT	W660
250 kcmil	W29VT*	W29RT*	W249
300 kcmil	W30VT*	W30RT*	N/A
350 kcmil	W31VT*	W31RT*	W31ART*
400 kcmil	W32VT*	W32RT*	N/A
450 kcmil	W33VT*	W33RT*	N/A
500 kcmil	W34VT*	W34RT*	N/A
600 kcmil	N/A	W36RT**	N/A

VT = "V" profile die for reduced handle force when using MD6/MD7 series tools; Twin die (includes both halves)
RT = Round die (circumferential); Twin die (includes both halves)



WDIETREE available (sold separately); holds up to 6 "W" style die sets (dies not included)



CASEWDIES die box available (sold separately); holds up to 12 "W" or "X" style die sets (dies not included)

N-73

W Die Kits

For MD6, MD7, Y500CTHS, PAT500SJ, PAT600, PATMD6 and CSMD Series

* These sizes (250 - 500) for PAT600 and PAT500SJ Series, Y500CTHS, MD734, and MD734R only.

Note: N/A = not applicable

Suitable for use on YA, YS, YA-A, YS-A type non-tension connectors.



CASEWDIES
included with die kits;
also sold separately
(dies not included)

Wire Size	WDIEKITCU for Copper includes	WDIEKITAL for Aluminum includes
#8 AWG	W8CRT	X8CART
#6 AWG	W5CRT	W161
#4 AWG	W4CRT	W162
#2 AWG	W2CRT	W239
#1 AWG	W1CRT1	W163
1/0 AWG	W25RT	W241
2/0 AWG	W26RT	W245
3/0 AWG	W27RT	W166
4/0 AWG	W28RT	W660
250 kcmil	W29RT*	W249
350 kcmil	W31RT*	W31ART*
500 kcmil	W34RT*	N/A
Die Case	CASEWDIES	CASEWDIES

W Die Related



WBG Die Set

- Double groove die set
- One (1) crimp per end on service entrance sleeves
- Requires half the number of crimps on other 5/8" sleeves



W28K Cutter Die Set

- Cuts #4 - 4/0 ACSR, Aluminum or Copper



WDIETREE W Die Holder

- Innovative die holder as alternative to the standard die case
- Designed to hold up to 6 W dies
- Shown with die sets (not included)



W687 & W702 Non-Bowing Die Sets

- Install one-piece, full-tension UNISPLICE™ sleeves on ACSR conductors without bowing (sold separately)

W687: Installs #4 ACSR 6/1, 7/1; YDS4RL and YDS4RLY
#2 ACSR 6/1; YS2RL and YDS2RLY

W702: Installs #2 ACSR 7/1; YDS021RL and YDS021RLY
1/0 ACSR; YDS25RL and YDS25RLY



CASEWDIES Compact Die Case

- Space for 12 W or X style dies (not included)

PATCUT4CUAL

PATRIOT® 11-Ton, Scissor Action
Hydraulic Self-Contained, 18V Lithium-Ion

- Extra wide jaw opening
- Scissor action cutting jaws
- 355° head rotation
- Multi-position assist handle
- Includes 2 batteries, charger, lanyard, polymer carrying case
- **EP Enhanced Power** labeled tools accept 2.0, 3.0, 4.0, and 5.0Ah Makita batteries

For Use On:

Maximum Cutting Capacity:

Copper and Aluminum:
up to 4.00" O.D.

Variations: (additional variations may be available)

Catalog Number:	Description:
PATCUT4CUALLI	with 3.0Ah battery
PATCUT4L5	with 5.0Ah battery



Specifications:

Output Force:	11 Tons
Tool Weight:	20.3 lbs
Size:	24.31" X 3.26" X 15.33"
Operating Voltage:	18 V-DC Lithium-Ion
Recharge Time:	30 minutes (3.0Ah) 45 minutes (5.0Ah)
Warranty:	5 year limited warranty (excludes blades) Lifetime warranty on INFINITY DRIVE® 3 year on batteries and charger

Accessories:

Catalog Number:	Description:
BAT18VLI:	3.0Ah Li-Ion battery
BAT18V5AHLI:	5.0Ah Li-Ion battery
PATCHGRLI:	120V-AC Charger
PATCHGRLIDC:	12/24V-DC Charger
PT208620:	Tool Retention Lanyard



PATCUT4CUALLI
with multi-position
assist handle



See Important Notes on Page N-6.

PATCUT2156

Latch Head, ACSR up to 2156 kcmil
Hydraulic Self-Contained Cutter, 18V Lithium-Ion

- 180° head rotation
- Durable hardened steel blades
- Specialized latch head for mid-span cuts
- Mechanical ram release with no power consumption
- Includes 2 batteries, charger, and polymer carrying case
- **EP Enhanced Power** labeled tools accept 2.0, 3.0, 4.0, and 5.0Ah Makita batteries



For Use On:

- Copper/Aluminum Cable:** up to 2"
- ACSR:** up to 2156 kcmil
- Ground Rod:** up to 3/4"
- Rebar:** up to 5/8"
- Soft Steel Bolts:** up to 3/4"
- Standard Guy:** up to 9/16"
- EHS Guy:** up to 9/16"

Variations: (additional variations may be available)

Catalog Number:	Description:
PATCUT2156LI	with 3.0Ah battery
PATCUT2156L5	with 5.0Ah battery

Specifications:

Output Force:	10 Tons
Tool Weight:	15.5 lbs
Size:	16.50" x 13.50" x 3.38"
Operating Voltage:	18 V-DC Lithium-Ion
Recharge Time:	30 minutes (3.0Ah) 45 minutes (5.0Ah)
Warranty:	5 year limited warranty (excluding blades) Lifetime warranty on INFINITY DRIVE® 3 year on batteries and charger

Accessories:

Catalog Number:	Description:
BAT18VLI:	3.0Ah Li-Ion battery
BAT18V5AHLI:	5.0Ah Li-Ion battery
PATCHGRLI:	120V-AC Charger
PATCHGRLIDC:	12/24V-DC Charger
PT208620:	Lanyard
CUT200BLMVBL:	Replacement Moving Blade
CUT200BLSTA:	Replacement Fixed (Stationary) Blade

See Important Notes on Page N-6.

PATCUT129

Latch Head, Cu/Al to 1.29" diameter Hydraulic Self-Contained Cutter, 18V Lithium-Ion

- 180° head rotation
- Overmolded handle and ergonomic design
- One-handed operation for advance, retract and hold
- Latch head design for interference free closure for mid-span cuts
- Includes 2 batteries, charger, and polymer carrying case
- **EP Enhanced Power** labeled tools accept 2.0, 3.0, 4.0, and 5.0Ah Makita batteries



For Use On:

Copper/Aluminum Cable: up to 1.29"

ACSR: up to 1113 kcmil

Ground Rod: up to 5/8"

Rebar: up to 1/2"

Soft Steel Bolts: up to 5/8"

Standard Guy: up to 1/2"

EHS Guy Strand: up to 3/8"

Variations: (additional variations may be available)

Catalog Number:	Description:
PATCUT129LI	with 3.0Ah battery
PATCUT129L5	with 5.0Ah battery

Specifications:

Output Force:	7 Tons
Tool Weight:	10.2 lbs
Size:	14.50" x 13.50" x 3.50"
Operating Voltage:	18 V-DC Lithium-Ion
Recharge Time:	30 minutes (3.0Ah) 45 minutes (5.0Ah)
Warranty:	5 year limited warranty (excluding blades) Lifetime warranty on INFINITY DRIVE® 3 year on batteries and charger

Accessories:

Catalog Number:	Description:
BAT18VLI:	3.0Ah Li-Ion battery
BAT18V5AHLI:	5.0Ah Li-Ion battery
PATCHGRLI:	120V-AC Charger
PATCHGRLLDC:	12/24V-DC Charger
PT208620:	Lanyard
PT10037388:	Replacement Moving Blade
PT10037384:	Replacement Fixed Blade

PATCUT245

Latch Head, Cu/Al up to 2.45" O.D.
Hydraulic Self-Contained Cutter 18V Lithium-Ion

- 180° head rotation
- Cuts up to 2.45" diameter copper/aluminum cable
- Specialized latch style cutting head for interference-free closure for mid-span work
- Ergonomic design, overmolded handle
- Includes 2 batteries, charger, and polymer carrying case
- **EP Enhanced Power** labeled tools accept 2.0, 3.0, 4.0, and 5.0Ah Makita batteries



For Use On:

Copper/Aluminum Cable:
Up to 2.45" O.D.

For Copper and Aluminum cable only. Do not cut steel, ground rod, rebar or guy wire.

Variations: (additional variations may be available)

Catalog Number:	Description:
PATCUT245LI	with 3.0Ah battery
PATCUT245L5	with 5.0Ah battery

Specifications:

Output Force:	6 Tons
Tool Weight:	13.7 lbs
Size:	18.13" x 13.50" x 3.50"
Operating Voltage:	18 V-DC Lithium-Ion
Recharge Time:	30 minutes (3.0Ah) 45 minutes (5.0Ah)
Warranty:	5 year limited warranty (excluding blades) Lifetime warranty on INFINITY DRIVE® 3 year on batteries and charger

Accessories:

Catalog Number:	Description:
BAT18VLI:	3.0Ah Li-Ion battery
BAT18V5AHLI:	5.0Ah Li-Ion battery
PATCHGRLI:	120V-AC Charger
PATCHGRLIDC:	12/24V-DC Charger
PT208620:	Lanyard
PT10038657:	Replacement Moving Blade
PT10040663:	Replacement Fixed Blade

See Important Notes on Page N-6.

PAT500SJCUT

6-Ton, Scissor Action
 Hydraulic Self-Contained, 18V Lithium-Ion

- Interchangeable scissor action crimping and cutting jaws
- 180° head rotation
- Uses W and X style dies with available crimping jaws
- Ergonomically balanced tool design
- Includes 2 batteries, charger, and polymer carrying case
- **EP Enhanced Power** labeled tools accept 2.0, 3.0, 4.0, and 5.0Ah Makita batteries



For Use On:

Maximum Cutting Capacity:

ACSR:

556 kcmil (26/7 Dove)

AAC:

636 kcmil

Copper:

500 kcmil soft drawn copper

Variations: (additional variations may be available)

Catalog Number:	Description:
PAT500SJCUTL1	with 3.0Ah battery
PAT500SJCUTL5	with 5.0Ah battery

Interchangeable Jaw Assemblies / Kits:

Catalog Number:	Description:
PATJAWSMD6	BG and D3 grooves
PATJAWSMD68	O and D3 grooves
PATJAWSMD66	D3 groove only (snub-nose)
PAT500SJ6LICUTKIT1	Kit includes crimp head with BG & D3 grooves, cutter jaw, 120V charger and 2 batteries (3.0Ah)
PAT500SJ68LICUTKIT1	Kit includes crimp head with O & D3 grooves, cutter jaw, 120V charger and 2 batteries (3.0Ah)

Specifications:

Output Force:	6 Tons
Tool Weight:	11.5 lbs
Size:	17.00" X 14.25" X 3.00"
Die Style:	W and X (with crimping jaws)
Operating Voltage:	18 V-DC Lithium-Ion
Recharge Time:	30 minutes (3.0Ah) 45 minutes (5.0Ah)
Warranty:	5 year limited warranty Lifetime warranty on INFINITY DRIVE® 3 year on batteries and charger

Accessories:

Catalog Number:	Description:
BAT18VLI:	3.0Ah Li-Ion battery
BAT18V5AHLI:	5.0Ah Li-Ion battery
PATCHGRLL:	120V-AC Charger
PATCHGRLLDC:	12/24V-DC Charger
PT10074020:	Wrist strap
WDIETREE:	W-die holder for 6 die sets

PATMDCUTLI

Battery Actuated IN-LINE® Tool
Hydraulic Self-Contained Cutter 18V Lithium-Ion

- 350° head rotation
- Ergonomically balanced tool design
- Actuated blade guide automatically closes for easy positioning
- Interchangeable scissor action jaws (sold separately) available to crimp or cut with same tool
- Includes 2 batteries, charger, and soft carrying case

For Use On:

Maximum Cutting Capacity:

- ACSR:**
556 kcmil (26/7 Dove)
- AAC:**
636 kcmil
- Copper:**
500 kcmil soft drawn copper

Variations: (additional variations may be available)

Catalog Number:	Description:
PATMDCUTLI	Tool with cutting blades; 120V-AC Li-Ion charger

Crimp/Cut Kits are also available supplied with both crimping and cutting jaws; see separate catalog page



Specifications:

Output Force:	6 Tons
Tool Weight:	8 lbs
Size:	22.00" x 5.00" x 2.75"
Operating Voltage:	18 V-DC Lithium-Ion
Recharge Time:	30 minutes
Warranty:	5 year limited warranty (excludes blades) Lifetime warranty on INFINITY DRIVE® 3 year on batteries and charger

Accessories:

Catalog Number:	Description:
BAT18VLI:	Hi-capacity LI battery (3.0 AH)
PATCHGRLI:	120V-AC Charger
PATCHGRLIDC:	12/24V-DC Charger
PATMDCUTACSRKIT:	Replaceable ACSR Blades Only (not jaw assembly)
PT10074020:	Wrist Strap

Interchangeable Jaw Assemblies (no tool included):

Catalog Number:	Description:
PATJAWSCUT:	Cutting jaws, includes ACSR blades
PATJAWSMD6:	Crimp jaws with permanent BG & D3 die grooves
PATJAWSMD68:	Crimp jaws with permanent O & D3 die grooves
PATJAWSMD66:	Crimp jaws with permanent D3 die groove only
PATJAWSMD6K:	Crimp jaws with KEARNEY™ groove
PATMD6JC:	Jaw covers for PATJAWSMD6 & PATJAWSMD68
PATMD66JC:	Jaw covers for PATJAWSMD66
PATMD6KJC:	Jaw covers for PATJAWSMD6K

See Important Notes on Page N-6.

PATMDALLIF Series

IN-LINE® Angle Pole Cutter / Crimper
 Hydraulic Self-Contained, 18V Lithium-Ion; 82"

- Adjustable Angular Head
- ASTM F711 Rated Pole
- Rocker trigger design for controlled actuation of the tool
- Safety lock to prevent accidental operation
- Includes 2 batteries and charger

For Use On:

Maximum Cutting Capacity:

ACSR:

556 kcmil (26/7 Dove)

AAC:

636 kcmil

Copper:

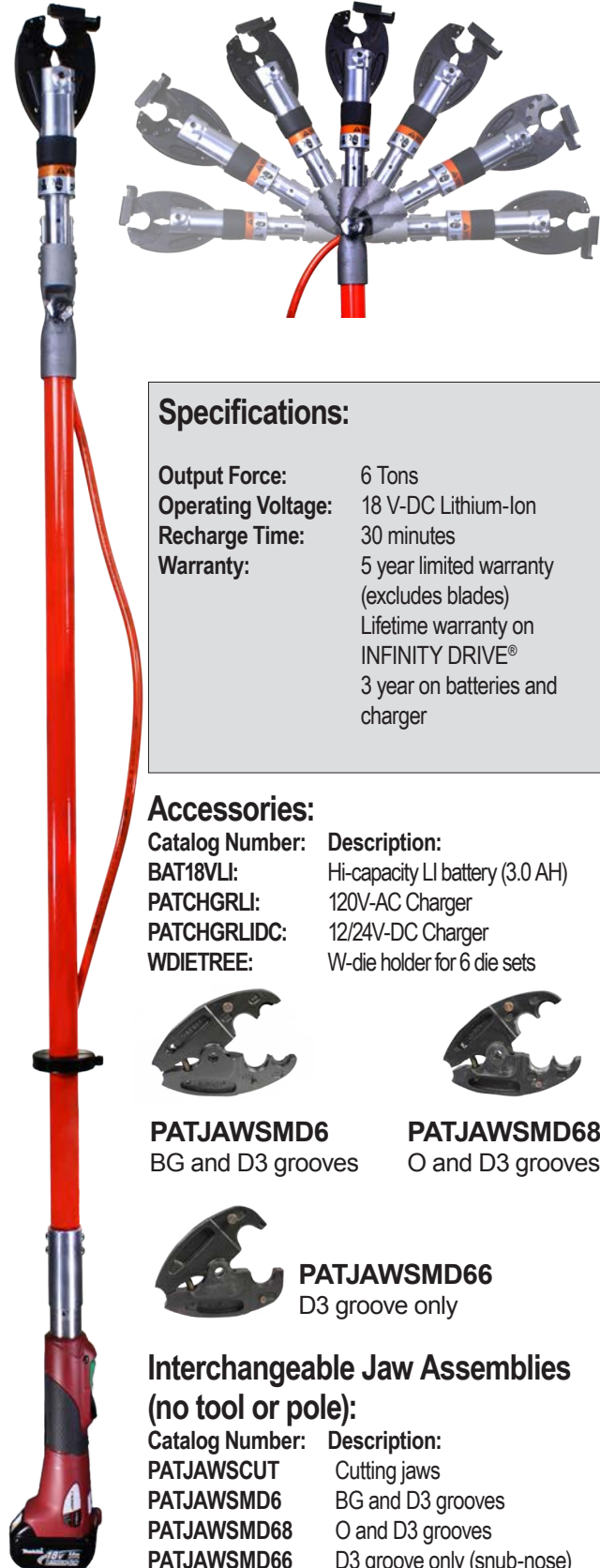
500 kcmil soft drawn copper

Variations: (additional variations may be available)

Catalog Number:	Description:
PATMDCUT82ALLIF	Cutter jaw; 82" F711 Pole
PATMD682ALLIF	Crimp Jaws (BG & D3); 82" F711 Pole
PATMD6882ALLIF	Crimp Jaws (O & D3); 82" F711 Pole
PATMD6682ALLIF	Crimp Jaws (D3 only); 82" F711 Pole

Kits with Tool, Crimping and Cutting Jaws, Pole:

Catalog Number:	Description:
PATMD682ALLIFWCJ	Kit includes crimp head with BG & D3 grooves, cutter jaw, 120V charger and 2 batteries
PATMD6882ALLIFWCJ	Kit includes crimp head with O & D3 grooves, cutter jaw, 120V charger and 2 batteries
PATMD6682ALLIFWCJ	Kit includes crimp head with D3 groove, cutter jaw, 120V charger and 2 batteries

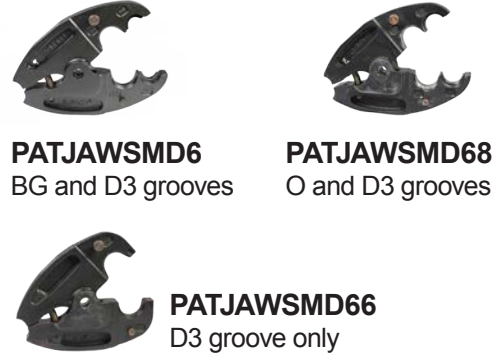


Specifications:

Output Force:	6 Tons
Operating Voltage:	18 V-DC Lithium-Ion
Recharge Time:	30 minutes
Warranty:	5 year limited warranty (excludes blades) Lifetime warranty on INFINITY DRIVE® 3 year on batteries and charger

Accessories:

Catalog Number:	Description:
BAT18VLI:	Hi-capacity LI battery (3.0 AH)
PATCHGRLLI:	120V-AC Charger
PATCHGRLLDC:	12/24V-DC Charger
WDIETREE:	W-die holder for 6 die sets



Interchangeable Jaw Assemblies (no tool or pole):

Catalog Number:	Description:
PATJAWSCUT	Cutting jaws
PATJAWSMD6	BG and D3 grooves
PATJAWSMD68	O and D3 grooves
PATJAWSMD66	D3 groove only (snub-nose)

See Important Notes on Page N-6.

N-82

BCC1000CUAL

Sealed Nickel Cadmium Cutter

Cuts up to 750 kcmil hard drawn copper;
1000 kcmil soft drawn copper; 2" O.D. aluminum

- Hook head design
- Three-way switch
- Hardened steel blades
- Withstands rugged use, resists oil and solvents
- Includes 1 battery, 1 charger, and case

Catalog Number BCC1000CUAL For Use On:

Hard Drawn Copper:
750 kcmil

Soft Drawn Copper:
1000 kcmil

Aluminum:
up to 2" O.D

Do Not Cut Steel or ACSR



Specifications:

Tool Weight:	6.0 lbs
Size:	14.50" x 4.50" x 4.00"
Operating Voltage:	12 V-DC Nickel Cadmium
Recharge Time:	1 hour (fast) to 16 hours (standard)
Warranty:	90 day limited warranty (excluding blades)



Accessories:

Catalog Number:	Description:
BCCBAT12V:	Sealed nickel cadmium battery
BCCCHGR:	120 V-AC Charger
BCCCASE:	Replacement Case for BCC1000CUAL tool
RP50RP03:	Replaceable Moving Blade
RP50RP02:	Replaceable Fixed Blade

YCUT129ACSR

Latch Head Style

Hydraulic Hand Operated Cutter

- Rapid advance pump
- Handle trigger drain
- Interference free closure on mid-span cuts
- 180° head rotation

Catalog Number YCUT129ACSR For Use On:

Copper/Aluminum Cable: up to 1.29"

ACSR: up to 1113 kcmil

Ground Rod: up to 5/8"

Rebar: up to 1/2"

Soft Steel Bolts: up to 5/8"

Standard Guy: up to 1/2"

EHS Guy Strand: up to 3/8"



Specifications:

Output Force:	7 Tons
Weight:	11.4 lbs
Size:	22.50" x 6.63" x 2.50"
Warranty:	5 year limited warranty (excluding blades)

Accessories:

Catalog Number:	Description:
PT10024162:	Carrying Case (included with tool)
PT10037388:	Moving Blade
PT10037384:	Fixed Blade



PT10024162 Hard Polymer Case for YCUT129ACSR

RHCC4CUAL

Scissor Action Cutter

Cuts up to 4.00" Copper / Aluminum Cable

- Specialized scissor head design for interference free closure for mid-span cuts
- High strength hardened steel cutting blades
- 360° swivel hose fitting
- Stainless Steel lifting assist eyebolt
- Light weight ergonomic design



Catalog Number RHCC4CUAL For Use On:

Copper/Aluminum Cable: up to 4.00"

Specifications:

Operating Pressure:	10,000 PSI
Weight:	19.9 lbs
Size:	21.29" x 9.13" x 5.15"
Warranty:	5 year limited warranty (excluding blades)



BAGCNVS5X9X24 Canvas Bag available separately (included with tool)

Accessories:

Catalog Number:	Description:
BAGCNVS5X9X24:	Canvas Bag (included with tool)
RHCC4CUALBLD:	Cutting Blade (one blade; 2 required)
RHCC4CUALGDEBLD:	Blade Guide

**See Hydraulic Pumps and Hydraulic Hoses;
Pump Accessories
for other necessary equipment.**

RHCC2156ACSR

Latch Head, Remote Operated Cutter Cuts up to 2156 kcmil ACSR

- 180° head rotation
- Durable hardened, precision steel blades
- Specialized latch head for mid-span cuts
- Durable canvas carrying bag stores tool and accessories

Catalog Number RHCC2156ACSR For Use On:

Copper/Aluminum Cable: up to 2"

ACSR: up to 2156 kcmil

Ground Rod: up to 3/4"

Rebar: up to 5/8"

Soft Steel Bolts: up to 3/4"

Standard Guy: up to 9/16"

EHS Guy Strand: up to 9/16"

Variations:

Catalog Number:	Description:
RHCC2156ACSR	Standard RHCC2156ACSR remote cutter
RHCC2156ACSRF	RHCC2156ACSR tool with female coupler



*PT10054094 Canvas Bag available separately
(included with tool)*



Specifications:

Operating Pressure:	10,000 PSI
Weight:	10 lbs
Size:	13.17" x 4.13" x 2.69"
Warranty:	5 year limited warranty (excluding blades)

Accessories:

Catalog Number:	Description:
PT10054094:	Canvas Bag (included with tool)
CUT200BLMVBL:	Replacement Moving Blade
CUT200BLSTA:	Replacement Fixed (Stationary) Blade

*See Hydraulic Pumps and Hydraulic Hoses;
Pump Accessories
for other necessary equipment.*

RHCC129ACSR

Latch Head, Remote Operated Cutter Cuts up to 1.29" Copper / Aluminum Cable

- Interference free closure for mid-span cuts
- Precision cutting blades for clean cuts
- High strength steel cylinder
- Light weight, ergonomic design
- Durable canvas carrying bag stores tool and accessories

Catalog Number RHCC129ACSR For Use On:

- Copper/Aluminum Cable:** up to 1.29"
- ACSR:** up to 1113 kcmil
- Ground Rod:** up to 5/8"
- Rebar:** up to 1/2"
- Soft Steel Bolts:** up to 5/8"
- Standard Guy:** up to 1/2"
- EHS Guy Strand:** up to 3/8"



Specifications:

Operating Pressure: 10,000 PSI
Weight: 5.8 lbs
Size: 11.25" x 3.75" x 3.00"
Warranty: 5 year limited warranty (excluding blades)



PT10043890 Canvas Bag available separately (included with tool)

Accessories:

- | Catalog Number: | Description: |
|-----------------|---------------------------------|
| PT10043890: | Canvas Bag (included with tool) |
| PT10037388: | Moving Blade |
| PT10037384: | Fixed Blade |
| RHCCHSA: | Hot Stick Adapter |

See Hydraulic Pumps and Hydraulic Hoses; Pump Accessories for other necessary equipment.

RHCC245CUAL

Latch Head, Remote Operated Cutter Cuts up to 2.45" Copper / Aluminum Cable

- Interference free closure for mid-span cuts
- Precision cutting blades for clean cuts
- Lightweight ergonomic design
- Durable canvas carrying bag stores tool and accessories

Catalog Number RHCC245CUAL For Use On:

Copper/Aluminum Cable: up to 2.45"



Specifications:

Operating Pressure:	10,000 PSI
Weight:	8.3 lbs
Size:	14.87" x 4.75" x 3.00"
Warranty:	5 year limited warranty (excluding blades)



PT10054094 Canvas Bag available separately
(included with tool)

Accessories:

Catalog Number:	Description:
PT10054094:	Canvas Bag (included with tool)
PT10038657:	Moving Blade
PT10040663:	Fixed Blade
RHCCHSA:	Hot Stick Adapter

**See Hydraulic Pumps and Hydraulic Hoses;
Pump Accessories
for other necessary equipment.**

MCC Series

Manual Cable Cutters

MCC600 cuts to 600 kcmil Cu/Al;
MCC1000 cuts to 1000 kcmil Cu/Al

- Rugged, high quality steel cutting blades
- Fiberglass handles with soft grips
- Excellent cutting edge performance
- Minimum of cable distortion

For Use On:

Copper/Aluminum Cable: up to 600 kcmil (MCC600)
up to 1000 kcmil (MCC1000)

Variations:

Catalog Number: MCC600	Description: 3.5 lbs; 21" overall length; cuts copper and aluminum cable to 600 kcmil; max. insulation diameter 1.31"
MCC1000	9.0 lbs; 32" overall length; cuts copper and aluminum cable to 1000 kcmil; max. insulation diameter 1.90"



Specifications (MCC600):

Weight:	3.5 lbs
Size:	21.00 x 5.00" x 2.00"
Max. Insulation Dia.:	1.31"
Warranty:	1 year limited warranty (excluding blades)

Accessories:

Catalog Number:	Description:
MCC600BLADESET:	Replacement blades for MCC600
MCC1000BLADESET:	Replacement blades for MCC1000

RCC - Cu/Al

RCC-Series Ratchet Cutters for Cu/Al

Three variations covering a range of Cu/Al

- Rugged, high quality steel cutting blades
- Excellent cutting edge performance
- Minimum of cable distortion

For Use On:

RCC600E: Copper & Aluminum 600 kcmil

RCC750HD: Copper & Aluminum 750 kcmil

RCC1000: Copper & Aluminum 1000 kcmil

Variations:

Catalog Number: **Description:**
RCC600E 10.5" overall length; cuts copper and aluminum cable to 600 kcmil; max. insulation diameter 1.05"; 1.3 lbs

RCC750HD 10.5" overall length; cuts copper and aluminum cable to 750 kcmil; max. insulation diameter 1.62"; 2.4 lbs

RCC1000 20" overall length; cuts copper and aluminum cable to 1000 kcmil; max. insulation diameter 2.38"; 5.0 lbs



Specifications (RCC600E):

Weight:	1.3 lbs
Length:	10.50" x 4.25" x 1.75"
Max. Insulation Dia.:	1.05"
Warranty:	1 year limited warranty (excluding blades)

Accessories:

Catalog Number:	Description:
RPC701302:	Fixed Replacement Blade for RCC1000
RPC701402:	Moveable Replacement Blade for RCC1000

RCC - Cu/Al, ACSR

RCC-Series Cutters for Cu/Al, ACSR

Three variations covering a range of Cu/Al , ACSR

- Quick release, bi-directional ratchet mechanism
- Rapid blade advance
- Easy cutting with minimal cable distortion

For Use On:

RCC954ACSR1K: Copper 1000 kcmil;
Aluminum 1000 kcmil;
ACSR 954 kcmil

RCC556: Copper 500 kcmil;
Aluminum 500 kcmil;
ACSR 556 kcmil

RCC336: Copper 350 kcmil;
Aluminum 500 kcmil;
ACSR 336 kcmil

Variations:

Catalog Number: **Description:**
RCC954ACSR1K 22.75" overall length; 1.38" max. insulation diameter; 6.5 lbs

RCC556 20" overall length; 1.25" max. insulation diameter; 4.5 lbs

RCC336 10.5" overall length; .74" max. insulation diameter; 1.2 lbs



Specifications (RCC954ACSR1K):

Weight:	6.5 lbs
Size:	22.75" x 7.00" x 1.88"
Max. Insulation Dia.:	1.38"
Warranty:	1 year limited warranty (excluding blades)

Accessories:

Catalog Number:	Description:
RPC705501:	Fixed Replacement Blade for RCC556
RPC705601:	Moveable Replacement Blade for RCC556
RPC902101:	Fixed Replacement Blade for RCC336
RPC902201:	Moveable Replacement Blade for RCC336

RWRC Series

Ratchet Wire Rope Cutters
 Cuts Mild and Stainless Steel

- Hardened steel blades
- Rapid blade advance
- Reduced handle force compared to scissor or compound action designs

For Use On:

RWRC916: Mild Steel: 9/16" diameter
 Stainless Steel: 1/2" diameter

RWRC516: Mild Steel: 5/16" diameter
 Stainless Steel: 1/4" diameter

Variations:

Catalog Number: **Description:**
RWRC916 20" overall length; 9/16" diameter Mild Steel; 1/2" diameter Stainless Steel; 4.4 lbs

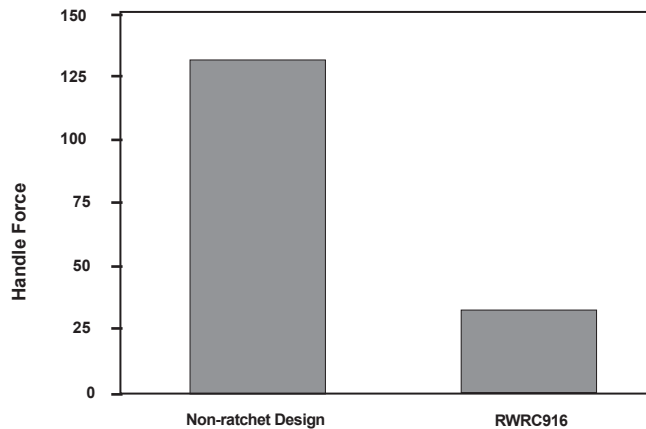
RWRC516 10" overall length; 5/16" diameter Mild Steel; 1/4" diameter Stainless Steel; 1.2 lbs



Specifications (RWRC916):

Weight: 4.4 lbs
Size: 20.00" x 9.00" x 2.00"
Mild Steel Dia.: 9/16"
Stainless Steel Dia.: 1/2"
Warranty: 2 year limited warranty (excluding blades)

1/4" Dia. Wire Rope



Y10AC9

Electric Hydraulic Pump; 10,000 PSI
Light weight, space saving design

- Easy to carry and transport
- Factory set relief valve
- 100,000+ life cycles
- Sealed electric pendant switch with 10-foot cord



For Use With:

Y10AC9: 10,000 PSI electric pump
Used with: Y34BH, Y35BH, Y35BH4, Y39BH, Y45, Y46, Y46C, Y750BHXT, Y750CBHXT, Y644MBH, Y4PC834MBH, Y81KFTMBH, Y60BHU, Y60LW, RHCC Series Cutters

Variations:

Catalog Number:	Description:
Y10AC9	Electric hydraulic pump
Y10AC9OEM	Electric hydraulic pump with foot switch; pump features "Jog & Hold"

Specifications:

Weight:	28.0 lbs (including oil)
Motor:	115V-AC 50/60 Hz 5/8 HP, 10,000 RPM
Height:	14.38"
Base:	18.00" x 8.75" x 6.50"
Max. Current Draw:	11 amp
Reservoir Volume:	1.61 quarts
Warranty:	5 year limited warranty

Examples of some of the remote crimping and cutting heads for use with Y10AC9 pump



Y60LW



RHCC129ACSR



Y4PC834MBH



RHCC10ACSR

Accessories:

Catalog Number:	Description:
YACCASE:	Steel carrying case with handle and locking latch
YACFC:	Foot control switch

See Hydraulic Hoses; Pump Accessories for Hose options

EPP10

Electric Hydraulic Pump; 10,000 PSI

Also available in 6,000 PSI

- Lightweight, small size
- 100,000+ life cycles
- Durable remote pendant switch

Variations / For Use With:

Catalog Number EPP10: 10,000 PSI electric pump
Used with: Y34BH, Y35BH, Y35BH4, Y750BHXT,
 Y750CBHXT, Y39BH, Y45, Y46C, Y46,
 Y60BHU, Y60LW, Y644MBH,
 Y4PC834MBH, Y81KFTMBH,
 RHCC Series Cutters

Catalog Number EPP6: 6,000 PSI electric pump
Used with: Y29BH, Y35L



Specifications:

Motor:	115V-AC/60 Hz 1/2 HP @ 3450 RPM
Max. Current Draw:	12.5 amperes
Weight:	30.0 lbs
Base:	18.00" x 8.00" x 6.00"
Height:	16.00"
Reservoir Volume:	2 quarts
Warranty:	5 year limited warranty

Examples of some of the remote crimping and cutting heads for use with EPP10 pump



Accessories:

Catalog Number:	Description:
EPPCASE1:	Steel carrying case with handle, locking latch
PT9711:	Pendant switch

See Hydraulic Hoses; Pump Accessories for Hose options

EP10

Electric Hydraulic Pump; 10,000 PSI

Also available in 6,000 PSI

- Dual voltage / hertz
- Oil level window
- 8 quart reservoir

Variations / For Use With:

Catalog Number:	Description:
EP10:	10,000 PSI electric pump; 1/2 HP 115/230 V-AC; 60 cycle
Used with:	Y34BH, Y35BH, Y35BH4, Y750BHXT, Y750CBHXT, Y39BH, Y45, Y46C, Y46, Y60BHU, Y60LW, Y644MBH, Y4PC834MBH, Y81KFTMBH, RHCC Series Cutters
EP101HP:	10,000 PSI electric pump; 1 HP 115/230 V-AC; 60 cycle
Used with:	Y34BH, Y35BH, Y35BH4, Y750BHXT, Y750CBHXT, Y39BH, Y45, Y46C, Y46, Y60BHU, Y60LW, Y644MBH, Y4PC834MBH, Y81KFTMBH, RHCC Series Cutters
EP101HP2:	10,000 PSI electric pump; 1/2 HP 220/230 V-AC; 50/60 cycle
Used with:	Y34BH, Y35BH, Y35BH4, Y750BHXT, Y750CBHXT, Y39BH, Y45, Y46C, Y46, Y60BHU, Y60LW, Y644MBH, Y4PC834MBH, Y81KFTMBH, RHCC Series Cutters
EP102:	10,000 PSI electric pump; 1/2 HP 220/230 V-AC; 50/60 cycle
Used with:	Y34BH, Y35BH, Y35BH-4, Y750BHXT, Y750CBHXT, Y39BH, Y45, Y46C, Y46, Y60BHU, Y60LW, Y644MBH, Y4PC834MBH, Y81KFTMBH, RHCC Series Cutters
EP6:	6,000 PSI electric pump
Used with:	Y35L, Y29BH



Specifications:

Motor:	1/2 HP 115/230V-AC, 60 Cycle; 1/2 HP @ 3450 RPM
Max. Current Draw:	10 amperes
Reservoir Volume:	8 quarts max; 2 quarts min.
Height:	17.50"
Base:	11.75" x 18.50"
Dry Weight:	68.0 lbs (86.0 lbs with max. fluid)
Warranty:	5 year limited warranty

Accessories:

See Hydraulic Hoses; Pump Accessories for Hose options

EPAC10

Electric Hydraulic Pump; 10,000 PSI
Also available in 6,000 PSI

- Roll cage
- 3 position switch and control box
- Full automatic or manual "Jog and Hold" cycles
- Windows allow easy inspection of proper oil level



Variations / For Use With:

Catalog Number: Description:
EPAC10: 10,000 PSI electric pump
Used with: Y34BH, Y35BH, Y35BH4, Y39BH, Y45, Y46, Y46C, Y750BHXT, Y750CBHXT, Y644MBH, Y4PC834MBH, Y81KFTMBH, Y60BHU, Y60LW, RHCC Series Cutters

EPAC6: 6,000 PSI electric pump
Used with: Y29BH, Y35L

Specifications:

Motor: 1/2 HP 115/230V-AC, 60 Cycle; 1/2 HP @ 3450 RPM
Max. Current Draw: 10 amperes
Reservoir Volume: 8 quarts max; 2 quarts min.
Height: 17.50"
Base: 11.75" x 18.50"
Dry Weight: 68.0 lbs (82.0 lbs with max. fluid)
Warranty: 5 year limited warranty

Examples of some of the remote crimping and cutting heads for use with EPAC10 pump

Accessories:

See Hydraulic Hoses; Pump Accessories for Hose options



Y60LW



Y81KFTMBH



RHCC129ACSR

HP10 and FP10

Manual Hydraulic Pump; 10,000 PSI
Also available in 6,000 PSI

- Solid base with broad leg stabilizers
- Quick disconnect hydraulic fitting
- Built in handle for easy transport
- Factory set pressure release valve with audible click
- Quality, heavy duty foot pad with diamond plate steel (FP10)

Variations / For Use With:

Catalog Number:	Description:
HP10:	10,000 PSI hand pump
Used with:	Y34BH, Y35BH, Y35BH4, Y750BHXT, Y750CBHXT, Y39BH, Y45, Y46C, Y46, Y644MBH, Y4PC834MBH, Y81KFTMBH, RHCC Series Cutters
HP6:	6,000 PSI hand pump
Used with:	Y29BH, Y35L
FP10:	10,000 PSI foot pump
Used with:	Y34BH, Y35BH, Y35BH4, Y750BHXT, Y750CBHXT, Y39BH, Y45, Y46C, Y46, Y644MBH, Y4PC834MBH, Y81KFTMBH, RHCC Series Cutters
FP6:	6,000 PSI foot pump
Used with:	Y29BH, Y35L



HP10 Hand Pump

Specifications:

Weight:	18.0 lbs
Size:	24.75" x 6.75" x 3.00"
Height (open):	20.00"
Reservoir Volume:	1-1/8 quarts
Warranty:	5 year limited warranty

Accessories:

Catalog Number:	Description:
BP10PADKIT:	Extended leg pad stabilizers (includes hardware)

See Hydraulic Hoses; Pump Accessories for Hose options

GP10

Gas Driven Hydraulic Pump; 10,000 PSI Heavy Duty 4 Horse Power gasoline engine

- Sturdy steel roll cage design
- Manual control valve
- Fast hose assembly; quick disconnect hydraulic coupler
- Large 8 quart reservoir

For Use With:

Catalog Number GP10:

10,000 PSI; 4 HP engine, 4 cycle

Used with: Y34BH, Y35BH, Y35BH4, Y750BHXT, Y750CBHXT, Y39BH, Y45, Y46C, Y46, Y60BHU, Y60BHUI, Y60LW, Y644MBH, Y4PC834MBH, Y81KFTMBH, RHCC Series Cutters



Specifications:

Engine:	4 H.P.; 4 Cycle
Weight:	77.8 lbs (overall dry weight)
Size:	21.00" x 22.25" x 16.00"
Reservoir Volume:	8 quarts
Warranty:	5 year limited warranty

Examples of some of the remote crimping and cutting heads for use with GP10 pump

Accessories:

See Hydraulic Hoses; Pump Accessories for Hose options



Y60LW



Y750BHXT



Y644MBH

Hydraulic Hoses

10,000 PSI Non Conductive Hoses

- 3 lengths available in 2 diameters
- Orange
- Stackable couplers (male/female)

Variations:

Catalog Number:	Description:
PT2990010	10' length; 3/16" diameter
PT2990015	15' length; 3/16" diameter
PT2990025	25' length; 3/16" diameter
PT2990110	10' length; 1/4" diameter
PT2990115	15' length; 1/4" diameter
PT2990125	25' length; 1/4" diameter

Notes:

For proper care and maintenance of hydraulic hoses, consult the **Hydraulic Hose Care Manual; Form #7828**.

1/4" diameter (available for 10,000 PSI only) hose provides a higher flow rate for faster ram movement.



6,000 PSI Non Conductive Hoses

- 3 lengths available
- Orange
- Stackable couplers (male/female)

Variations:

Catalog Number:	Description:
PT2990210	10' length; 3/16" diameter
PT2990215	15' length; 3/16" diameter
PT2990225	25' length; 3/16" diameter

Hydraulic Hoses

10,000 PSI Conductive Hose

- Stackable couplers (male/female)
- Steel braided with steel spring reinforced ends
- Black

Variations:

Catalog Number: PT91
Description: 8' length; steel braided with steel spring reinforced ends; stackable couplers (male/female); Black. No electrical rating.
DO NOT USE ON ENERGIZED CONDUCTOR

Notes:

For proper care and maintenance of hydraulic hoses, consult the **Hydraulic Hose Care Manual; Form #7828**.



8,800 PSI Conductive Hose

- Stackable couplers (male/female)
- Steel braided with steel spring reinforced ends
- Black

Variations:

Catalog Number: PT76
Description: 8' length; steel braided with steel spring reinforced ends; stackable couplers (male/female); Black. No electrical rating.
DO NOT USE ON ENERGIZED CONDUCTOR

Accessories



PT290741 Insulated Hose Carrying Bag

- Designed for protection and cleanliness for non conductive hoses; maximum carrying capacity of 10 lbs.
- Accommodates 100 feet of non-conductive hose coiled to 17-1/2" OD and 3-3/4" wide



ALFLUID™ Hydraulic Fluid for Pumps

- ALFLUIDQT is quart size; ALFLUIDGAL is gallon size
- All weather hydraulic fluid for BURNDY® pumps types HP hand pump, FP foot pump, GP gasoline pump, and EPP electric pump



PT93 (Male) and PT94 (Female)

- Replacement couplers for 10,000 PSI operating pressure (sold separately)



PT11018 In-Line Pressure Gauge for 10,000 PSI Hydraulic Pumps

- Pressure gauge for 10,000 PSI operating hydraulic pumps



PT29091 (Male) and PT292141 (Female)

- Replacement couplers for 6,000 PSI operating pressure (sold separately)

MD6/MD7 Related



MD6CP1 Protective Jaw Covers

- Laminated vinyl jaw covers, supplied as set
- Compact, snap in place easily
- Fits all styles except Snub-Nose variations



PT4925 Canvas Bag

- Sturdy canvas bag for MD6/MD7 tool variations with or without covers in place
- Holds up to 9 die sets (sold separately)



PT6744 Jaw Cover (Snub-Nose)

- Semi-rigid Neoprene non-conductive material
- Fits all MD66 Snub-nose variations



PT49521 Steel Carrying Case

- Provides storage for the following: MD6, MD66, MD68, MD614, MD637, MD638, MD7, and MD76 with or without covers (sold separately)
- Holds up to 18 die sets (sold separately)



PT49311 Die Button Repair Kit

- Replacement die button kit for MD6/MD7 tool variations



PT6733 Hotstick Tool Carrying Bag

- Heavy-duty, adjustable canvas bag
- Accommodates 48", 60" and 72" variations of the MD6 and Y35 Hotstick tools

Accessories



PT6545 Die Case for S or P Style Die Sets

- Metal carrying case
- Accommodates 8 S or P Style Die Sets typically used with the Y45 and Y46 series of tools



PT29291 Carry Case for U Dies

- Steel case design for storage and protection of U dies
- Accommodates 15 die sets (standard or wide width U dies)
- Case is 9-1/2" x 6" x 1-1/2"
- Die sets sold separately



HYFLUID™ Hydraulic Fluid for HYPRESS™ Hand Tools

- HYFLUIDQT - quart size; HYFLUIDGAL - gallon size
- Hydraulic fluid for HYPRESS™ hand tools types Y35, Y352, Y39, Y750HSXT, and Y750CHSXT

Y35/Y39REPKITA Seal Repair Kit

- Seal repair kit for Y35 or Y39 tools

Steel Carrying Cases for Y35 & Y352

- PT2972 - steel carrying case for Y35 tool
- PT29360 - steel carrying case for Y352 tool



PT294021

**Adjustable Head Grip for Hot Stick
PT294021 for Y35 and Y750 remote
tools PT10128 for Y46**

- Adjustable head grip for joining HYPRESS™ heads to universal hot sticks

FORCEGAUGE1215

Force Test Gauge for 12 & 15 ton tools

Use with PAT46*, PAT750, Y750 and Y35

- Custom U die blanks with detent
- Accommodates 12 ton or 15 ton tools
- Comes with custom polymer-based carry case to protect blanks and gauge

* PUADP1 adaptor required with PAT46 tool



FORCEGAUGE1215 with die blanks (included)



*FORCEGAUGE1215 in case
(all items included)*

Gauge Specifications:

Weight: 2.7 lbs (4.5 lbs for entire kit)
Size: 8.30" x 4.30" x 1.50"
Warranty: 1 year limited warranty

PT292792 Force Test Gauge for Y39

- For Y39 HYPRESS™ tools
- Not recommended for remote powered heads
- Easy to read dial; includes operating and maintenance manual and test dies



Gauge Specifications:

Weight: 2.7 lbs
Size: 9.25" x 3.88" x 2.00"
Warranty: 1 year limited warranty

WIREMIKE™

Stainless Steel Wire Micrometer

Available in a variety of formats

- Strong, durable, high quality
- Most formats:
 - Allows for use as both caliper and ruler
 - Measures I.D. and O.D. of tubing
 - Measures thin-wall and rigid conduit including IPS
 - Measures ACSR, stranded and solid commercial cables

Catalog # WIREMIKE, WIREMIKED and RK1942 are for use on:

ACSR

#6 to 336.4 (26/7) Stranded

Stranded AWG

#18 to 2000 kcmil

Solid

#20 to 4/0 AWG

IPS Tubing (Cu/Al) and Rigid Conduit:

1/4" to 2-1/2"

Tubing Sizes:

3-1/8" inside maximum; 2-15/16" outside maximum

Thin-wall Conduit:

3/8" to 2-1/2"

Catalog # WIREMIKECI is for use on:

Compression Connectors and Splices (including Compression Grounding)

- #18 to 2500 kcmil Copper Class B
- #10 to 4/0 Solid Aluminum / Copper
- #18 to 3500 kcmil Concentric Aluminum
- #8 to 1100 kcmil Compact Aluminum
- #14 to 1111 kcmil Copper DLO

Also used for reference only* for inspection of completed crimp when using Butting Copper or Aluminum Dies with the 750, 46, 35, or 39 series of tools.

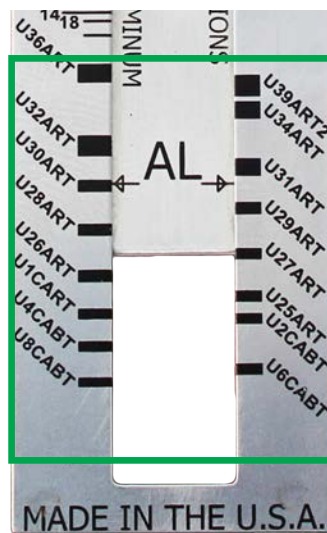
- Copper Dies U8CRT to U44XRT
- Aluminum Dies U8CABT to U39ART-2



WIREMIKE

Variations:

Catalog Number:	Description:
WIREMIKE	Stainless Steel, inch/fraction markings
WIREMIKECI	Stainless Steel, no ruler capabilities but may be used for reference on specific completed crimps (see more detail to left for WIREMIKECI)
WIREMIKED	Stainless Steel, decimal markings in place of fraction markings, same capabilities as catalog # WIREMIKE™
RK1942	Convenience packaging of WIREMIKE™ (with inch markings) in packaging suitable for hanging on a rack; sold in multiples of 10 only



Close up for the Die Inspection Section (Used for Reference Only) Catalog # WIREMIKECI only*

*WIREMIKECI tool is to provide measurements for reference only, not to confirm the suitability of connection. Customer is responsible to independently verify suitability of connection.

BTW Series

Micro-Adjustable Professional Grade Hand-operated "Click-Type" Torque Wrenches

- Ratcheting, calibrated, dual direction
- Positive lock with spring-loaded pull-down lock ring
- Individually serialized with matching certificate of calibration traceable to N.I.S.T.
- ASME B107.14M-1994 and ISO 6789

For Use On:

Any mechanical connection with torque values within range of specific torque wrench. Including, but not limited to:

Types: SERVIT®, OKLIP™, VERSITAP™, SCRULUG™, Lay-In QIKLUG™, VARITAP™, VARILUG™, KA-U Universal Terminals, UNITAP™, POLYTAP™, BARTAP™, Type BIPC, Terminal Blocks, U-BLOK™, SPEC-BLOK™, VERSIPOLE™

Variations:

Catalog Number:	Description:
BTW30150	Torque range 30 - 150 in-lbs; 10.25" long; 3/8" drive
BTW150750	Torque range 150 - 750 in-lbs; 16.00" long; 3/8" drive
BTW1575F12	Torque range 15 - 75 ft-lbs; 16.00" long; 1/2" drive



Specifications:

Accuracy:	±4% clockwise; ±6% counter clockwise of indicated value clockwise, from 20% to 100% of full scale
Applicable Standards:	ASME B107.14M-1994; ISO 6789
Calibration:	Traceable to N.I.S.T.
Warranty:	1 year limited warranty



WEJTAP™ Tooling



WTB

- WEJTAP™ patented tool body
- One piece assembly
- Installs WEJTAP™ and STIRRUP™ connectors #8 AWG - 1590 kcmil ACSR with applicable tool head



WTHY1S

- WEJTAP™ tool head
- Installs medium and large (yellow coded) connectors



WTHRBY1S

- WEJTAP™ tool head
- Installs small and medium (red/blue coded) connectors

Accessories



WTBASY

- WEJTAP™ ram replacement assembly

WEJTAP™ Boosters



- The WEJTAP™ System requires use of boosters for installation of connectors (red, blue, and yellow boosters match connectors)
- Boosters are available packaged with connectors and also sold separately

Red: WPBRNBOX25
Blue: WPBBNBOX25

Yellow: WPBYNBOX25

WTOCBR and WTOCY



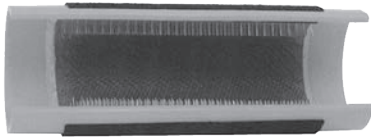
- WEJTAP™ removal clip for red/blue connectors (**WTOCBR**) with WTHRBY1S tool head
- WEJTAP™ removal clip for yellow connectors (**WTOCY**) with WTHY1S tool head



WTCK

- WEJTAP™ tool cleaning/maintenance kit for use with type WTB tool body
- Comes in clear carrying bag

Accys & Kits



WHHWB

- Hand-held wire brush for cleaning surface contact areas on non-energized conductors



WTCC

- Plastic carrying case only; designed for rugged use in all weather conditions
- Accommodates WEJTAP™ installation tool, removal clips, and cleaning kit (sold separately)



WABAG

- Durable bag designed to carry installation tool(s), removal clips, cleaning kit, and hotstick accessories; Holders for power boosters located on outside of bag (all sold separately)

WEJTAP™ Kits with contents shown below

	*Non-Hotstick Power Unit	Hotstick Power Unit	Self-Firing Tool	Large Frame (Yellows)	Large Frame Take Off Clip	Small Frame (Red, Blue)	Cleaning Kit	Small Frame Take Off Clip	Molded Carrying Case	Canvas Style Tool Bag
Component	WTBNHS*	WTB	WTBGBW	WTHY1S	WTOCY	WTHRB1S	WTCK	WTOCBR	WTCC	WABAG
Kit Catalog No.										
WT2B2RBYWABAG		2		1	1	1	1	1		1
WT2BRBYWABAG		2				1	1	1		1
WTRBYK		1		1	1	1	1	1	1	
WTRBYKNHS	1			1	1	1	1	1	1	
WTYK		1		1	1		1			
WTYKNHS	1			1	1		1			
WTRBK		1				1	1	1	1	
WTRBKNHS	1					1	1	1	1	
WT2BRBYK		2		1	1	1	1	1	1	
WTY		1		1			1			
WTRB		1				1	1			
WTYWABAG		1		1	1		1			1
WTYKNHSBAG	1			1	1		1			1
WTRBWABAG		1				1	1	1		1
WTRBKNHSBAG	1					1	1	1		1
WTBGBWRBYK			1	1	1	1	1	1	1	
WTRBYWABAG		1		1	1	1	1	1		1
WTRBYKNHSBAG	1			1	1	1	1	1		1

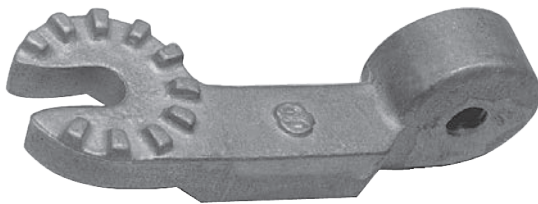
*Note: Non-hotstick power units do not contain features allowing activation with hotsticks; they are not upgradeable.

Hotstick Accys



WHSCWH

- Hotstick connector clamp holds tap connector and wedge for installation on energized lines with shotgun hotstick



WHSPBC

- Hotstick dual cable clamp to hold run and tap conductors in place during installation; for all applications #8-1272 ACSR

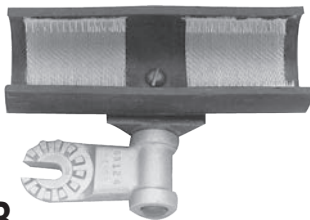


WHSWHADP

- Hotstick angle wedge holder adapter attaches wedge clamp to universal hotstick for hotline installation

WCHAWAS

- Hotstick angle wedge holder adapter attaches wedge clamp to universal hotstick for installation using shotgun stick



WHSWB

- Hotstick wirebrush attaches to universal hotstick for cleaning the contact surface of the line conductor



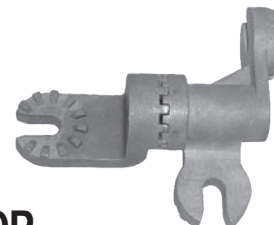
WHSGB

- Hotstick breech drive; geared shotgun hotstick adapter latches to breech end of tool without disassembly for use on energized lines



WHSTA

- Hotstick tool (actuator) hammer attaches to universal hotstick for striking the actuator button to complete installation



WHSSADP

- Hotstick spring loaded 90 degree adapter; used to attach tool to universal hotstick for hotline installations

Auger Bits

DOMINATOR Auger Bits

- Single Flute
- Hardened Steel Tip
- Aggressive lead screw
- Cuts hardest of woods with very fast drilling
- Self-feeding
- 100+ Holes



Close up of
DOMINATOR lead
screw



For Use On:

Treated Wood

		TREATED WOOD
OAL	DIA	DOMINATOR
18"	9/16"	LPHTBIT91618D
18"	5/8"	LPHTBIT5818D
18"	11/16"	LPHTBIT111618D
18"	3/4"	LPHTBIT3418D
18"	13/16"	LPHTBIT131618D
18"	15/16"	LPHTBIT151618D
24"	11/16"	LPHTBIT111624D
24"	13/16"	LPHTBIT131624D
24"	15/16"	LPHTBIT151624D



HIW716MAG Hydraulic
Impact Wrench



HIW716ENF Hydraulic
Impact Wrench

N-110

HIW716ENF

ENFORCER® Hydraulic Impact Wrench
Variable Torque; 7/16" Quick Chuck

- Industry exclusive torque selector allows switching between 200 and 515 ft-lb torque settings
- Dual spool selector for Open and Closed systems
- Cartridge style valves for greater accuracy
- Internal safety relief valve

Variations:

Catalog Number:	Description:
HIW716ENFKIT1	Wrench, eyelet
HIW716ENFKIT2	Wrench, eyelet, flat face couplers
HIW716ENFKIT3	Wrench, flat face couplers
HIW716ENFTG	Wrench, trigger guard
HIW716ENFTGKIT1	Wrench, trigger guard, flat face couplers



HIW716ENFTGKIT1 Hydraulic Impact Wrench shown with trigger guard, adaptors and couplers

See our complete line of Auger Bits



Specifications:

Chuck Type:	7/16" Quick Change
Opt. Pressure:	750-2000 PSI
Flow Range:	4-12 GPM
Opt. Flow Range:	4-8 GPM
Weight:	6.0 lbs
Torque:	515 ft-lbs
Size:	9.00" x 7.75" x 3.12"
Warranty:	5 year limited warranty

Accessories:

Catalog Number:	Description:
HIW716ENFTGKIT:	Trigger guard assembly kit
LPHTADPMMOP66:	Male to male adaptor for use with couplers listed below *(Qty. 2)
LPHTHTMANOSE66:	Male coupling 3/8" NPT *(Qty. 1) per tool Qty. 2 per hose
LPHTHTMABODY66:	Female coupling 3/8" NPT *(Qty. 1) per tool Qty. 2 per hose
LPHTHOSNCR66668:	3/8" X 8' hose set *(Qty. 1)
LPHTHOSNCR666610:	3/8" X 10' hose set *(Qty. 1)

*(Recommended quantity for use with HIW716ENF)

See Low Pressure Hydraulic Accessories for additional options

HIW716MAG

MAG Series, Hydraulic Impact Wrench Machined Aluminum, Gerotor Design

- Aircraft grade extruded aluminum body, forged handle
- CNC machined parts
- Frictionless gerotor motor
- Cartridge style valve
- 7/16" Tri-ball quick change chuck
- Dual spool selector for Open & Closed systems
- "Glove-sized" wide grip activation trigger
- Inlet/Outlet SAE 6 adapters
- Reverse flow and hook-up protection
- Injection molded thermally insulated textured comfort grips
- Forward/Reverse selector

Variations:

Catalog Number:	Description:
HIW716MAGKIT1	Wrench, flat face couplers
HIW716MAGKIT2	Wrench, swivels, 8' NCR hose, flat face couplers
HIW716MAGKIT3	Wrench, swivels, 10' NCR hose, flat face couplers
HIW716MAGKIT4	Wrench, flat face couplers, trigger guard
HIW716MAGKIT5	Wrench, flat face couplers, trigger guard, handle



Specifications:

Chuck Type:	7/16" Tri-ball quick chuck
Opt. Pressure:	1,000 - 2,000 PSI
Flow Range:	4 - 12 GPM
Opt. Flow Range:	4 - 8 GPM
Weight:	7.6 lbs
Torque:	550 ft-lbs
Size:	9.62" x 9.00" x 3.62"
Warranty:	5 year limited warranty

Accessories:

Catalog Number:	LPHTADPMM71612
	7/16" quick chuck to 1/2" square drive adapter
Catalog Number:	LPHTADPMMOP66 (2 required)
	SAE #6 to 3/8" NPT male-to-male adaptor
Catalog Number:	LPHTHTMANOSE66
	3/8" male coupler (flat face) with 3/8" NPT (female thread)
Catalog Number:	LPHTHTMABODY66
	3/8" female coupler (flat face) with 3/8" NPT (female thread)
Catalog Number:	LPHTHOSNCR66668
	3/8" X 8' hose set
Catalog Number:	LPHTHOSNCR666610
	3/8" X 10' hose set
Catalog Number:	LPHTADPSMFOP66 (2 required)
	SAE swivel adapter



MAGHOLSTER
(tool not included)

Also see our full line of Auger Bits!

See Low Pressure Hydraulic Accessories
for additional options

LPHY750XT

**KOMPRESSOR™ Remote Operated
12 Ton Low Pressure Hydraulic Compression Tool**

- Visual and audible crimp indicator
- 1.65" jaw opening covers a range of applications
- 350° head rotation
- Uses all standard BURNDY® U dies
- Crimp time approximately 2 seconds



LPHY750XT shown with couplers (sold separately)

For Use On:

Tension Sleeves

Copper	#8 sol. - 500 kcmil
Aluminum	#8 sol. - 587.2 kcmil
ACSR	#4 - 556.5 kcmil

Taps

Copper	#14 sol. - 500 kcmil
Aluminum	#8 - 500 kcmil

Aerial Cable

Copper	#6 - 500 kcmil
--------	----------------

Terminals & Splices

Copper	#8 - 750 kcmil
Aluminum	#8 - 750 kcmil
ACSR	#4 - 556.5 kcmil

HYGROUND® (Compression Grounding)

Copper	#8 - 500 kcmil
Ground Rods	1/2" - 1" diameter

Variations:

Catalog Number:	Description:
LPHY750XT	Standard KOMPRESSOR™ tool
LPHY750CXT	LPHY750XT with molded rubber covering
LPHY750K	LPHY750XT with KEARNEY head

Specifications:

Flow Rate:	3 - 9 GPM (11 - 34 LPM)
Operating Pressure:	1,500 - 2,500 PSI (103 - 172 BAR)
Force Developed:	12 Tons
Die Style:	U dies
Jaw Opening:	1.65"
Weight:	21.0 lbs (9.5 kg)
Size:	20.75" x 15.00" x 12.00"
Max. Back Pressure:	250 PSI (17 BAR)
Warranty:	5 year limited warranty

Accessories:

Catalog Number:	Description:
LPHTHOSNCR66668OP:	Direct connect 8' non-conductive hose set
LPHTHOSNCR666610OP:	Direct connect 10' non-conductive hose set
LPHTHOSNCR66668:	*8' non-conductive hose set
LPHTHOSNCR666610:	*10' non-conductive hose set
LPHTHTMANOSE66:	Male coupler 3/8" HTMA
LPHTHTMABODY66:	Female coupler 3/8" HTMA
LPHTADPSMFOP66:	Swivel Adapter

*These hoses are used with LPHTADPSMFOP66 swivel adapter

**See Low Pressure Hydraulic Accessories
for additional options**

HBR Series

Hydraulic Breakers

Light/Medium Duty (HBR40)

Medium/Heavy Duty (HBR66)

- Control trigger built into handle
- Provided with 18" braided whip hoses (couplers ordered separately)
- Standard tool attachment mechanism allows use of all standard tool bits

Variations:

Catalog Number: HBR40
Description: Light to Medium Duty Hydraulic Breaker
Performance: 45-55 lb class breakers;
Weight: 40 - 48 lbs.; Length: 25";
Tool Steel Capacity: 1" x 4-1/4"

HBR66 Medium to Heavy Duty Hydraulic Breaker
Performance: 60 - 80 lb class breakers;
Weight: 50 - 67 lbs.; Length: 27" to 35";
Tool Steel Capacity: 1-1/4" x 6"



HBR40 Light and Medium Duty Hydraulic Breaker



HBR66 Medium and Heavy Duty Hydraulic Breaker

Specifications:

Flow:	4 - 7 GPM (15 - 27 LPM)
Optimum Flow:	4 GPM (15 LPM)
Pressure:	1200 - 2000 PSI (85 - 140 BAR)
Max. Back Pressure:	150 PSI (11 BAR)
Whip Hoses:	18" with 3/8" NPT fittings
Warranty:	5 year limited warranty

Accessories:

See Low Pressure Hydraulic Accessories for options

Submersible Pumps

**Fully Submersible,
1,000-2,000 PSI Pumps**
Provided with whip hoses

- Self-lubricating design
- Totally submersible
- Can run dry without damage
- Open/Closed Center operation

Variations:

Catalog Number: Description:

HTP3 3" Submersible pump; 7-10 GPM flow; 40 lbs.; Pump capacity: 500 GPM (1900 LPM); Gear Motor; 3" Male Cam-lock; 40' maximum lift; 1/2" x 14 (#8) NPT (F)

HP2HV Submersible pump adaptable to 2" or 2-1/2" discharge; 4-9 GPM flow; 13 lbs.; Pump capacity: 340 GPM; Gerotor Motor



HTP3

Accessories:

Catalog Number: **Description:**
HOSE325: 25 ft. long hose (for HTP3)
HOSE350: 50 ft. long hose (for HTP3)

HP2CAMLOCKHOSESET: Hose Set Kit (for HP2HV)
HOSE2: 25 ft. long hose (for HP2HV)

See Low Pressure Hydraulic Accessories for additional options



HP2HV

HPT-R1 Series

Low Pressure Hydraulic Pole Tampers

Available with or without On/Off Valve

- Patented valving prevents impacting of ram within tamper
- Stroke amplitude of 1-5/8"
- Stroke frequency of 1375 blows/min
- Interchangeable heavy duty tamper shoes (sold separately)

Variations:

Catalog Number:	Description:
HPT60R1	60" length; 29 lbs; with On/Off valve
HPT72R1	72" length; 30 lbs; with On/Off valve
HPT84R1	84" length; 32 lbs; with On/Off valve
HPT96R1	96" length; 34 lbs; with On/Off valve
HPT59R1	59" length; 26 lbs; without On/Off valve
HPT71R1	71" length; 28 lbs; without On/Off valve
HPT83R1	83" length; 31 lbs; without On/Off valve



Hydraulic Tamper with On/Off Valve



TSKD
Kidney Tamper Shoe

TSSQ
Square Tamper Shoe

Hydraulic Tamper without On/Off Valve

Specifications:

Flow:	4-10 GPM (15-38 LPM)
Pressure:	1000-2000 PSI (70-140 BAR)
Max. Back Pressure:	250 PSI (17 BAR)
Operation:	Open/Closed Center
Stroke Amplitude:	1-5/8"
Stroke Frequency:	1375 per minute
Tool Ports:	#6 SAE O-Ring (F)
Warranty:	5 year limited warranty

Accessories:

Catalog Number:	Description:
TSKD:	Kidney shoe; 3" x 8" (7.6 cm x 20.3 cm)
TSSQ:	Square shoe; 8" x 8" (20.3 cm x 20.3 cm)
LPWHPKITD:	Whip Hose Kit

See Low Pressure Hydraulic Accessories for additional options

HHS Series

Hydraulic Hand Chain Saws Low Pressure Hydraulic Chain Saws

- Gerotor-type motor has lifetime warranty
- .325" pitch anti-kickback chain
- Dual action spool switches from open to closed center operation easily



Variations:

HHSO/CB13
Low Pressure Hydraulic Hand Chain Saw

Catalog Number:	Description:
HHSO/CB13	13" cutting capacity; 15-1/2" bar length; 7.5 lbs; 24" overall length
HHSO/CB16	16" cutting capacity; 18-1/2" bar length; 8.0 lbs; 27" overall length
HHSO/CB20	20" cutting capacity; 22-1/2" bar length; 8.5 lbs; 30" overall length

Specifications:

Flow:	5-8 GPM (19-30 LPM)
Pressure:	1000-2000 PSI (70-140 BAR)
Max. Back Pressure:	250 PSI (17 BAR)
Operation:	Open/Closed Center
Motor:	Gerotor (lifetime warranty)
Chain:	.325" pitch anti-kickback
Tool Ports:	#6 SAE O-Ring (F)
Warranty:	5 year limited warranty

Accessories:

See Low Pressure Hydraulic Accessories for options

HPS-LW Series

Hydraulic Pole Saws

Light weight, low pressure hydraulic

- CNC machined Aircraft grade solid Aluminum body and handle
- Branch hook
- Cartridge style valve
- External bar oiler
- 2-stage safety trigger, anti-kickback chain and anti-slip grip
- Fiberglass tube tested at final assembly with AB Chance Hot Stick Tester Model CC403-3178 to the value specified as per OSHA 1910.269

Variations:

Catalog Number: HPS1371LW
Description: 71" overall length; 1.312" pole diameter; 13" cutting capacity; 8.0 lbs

Catalog Number: HPS1383LW
Description: 83" overall length; 1.312" pole diameter; 13" cutting capacity; 8.2 lbs

Specifications:

Flow:	4-8 GPM (16-30 LPM)
Pressure:	1000-2000 PSI (70-140 BAR)
Max. Back Pressure:	250 PSI (17 BAR)
Operation:	Open/Closed Center
Motor:	Gear
Chain:	.325" pitch anti-kickback
Tool Ports:	#6 SAE O-Ring
Warranty:	5 year limited warranty

Accessories:

*See Low Pressure Hydraulic Accessories
for additional options*



HPP Series

Hydraulic Power Pack, Low Pressure

Available for single or dual circuit

- Integral oil cooling system
- Fully shrouded fan and changeable oil filter
- Manual choke with adjustable throttle mechanism

Variations:

Catalog Number: Description:

HPP18 Output/Flow 1 @ 2000 PSI @ 1-10 GPM (138 Bar @ 0-38 LPM); 18 HP @ 3500 RPM; Variable GPM output valve

HPP182 Output/Flow 2 @ 2000 PSI @ 5 GPM or 1 @ 2000 PSI @ 10 GPM; can simultaneously operate two (2) 5 GPM tools OR 1 (1) tool at 10 GPM; 18 HP @ 3500 RPM

HPP5 Output/Flow 1 @ 1450 PSI; L: 20" x H: 18" x W: 17" 5.5 HP engine with recoil start; Dry Weight: 83 lbs; Fuel Tank Capacity: 1 gallon; Hydraulic Oil Capacity: 1.25 gallons



Specifications (HPP18 Series):

Dry Weight:	233 lbs (105.6 kg)
Size:	35.00" x 32.00" x 29.00"
Motor:	18 HP @ 3500 RPM
Warranty:	5 year limited warranty

Accessories:

See Low Pressure Hydraulic Accessories for options

Examples of some of the tools for use with the HPP series of Hydraulic Power Packs.



LPHT Accessories

Catalog Number	Description
LPHT3CHISEL11418	3" Chisel, 1-1/4", hex, 18" long
LPHTASPHALTCUT118	Asphalt cutter, 1-1/8" hex
LPHTCLAYSPADE118	Clay spade, 1-1/8" hex
LPHTGRDVR11458	Ground rod driver, 1-1/4" hex, 5/8" rod
LPHTMOILPT118	Moil point, 1" hex, 18" long
LPHTNARCHISEL11814	Narrow chisel, 1-1/8" hex, 14" long
LPHTADPMM71612	7/16" Quick chuck adaptor x 1/2" square
HIW71612TGKIT	Trigger guard for HIW716
LPHTADPMMOP66	ADP Male/Male SAE #6, 3/8 NPT (2 required per tool)
LPHT HOSES Red or Orange	
LPHTHOSNCR666610	Hose; Insulated, 10 foot; 3/8 NPT, 3/8 NPT
LPHTHOSNCR66668	Hose; Insulated, 8 foot; 3/8 NPT, 3/8 NPT
LPHTHOSNCR6668OP	Hose; Insulated, 8 foot, SAE #6, 3/8 NPT
LPHTHOSNCR666610OP	Hose; Insulated, 10 foot, SAE #6, 3/8 NPT
COUPLERS	
LPHTDRIPBODY66	Dripless body; 3/8 body, 3/8 NPT
LPHTDRIPBODY88	Dripless body; 1/2 body, 1/2 NPT
LPHTDRIPNOSE66	Dripless nose; 3/8 nose, 3/8 NPT
LPHTDRIPNOSE88	Dripless nose; 1/2 nose, 1/2 NPT
LPC38S	3/8, 3/8 NPT Flush face coupler set (body & nose)
LPC12S	3/8, 1/2 NPT Flush face coupler set (body & nose)
LPHTHTMADUSTCAPF	HTMA dust cap body
LPHTHTMADUSTCAPM	HTMA dust cap nose
SOCKETS	
LPHTSOC121	Socket - 1/2" drive x 1"
LPHTSOC121116	Socket - 1/2" drive x 11/16"
LPHTSOC12112	Socket - 1/2" drive x 1-1/2"
LPHTSOC12114	Socket - 1/2" drive x 1-1/4"
LPHTSOC12118	Socket - 1/2" drive x 1-1/8"
LPHTSOC1212	Socket - 1/2" drive x 1/2"
LPHTSOC121316	Socket - 1/2" drive x 13/16"
LPHTSOC12138	Socket - 1/2" drive x 1-3/8"
LPHTSOC121716	Socket - 1/2" drive x 1-1/16"
LPHTSOC1234	Socket - 1/2" drive x 3/4"
LPHTSOC1258	Socket - 1/2" drive x 5/8"
LPHTSOC1278	Socket - 1/2" drive x 7/8"
LPHTSOC12916	Socket - 1/2" drive x 9/16"
HIW12SOCSET	Socket set - 1/2" drive DP IMP 6 Point

NOTE:

Only the most common accessories and sizes are shown. BURNDY has over 200 accessory items for your Low Pressure Hydraulic needs; if you don't see what you are looking for call us at Customer Service: 1-800-346-4175.

Auger Bits are featured on the Auger Bit pages earlier in the catalog.





The following connectors are range taking when crimped onto code and flex conductor using the 4-POINT® Series of tools:

COPPER

Copper Conductor (Code & Compact)							
Conductor		Standard Barrel			Long Barrel		
Wire Size	Expanded Range	Terminal	Splice	# Crimps*	Terminal	Splice	# Crimps*
#8 AWG	#8 AWG	YA8CL-	YS8CL-	1	YA8C-	YS8C-	1
#6 AWG	#6 AWG	YA6CL-	YS6CL-	1	YA6C-	YS6C-	1
#4 AWG	#6 - #4 AWG	YA4CL-	YS4CL-	1	YA4C-	YS4C-	1
#2 AWG	#6 - #2 AWG	YA2CL-	YS2CL-	1	YA2C-	YS2C-	2
#1 AWG	#6 - #1 AWG	YA1CL-	YS1CL-	1	YA1C-	YS1C-	2
1/0 AWG	#6 - 1/0 AWG	YA25L-	YS25L-	1	YA25-	YS25-	2
2/0 AWG	#4 - 2/0 AWG	YA26L-	YS26L-	1	YA26-	YS26-	2
3/0 AWG	#2 - 3/0 AWG	YA27L-	YS27L-	2	YA27-	YS27-	2
4/0 AWG	#1 - 4/0 AWG	YA28L-	YS28L-	2	YA28-	YS28-	2
250 kcmil	1/0 AWG - 250 kcmil	YA29L-	YS29L-	2	YA29-	YS29-	2
300 kcmil	2/0 AWG - 300 kcmil	YA30L-	YS30L-	2	YA30-	YS30-	3
350 kcmil	3/0 AWG - 350 kcmil	YA31L-	YS31L-	2	YA31-	YS31-	3
400 kcmil	4/0 AWG - 400 kcmil	YA32L-	YS32L-	2	YA32-	YS32-	3
500 kcmil	4/0 AWG - 500 kcmil	YA34L-	YS34L-	2	YA34-	YS34-	4
600 kcmil	250 - 600 kcmil	YA36L-	YS36L-	2	YA36-	YS36-	4
700 kcmil	350 - 700 kcmil	YA38L-	YS38L-	3	YA38-	YS38-	4
750 kcmil	500 - 750 kcmil	YA39L-	YS39L-	3	YA39-	YS39-	4
800 kcmil	500 - 800 kcmil	YA40L-	YS40L-	3	YA40-	YS40-	4
1000 kcmil	750 - 1000 kcmil	YA44L-	YS44L-	3	YA44-	YS44-	4

ALUMINUM

Aluminum & Copper Conductor (Code & Compact)				
Conductor		Connector		
Wire Size	Expanded Range	Terminal	Splice	# Crimps*
#8 AWG	#8 AWG	YA8CA-	YS8CA-	1
#6 AWG	#6 AWG	YA6CA-	YS6CA-	1
#4 AWG	#6 - #4 AWG	YA4CA-	YS4CA-	1
#2 AWG	#6 - #2 AWG	YA2CA-	YS2CA-	2
#1 AWG	#6 - #1 AWG	YA1CA-	YS1CA-	2
1/0 AWG	#6 - 1/0 AWG	YA25A-	YS25A-	2
2/0 AWG	#4 - 2/0 AWG	YA26A-	YS26A-	2
3/0 AWG	#2 - 3/0 AWG	YA27A-	YS27A-	2
4/0 AWG	#1 - 4/0 AWG	YA28A-	YS28A-	2
250 kcmil	1/0 AWG - 250 kcmil	YA29A-	YS29A-	2
300 kcmil	2/0 AWG - 300 kcmil	YA30A-	YS30A-	2
350 kcmil	3/0 AWG - 350 kcmil	YA31A-	YS31A-	3
400 kcmil	4/0 AWG - 400 kcmil	YA32A-	YS32A-	4
500 kcmil	4/0 AWG - 500 kcmil	YA34A-	YS34A-	4
600 kcmil	250 - 600 kcmil	YA36A-	YS36A-	4
750 kcmil	500 - 750 kcmil	YA39A-	YS39A-	4

AYP/AYPO CONNECTORS

(Aluminum and Copper — Code & Compact)				
Wire Size	Expanded Range	Pin		# Crimps*
		Straight	Offset	
#6 AWG	#6 AWG	AYP6	—	1
#4 AWG	#4 AWG	AYP4	—	1
#2 AWG	#4 - #2 AWG	AYP2	—	1
#1 AWG	#2 - #1 AWG	AYP1	—	1
1/0 AWG	#2 - 1/0 AWG	AYP1/0	—	1
2/0 AWG	#1 - 2/0 AWG	AYP2/0	AYPO2/0	2
3/0 AWG	1/0 - 3/0 AWG	AYP3/0	AYPO3/0	2
4/0 AWG	2/0 - 4/0 AWG	AYP4/0	AYPO4/0	2
250 kcmil	3/0 - 250 kcmil	AYP250	AYPO250	2
300 kcmil	4/0 - 300 kcmil	AYP300	AYPO300	2
350 kcmil	250 - 350 kcmil	AYP350	AYPO350	2
400 kcmil	350 - 500 kcmil	AYP400	AYPO400	2
500 kcmil	350 - 500 kcmil	AYP500	AYPO500	2
600 kcmil	400 - 600 kcmil	AYP600	AYPO600	3
750 kcmil	500 - 750 kcmil	AYP750	AYPO750	3

*Same number of recommended crimps for both Standard and Expanded wire ranges

Tooling Expanded Cable Range

BURNDY®



The following connectors are range taking when crimped onto code and flex conductor using 4-POINT® Series of tools:
(continued from previous page)

Copper Conductor (Flex Only)								
Nom Flex Wire Size	Standard Barrel				Long Barrel			
	Expanded Range	Terminal	Splice	# of Crimps	Expanded Range	Terminal	Splice	# of Crimps
#8 AWG	#8 AWG	YAV8CL-	YSV8CL-	1	#8 AWG	YAV8C-	YSV8C-	1
#6 AWG	#6 AWG	YAV6CL-	YSV6CL-	1	#6 AWG	YAV6C-	YSV6C-	1
#4 AWG	#6 - #4 AWG	YAV4CL-	YSV4CL-	1	#6 - #4 AWG	YAV4C-	YSV4C-	1
#2 AWG	#6 - #2 AWG	YAV2CL-	YSV2CL-	1	#6 - #2 AWG	YAV2C-	YSV2C-	1
#1 AWG	#4 - #1 AWG	YAV1CL-	YSV1CL-	1	#4 - #1 AWG	YAV1C-	YSV1C-	1
1/0 AWG	#4 - 1/0 AWG	YAV25L-	YSV25L-	1	#4 - 1/0 AWG	YAV25-	YSV25-	2
2/0 AWG	#2 - 2/0 AWG	YAV26L-	YSV26L-	1	#4 - 2/0 AWG	YAV26-	YSV26-	2
3/0 AWG	#1 - 3/0 AWG	YAV27L-	YSV27L-	1	#2 - 3/0 AWG	YAV27-	YSV27-	2
4/0 AWG	1/0 - 4/0 AWG	YAV28L-	YSV28L-	1	#1 - 4/0 AWG	YAV28-	YSV28-	2
250 kcmil	3/0 AWG - 250 kcmil	YAV29L-	YSV29L-	1	1/0 AWG - 250 kcmil	YAV29-	YSV29-	2
300 kcmil	4/0 AWG - 313.1 kcmil	YA32L-	YS32L-	1	2/0 AWG - 313.1 kcmil	YA32-	YS32-	2
350 kcmil	262.2 - 373.7 kcmil	YA34L-	YS34L-	1	3/0 AWG - 373.7 kcmil	YA34-	YS34-	2
450 kcmil	373.7 - 444.4 kcmil	YA36L-	YS36L-	1		262.2 - 444.4 kcmil	YA36-	YS36-
450 kcmil	262.2 - 444.4 kcmil	YA36L-	YS36L-	2	373.7 - 535.3 kcmil		YA38-	YS38-
500 kcmil	444.4 - 535.3 kcmil	YA38L-	YS38L-	1		262.2 - 600 kcmil	YA39-	YS39-
500 kcmil	373.7 - 535.3 kcmil	YA38L-	YS38L-	2	444.4 - 646 kcmil		YA40-	YS40-
600 kcmil	373.7 - 600 kcmil	YA39L-	YS39L-	2		535.3 - 777.7 kcmil	YA44-	YS44-
650 kcmil	444.4 - 646 kcmil	YA40L-	YS40L-	2				
750 kcmil	535.3 - 777.7 kcmil	YA44L-	YS44L-	2				



Y81KFTMBH

E-Line Connectors							
Wire Size	Expanded Wire Range	Aluminum			Copper		
		Offset	Center formed	# Crimps*	Offset	Center formed	# Crimps*
#8 AWG	#8 AWG	YA8CA-T-E		1			
#6 AWG	#6 AWG						
#4 AWG	#6 - #4 AWG						
#2 AWG	#6 - #2 AWG	YA2CA-T-E	YAC2CA-T-E	1			
#1 AWG	#6 - #1 AWG						
1/0 AWG	#6 - 1/0 AWG	YA25A-T-E		1	YA25L-T-E	YAC25L-T-E	1
2/0 AWG	#4 - 2/0 AWG	YA26A-T-E		2	YA26L-T-E	YAC26L-T-E	1
3/0 AWG	#2 - 3/0 AWG	YA27A-T-E	YAC27A-T-E	2			
4/0 AWG	#1 - 4/0 AWG	YA28A-T-E		2			
250 kcmil	1/0 AWG - 250 kcmil						
300 kcmil	2/0 AWG - 300 kcmil	YA30A-T-E		2	YA30L-T-E	YAC30L-T-E	2
350 kcmil	3/0 AWG - 350 kcmil	YA31A-T-E	YAC31A-T-E	2			
400 kcmil	4/0 AWG - 400 kcmil	YA32A-T-E		4			
500 kcmil	4/0 AWG - 500 kcmil	YA34A-T-E		4	YA34L-T-E		2
500 kcmil	4/0 AWG - 500 kcmil				YA342L-T-E		2
600 kcmil	250 - 600 kcmil	YA36A-T-E		4	YA36L-T-E		2
600 kcmil	250 - 600 kcmil				YA362L-T-E		2
700 kcmil	350 - 700 kcmil						
750 kcmil	500 - 750 kcmil	YA39A-T-E		4	YA39L-T-E		2
750 kcmil	500 - 750 kcmil				YA392L-T-E		2
800 kcmil	500 - 800 kcmil						
1000 kcmil	750 - 1000 kcmil						

Expanded conductor ranges shown are applicable when using the 4-POINT® Series of tools only.
(Continued from previous page.)

*Same number of recommended crimps for both Standard and Expanded wire ranges



The following connectors are range taking when crimped onto code and flex conductor using Y644 Series of tools:

COPPER

Copper HYLUG™ & HYLINK™ Connectors Types YA, YA-L, YAB, YS, YS-L, YST, YS-T, YSP-T			
Catalog No.		Standard Wire Size	Expanded Wire Range
Terminal*	Splice**		
YA6C- YA5C- YA4C- YA3C- YA2C- YA1C-	YS6C- YS5C- YS4C- YS3C- YS2C- YS1C-	#6 AWG #5 AWG #4 AWG #3 AWG #2 AWG #1 AWG	#6 AWG #6 - #5 AWG #6 - #4 AWG #6 - #3 AWG #6 - #2 AWG #6 - #1 AWG
YA25- YA26- YA27- YA28-	YS25- YS26- YS27- YS28-	1/0 AWG 2/0 AWG 3/0 AWG 4/0 AWG	#6 - 1/0 AWG #4 - 2/0 AWG #2 - 3/0 AWG #1 - 4/0 AWG
YA29- YA30- YA31- YA32- YA34-	YS29- YS30- YS31- YS32- YS34-	250 kcmil 300 kcmil 350 kcmil 400 kcmil 500 kcmil	1/0 AWG - 250 kcmil 2/0 AWG - 300 kcmil 3/0 AWG - 350 kcmil 4/0 AWG - 400 kcmil 4/0 AWG - 500 kcmil
YA36- YA39- YA40-	YS36- YS39- YS40-	600 kcmil 750 kcmil 800 kcmil	250 - 600 kcmil 500 - 750 kcmil 500 - 800 kcmil
YA44-	YS44-	1000 kcmil	750 - 1000 kcmil

* 1 Crimp
** 1 Crimp per side

ALUMINUM

Aluminum HYLUG™ & HYLINK™ Connectors Types YA-A & YS-A (Copper or Aluminum Conductor)			
Catalog No.		Standard Wire Size	Expanded Wire Range
Terminal*	Splice**		
YA6CA- YA4CA- YA2CA- YA1CA-	YS6CA- YS4CA- YS2CA- YS1CA-	#6 AWG #4 AWG #2 AWG #1 AWG	#6 AWG #6 - #4 AWG #6 - #2 AWG #2 - #1 AWG
YA25A- YA26A- YA27A- YA28A-	YS25A- YS26A- YS27A- YS28A-	1/0 AWG 2/0 AWG 3/0 AWG 4/0 AWG	#1 - 1/0 AWG #1 - 2/0 AWG #1 - 3/0 AWG #1 - 4/0 AWG
YA29A- YA30A- YA31A- YA32A- YA34A-	YS29A- YS30A- YS31A- YS32A- YS34A-	250 kcmil 300 kcmil 350 kcmil 400 kcmil 500 kcmil	1/0 AWG - 250 kcmil 2/0 AWG - 300 kcmil 3/0 AWG - 350 kcmil 4/0 AWG - 400 kcmil 4/0 AWG - 500 kcmil
YA36A- YA39A-	YS36A- YS39A-	600 kcmil 750 kcmil	250 - 600 kcmil 500 - 750 kcmil

* 1 Crimp
** 1 Crimp per side

Expanded conductor ranges shown on this page are applicable when using the Y644/PAT644 Series of tools only.



Y644MBH