

PAT750

PATRIOT® 12-Ton, C-Head
 Hydraulic Self-Contained, 18V Lithium-Ion

- 1.65" jaw opening
- Used with U dies
- C-head with 355° head rotation
- Bearing/alignment guide for HYGROUND® as well as other asymmetrical connectors
- Includes 2 batteries, charger, and polymer carrying case
- **EP Enhanced Power** labeled tools accept 2.0, 3.0, 4.0, and 5.0Ah Makita batteries



For Use On:

Tension Sleeves

Copper	#8 sol. - 500 kcmil
Aluminum	#8 sol. - 587.2 kcmil
ACSR	#4 - 556.5 kcmil

Taps

Copper	#14 sol. - 500 kcmil
Aluminum	#8 - 500 kcmil

Aerial Cable

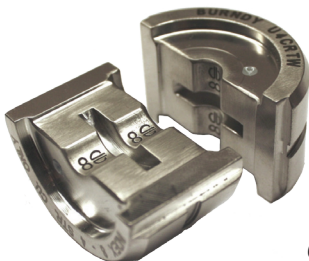
Copper	#6 - 500 kcmil
--------	----------------

Terminals & Splices

Copper	#8 - 750 kcmil
Aluminum	#8 - 750 kcmil
ACSR	#4 - 556 kcmil

HYGROUND® (Compression Grounding)

Copper	#8 - 500 kcmil
Ground Rods	1/2" - 1" diameter



Wide U-dies (sold separately) can be used with long barrel terminals and splices saving time and labor!

Specifications:

Output Force:	12 Tons
Tool Weight:	15.7 lbs
Size:	15.75" x 13.50" x 3.50"
Die Style:	U style
Jaw Opening:	1.65"
Operating Voltage:	18 V-DC Lithium-Ion
Recharge Time:	30 minutes (3.0Ah) 45 minutes (5.0Ah)
Warranty:	5 year limited warranty Lifetime warranty on INFINITY DRIVE® 3 year on batteries and charger

Accessories:

Catalog Number:	Description:
BAT18VLI:	3.0Ah Li-Ion battery
BAT18V5AHLI:	5.0Ah Li-Ion battery
PATCHGRLI:	120V-AC Charger
PATCHGRLLDC:	12/24V-DC Charger
PT208620:	Lanyard

Variations: (additional variations may be available)

Catalog Number:	Description:
PAT750LI	with 3.0Ah Li-Ion batteries
PAT750CLI	PAT750LI with rubber covered head (3.0Ah)
PAT750KLI	PAT750LI with KEARNEY™ style head (3.0Ah) used with KEARNEY™ WH1 and WH2 and BURNDY U dies with KUADP adapter (sold separately)
PAT750L5	with 5.0Ah Li-Ion batteries
PAT750CL5	PAT750L5 with rubber covered head (5.0Ah)

See Important Notes on Page N-6.